

CORRUGATED CAST-IN-PLACE SLEEVE



For use in

- Concrete floor assemblies with corrugated metal form decks.

Product Description

- HydroFlame corrugated sleeves offer a passage way for a variety of pipe sizes and types that pass through concrete floors in multi-story buildings.
- These sleeves are delivered to the job site completely assembled and need only be fastened to the corrugated metal deck for final installation.
- HydroFlame sleeves appreciably reduce job time and material expenses by not requiring core drilling or other apparatuses to form a void in the floor for the passage of different piping systems and types .

Through Penetrants

½" - 6" pipe sizes: Steel Pipe, Iron Pipe, Conduit (Steel conduit or electrical metallic tubing), Copper Tubing, PEX, Copper Pipe, PVC, CPVC, ABS etc...

Product Feature & Benefits

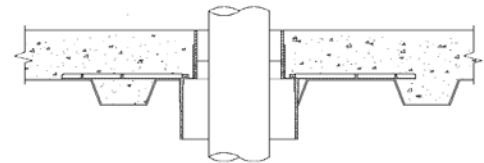
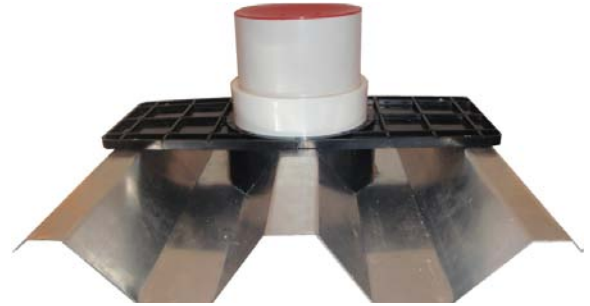
- Simple and quick installation
- Reduces time to form a void in the concrete floor for the passage of different piping systems and types
- Very rigid during concrete pours
- OSHA compliant Safety Cap included

Not for use in

- Walls

Storage of Device

- Store in factory boxes and desired location on jobsite or other preferred area



Corrugated Floor, Pass Through Sleeve, Detail



Installation Instructions

- Lay out the corrugated deck for the appropriate corrugated deck device, cut the hole in the corrugated deck to the outside dimension of the bottom extension portion of the device.
- Select the correct sleeve for pipe size and concrete thickness. Align the hatch marks on lower base to layout lines on corrugated deck to center the sleeve for the pipe that will penetrate through. Attach sleeve to deck with sheet metal screws using the holes provided in the lower base. Make sure the protective cap is securely inserted in the sleeve top before pouring concrete.
- Pour the concrete slab around the device to the appropriate slab thickness.
- Remove the protective cap from the top portion of the device after concrete has cured before inserting pipe.
- Insert your pipe of choice through the bottom or top of device.
- Note: Holdrite HydroFlame is not responsible for sleeve performance when installation instructions are not followed.
- Note: Fire Protection by Others for nonmetallic pipe, refer to UL System No. F-A-1123 & F-A-5044 for metallic pipe types & sizes through corrugated metal decks for UL ratings.

Product Submittal		
Job Name:		Architect/Owner:
Date:		Contractor:
Part#:	Qty:	Notes:

spec_HFCS_RevC