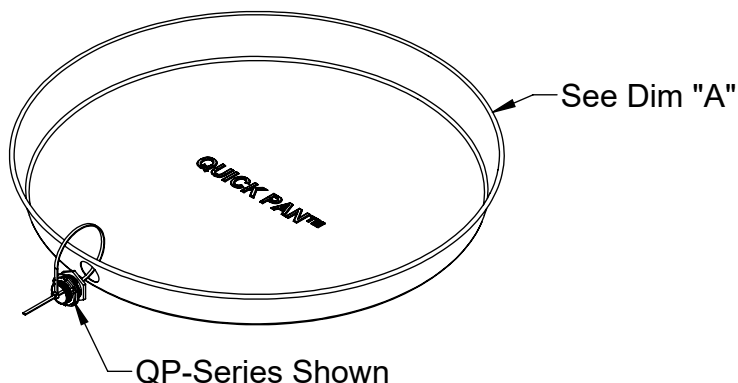
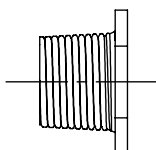


PRODUCT SPECIFICATION DRAWING

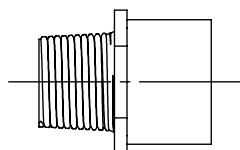
HOLDRITE® QUICK PAN™ Series



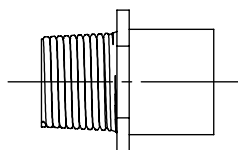
Pan Chart	
Size	Dim "A"
20"	Ø21.75
22"	Ø23.75
24"	Ø25.75
26"	Ø27.75
28"	Ø29.75
30"	Ø31.75



QP-Series
PVC (Thin Profile)



QP-C Series
CPVC



QP-L Series
PVC

The **HOLDRITE® QUICK PAN™** provides a quick simple solution when a drain pan is required under a water heater. These pans are suitable for both electric and gas water heaters. Available in five sizes (20" - 30"). Model #QP-20 (20"), #QP-22 (22"), #QP-24 (24"), #QP-26 (26") and #QP-28 (28") and #QP-30 (30"). Pan depth is 2-1/2".

Product Information:

- Material:
 - Pan: Aluminum Alloy, .0255 thick
 - Drain Body Adapter Configuraton:
 - QP-Series: PVC, 1" MIPT x 3/4" IPS Hub (Thin Profile)
 - QP-C Series: CPVC, 1" x 1" IPS Hub
 - QP-L Series: PVC, 1" MIPT x 1" IPS Hub
- Lock Nut: Steel, zinc plated
- Flange Gasket: Neoprene, 50 ± .05 Shore A

THIS INFORMATION IS PROPRIETARY TO HOLDRITE AND IS SUBJECT TO CHANGE WITHOUT NOTICE. IT MAY NOT BE REPRODUCED IN PART OR WHOLE WITHOUT WRITTEN AUTHORIZATION.



Product Submittal	
Job Name:	
Date:	
Part Number:	Qty:
Architect / Owner:	
Contractor:	
Notes:	