

XHEZ.C-AJ-5425 - THROUGH-PENETRATION FIRESTOP SYSTEMS

Design/System/Construction/Assembly Usage Disclaimer

- Authorities Having Jurisdiction should be consulted in all cases as to the particular requirements covering the installation and use of UL Certified products, equipment, system, devices, and materials.
- Authorities Having Jurisdiction should be consulted before construction.
- Fire resistance assemblies and products are developed by the design submitter and have been investigated by UL for compliance with applicable requirements. The published information cannot always address every construction nuance encountered in the field.
- When field issues arise, it is recommended the first contact for assistance be the technical service staff provided by the product manufacturer noted for the design. Users of fire resistance assemblies are advised to consult the general Guide Information for each product category and each group of assemblies. The Guide Information includes specifics concerning alternate materials and alternate methods of construction.
- Only products which bear UL's Mark are considered Certified.

XHEZ - Through-penetration Firestop Systems XHEZ7 - Through-penetration Firestop Systems Certified for Canada

See General Information for Through-penetration Firestop Systems

See General Information for Through-penetration Firestop Systems Certified for Canada

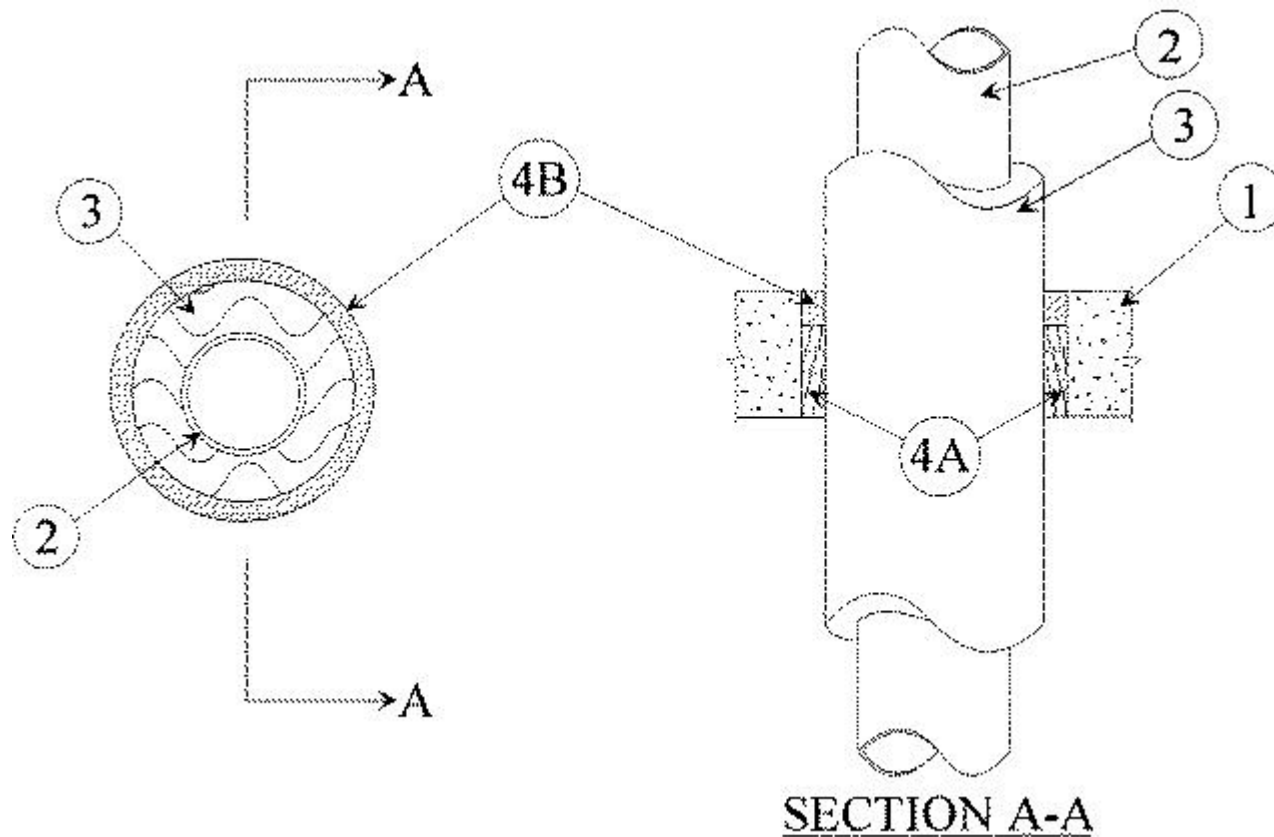
System No. C-AJ-5425

June 20, 2019

ANSI/UL1479 (ASTM E814)

CAN/ULC S115

F Rating - 2 Hr	F Rating - 2 Hr
	FH Rating - 2 Hr
T Ratings - 1 & 1-1/2 Hr (SEE ITEM 4)	FT Ratings - 1 & 1-1/2 Hr (SEE ITEM 4)
	FTH Ratings - 1 & 1-1/2 Hr (SEE ITEM 4)



1. **Floor or Wall Assembly** — Reinforced lightweight or normal weight (100-150 pcf) (1600-2400 kg/m³) concrete floor having a min thickness as specified in the table below (Item 4). Wall may also be constructed of any UL Classified **Concrete Blocks***. Floor may also be constructed of any min 6 in. (152 mm) thick UL Classified hollow-core **Precast Concrete Units***. Max diam of opening in solid lightweight or normal weight concrete floor or wall is 16 in. (406 mm). Max diam of opening in hollow-core precast concrete unit floor is 7 in. (178 mm).

See **Concrete Blocks** (CAZT) and Precast Concrete Units (CFTV) categories in the Fire Resistance Directory for names of manufacturers.

2. **Through Penetrants** — One metallic pipe or tubing to be installed either concentrically or eccentrically within the firestop system. Pipe or tubing to be rigidly supported on both sides of floor or wall assembly. The following types and sizes of metallic pipes or tubing may be used:

A. **Steel Pipe** — Nom 10 in. (254 mm) diam (or smaller) Schedule 10 (or heavier) steel pipe.

B. **Iron Pipe** — Nom 10 in. (254 mm) diam (or smaller) cast on ductile iron pipe.

C. **Copper Tube** — Nom 4 in. (102 mm) diam (or smaller) Type 6 (or heavier) copper tube.

D. **Copper Pipe** — Nom 4 in. (102 mm) diam (or smaller) Regular (or heavier) copper pipe.

3. **Pipe Covering*** — Nom 2 in. (51 mm) thick hollow cylindrical heavy density (min 3.5 pcf) (56 kg/m³) glass fiber units jacketed on the outside with an all service jacket. Longitudinal joints sealed with metal fasteners or factory-applied self-sealing lap tape. Transverse joints secured with metal fasteners or with butt tape supplied with the

product. The annular space shall be as specified in the table below (Item 4).

See **Pipe and Equipment Covering — Materials** (BRGU) category in the Building Materials Directory for names of manufacturers. Any pipe covering material meeting the above specifications and bearing the UL Classification Marking with a Flame Spread Index of 25 or less and a Smoke Developed Index of 50 or less may be used.

4. **Firestop System** — The T Ratings of the system are dependent upon the type of assemblies being penetrated, thickness of assembly, annular space, forming material thickness and fill material thickness as shown in the table below:

Floor or Wall	Min Floor or Wall Thkns In.	Annular Space In.	Min Forming Mtl Thkns In.	Min Fill Mtl Thkns In.	T Rating Hr
F	4-1/2 (114 mm)	1/2 to 3/4 (13 to 19 mm)	3-1/2 (89 mm)	1 (25 mm)	1-1/2
W	5-1/2 (140 mm)	1/2 to 3/4 (13 to 19 mm)	3-1/2 (89 mm)	1 (25 mm)	1-1/2
F	4-1/2 (114 mm)	5/8 to 7/8 (16 to 22 mm)	0	1-1/2 (38 mm)	1
W	4-1/2 (114 mm)	5/8 to 7/8 (16 to 22 mm)	0	1-1/2 (38 mm)	1

A. **Packing Material** — Min 4.0 pcf (64 kg/m³) mineral wool batt insulation firmly packed into opening as a permanent form. Packing material to be recessed from top surface of solid concrete floor or from both surfaces of wall or hollow-core floor as required to accommodate the required thickness of fill material.

B. **Fill, Void or Cavity Material* — Caulk** — Min thickness of fill material applied within the annulus, flush with top surface of solid concrete floor or with both surfaces of wall or hollow-core floor.

RELIANCE WORLDWIDE CORPORATION DBA HOLDRITE HYDROFLAME — HydroFlame 200

*** Indicates such products shall bear the UL or cUL Certification Mark for jurisdictions employing the UL or cUL Certification (such as Canada), respectively.**

Last Updated on 2019-06-20

The appearance of a company's name or product in this database does not in itself assure that products so identified have been manufactured under UL's Follow-Up Service. Only those products bearing the UL Mark should be considered to be Certified and covered under UL's Follow-Up Service. Always look for the Mark on the product.

UL permits the reproduction of the material contained in the Online Certification Directory subject to the following conditions: 1. The Guide Information, Assemblies, Constructions, Designs, Systems, and/or Certifications (files) must be presented in their entirety and in a non-misleading manner, without any manipulation of the data (or drawings). 2. The statement "Reprinted from the Online Certifications Directory with permission from UL" must appear adjacent to the extracted material. In addition, the reprinted material must include a copyright notice in the following format: "© 2019 UL LLC"