

# XHEZ.C-AJ-5428 - THROUGH-PENETRATION FIRESTOP SYSTEMS

Design/System/Construction/Assembly Usage Disclaimer

- Authorities Having Jurisdiction should be consulted in all cases as to the particular requirements covering the installation and use of UL Certified products, equipment, system, devices, and materials.
- Authorities Having Jurisdiction should be consulted before construction.
- Fire resistance assemblies and products are developed by the design submitter and have been investigated by UL for compliance with applicable requirements. The published information cannot always address every construction nuance encountered in the field.
- When field issues arise, it is recommended the first contact for assistance be the technical service staff provided by the product manufacturer noted for the design. Users of fire resistance assemblies are advised to consult the general Guide Information for each product category and each group of assemblies. The Guide Information includes specifics concerning alternate materials and alternate methods of construction.
- Only products which bear UL's Mark are considered Certified.

## XHEZ - Through-penetration Firestop Systems XHEZ7 - Through-penetration Firestop Systems Certified for Canada

See General Information for Through-penetration Firestop Systems

See General Information for Through-penetration Firestop Systems Certified for Canada

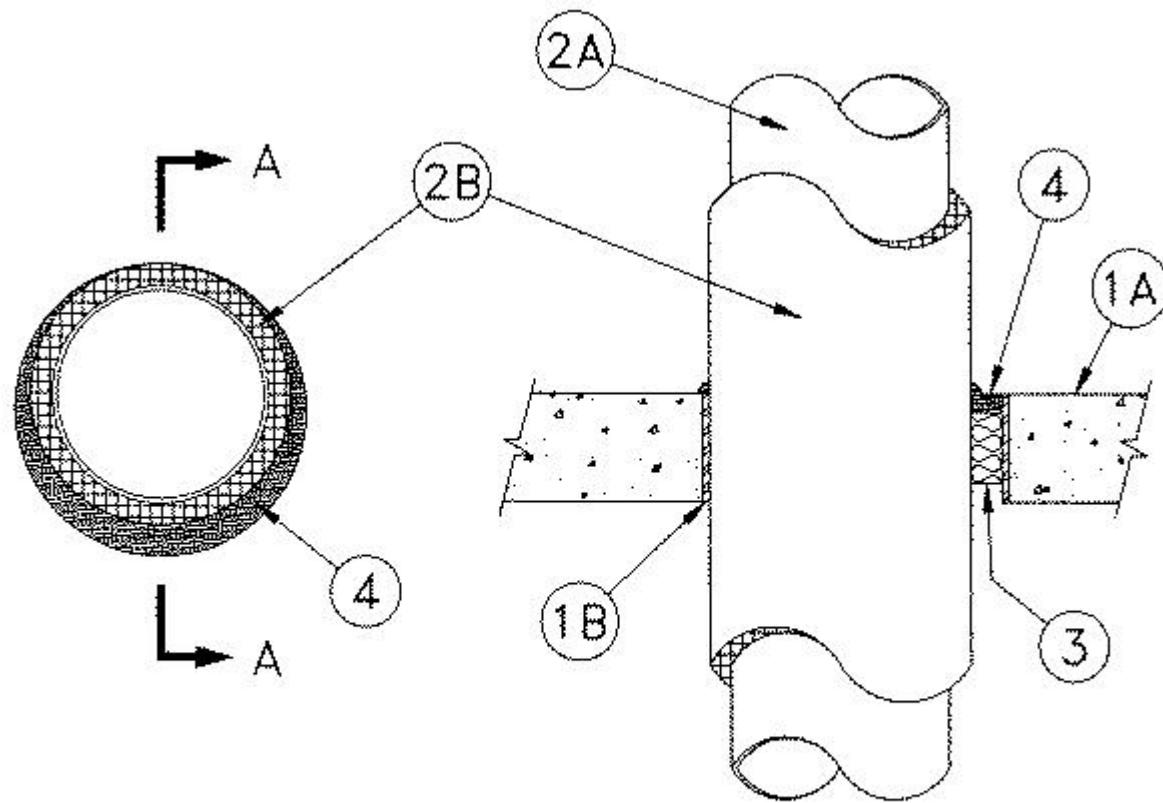
### System No. C-AJ-5428

June 20, 2019

**ANSI/UL1479**

**CAN/ULC S115**

F Rating — 3 Hr	F Rating — 3 Hr
T Rating — 3/4 Hr	FT Rating — 3/4 Hr
	FH Rating — 3 Hr
	FTH Rating — 3/4 Hr



SECTION 'A-A'

**1A. Floor or Wall Assembly** — Min 4-1/2 in. (114 mm) thick reinforced normal weight (150 pcf) (2400 kg/m<sup>3</sup>) concrete. Wall may also be constructed of any UL classified **Concrete Blocks\***. Max diam of opening is 18 in. (457 mm).

See **Concrete Blocks** (CAZT) category in the Fire Resistance Directory for names of manufacturers.

**1B. Metallic Sleeve (Optional)** — Nom 18 in. (457 mm) (or smaller) Schedule 10 (or heavier) steel pipe sleeve, cast or grouted into floor or wall assembly.

**2A. Through Penetrants** — One nom 10 in. (254 mm) (or smaller) Schedule 40 (or heavier) steel or iron pipe. Pipe to be firmly supported on both sides of opening. Pipe installed concentrically or eccentrically such that the annular space between the insulated pipe and the periphery of the opening is min 0 in. (point of contact) to max 4-1/4 in. (114 mm).

**2B. Pipe Covering Material\*** — Cellular Glass Insulation — Nom 1 in. (25 mm) thick cellular glass units sized to the outside diam of the metallic pipe and supplied in 18 or 24 in. (457 or 610 mm) long, half sections. Pipe insulation installed on pipe in accordance with manufacturer's instructions. The insulation material may be jacketed with 0.010 in. (.25 mm) thick aluminum sheet wrapped tightly around with a min 2 in. (51 mm) overlap. Jacket to be installed with edge abutting surface of caulk fill material (Item 4) on top surface of floor or both surfaces of wall. Jacket to be well secured with metallic bands.

3. **Packing Material** — Mineral wool insulation of min 4 pcf (64 kg/m<sup>3</sup>) density and min 2 in. (51 mm) thickness, compressed 33%, and installed into the opening as a permanent form. Insulation to be recessed by a min depth of 1 in. (25 mm) from top surface of floor or both surfaces of wall.

4. **Fill, Void, or Cavity Materials\*** — Caulk. Installed to fill annular space to a min depth of 1 in. (25 mm) over mineral wool insulation and made flush with top surface of floor or both surfaces of wall. Additional material to be installed to form a 1/4 in. (6 mm) crown around the circumference of the insulated pipe at the point of contact with the periphery of opening.

**RELIANCE WORLDWIDE CORPORATION DBA HOLDRITE HYDROFLAME** — HydroFlame 100

**\* Indicates such products shall bear the UL or cUL Certification Mark for jurisdictions employing the UL or cUL Certification (such as Canada), respectively.**

Last Updated on 2019-06-20

---

The appearance of a company's name or product in this database does not in itself assure that products so identified have been manufactured under UL's Follow-Up Service. Only those products bearing the UL Mark should be considered to be Certified and covered under UL's Follow-Up Service. Always look for the Mark on the product.

UL permits the reproduction of the material contained in the Online Certification Directory subject to the following conditions: 1. The Guide Information, Assemblies, Constructions, Designs, Systems, and/or Certifications (files) must be presented in their entirety and in a non-misleading manner, without any manipulation of the data (or drawings). 2. The statement "Reprinted from the Online Certifications Directory with permission from UL" must appear adjacent to the extracted material. In addition, the reprinted material must include a copyright notice in the following format: "© 2019 UL LLC"