

XHEZ.C-AJ-7224 - Through-penetration Firestop Systems

Design/System/Construction/Assembly Usage Disclaimer

- Authorities Having Jurisdiction should be consulted in all cases as to the particular requirements covering the installation and use of UL Certified products, equipment, system, devices, and materials.
- Authorities Having Jurisdiction should be consulted before construction.
- Fire resistance assemblies and products are developed by the design submitter and have been investigated by UL for compliance with applicable requirements. The published information cannot always address every construction nuance encountered in the field.
- When field issues arise, it is recommended the first contact for assistance be the technical service staff provided by the product manufacturer noted for the design. Users of fire resistance assemblies are advised to consult the general Guide Information for each product category and each group of assemblies. The Guide Information includes specifics concerning alternate materials and alternate methods of construction.
- Only products which bear UL's Mark are considered Certified.

XHEZ - Through-penetration Firestop Systems

XHEZ7 - Through-penetration Firestop Systems Certified for Canada

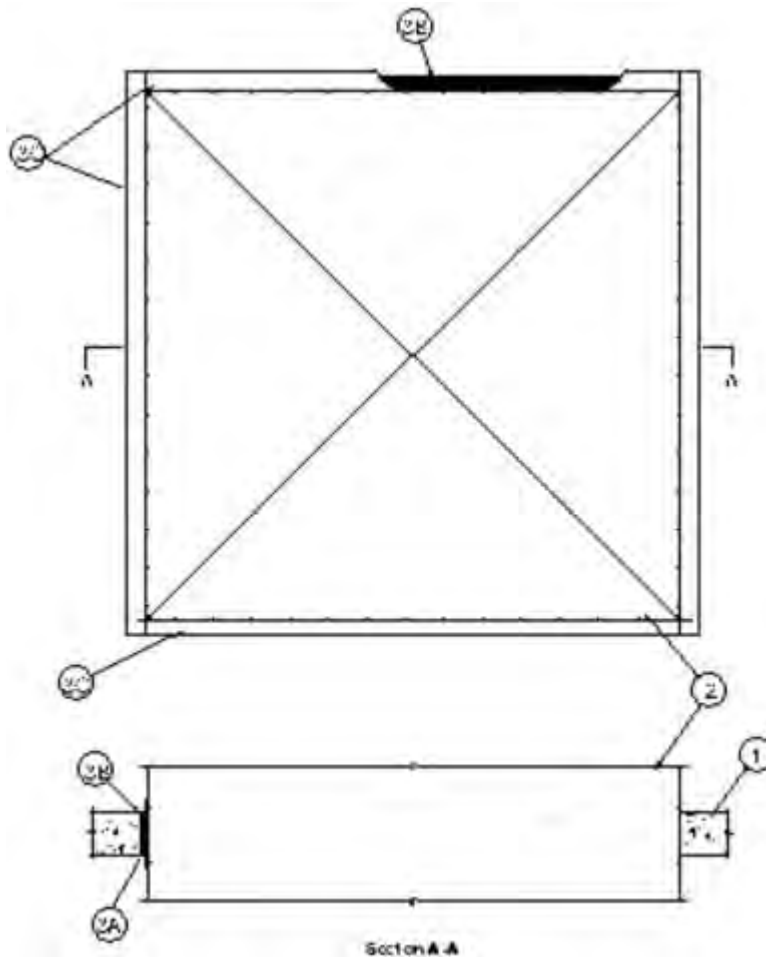
See General Information for Through-penetration Firestop Systems

See General Information for Through-penetration Firestop Systems Certified for Canada

System No. C-AJ-7224

January 10, 2020

| ANSI/UL1479 (ASTM E814) | CAN/ULC S115 |
|-------------------------|------------------|
| F Rating - 2 Hr | F Rating -2 Hr |
| | FH Rating -2 Hr |
| T Rating - 0 Hr | FT Rating - 0 Hr |
| | FTH Rating -0 Hr |



1. **Floor or Wall Assembly** — Min 6 in. (152 mm) thick reinforced lightweight or normal weight (100-150 pcf or 1600-2400 kg/m³) concrete. Wall may also be constructed of any UL Classified **Concrete Blocks***. Max size of opening is 73.7 sq ft (6.8 m²) with a max width of 104 in. (264 cm).

See **Concrete Blocks** (CAZT) category in Fire Resistance Directory for names of manufacturers

2. **Steel Duct** — Max 100 in. by 100 in. (2.54 m by 2.54 m) by No. 18 gauge (or heavier) galv steel duct to be installed either concentrically or eccentrically within the firestop system. The duct shall be reinforced in accordance with SMACNA construction standards. The space between the steel duct and periphery of opening shall be min 0 in. (point contact) to max 2 in. (51 mm). Steel duct to be rigidly supported on both sides of the floor or wall assembly.

3. **Firestop System** — The firestop system shall consist of the following:

A. **Packing Material** — Min 4-3/4 in. (121 mm) thickness of min 4 pcf (64 kg/m³) mineral wool batt insulation firmly packed into opening as a permanent form. Packing material to be recessed from top surface of floor or both surfaces of wall to accommodate the required thickness of fill material.

B. **Fill, Void or Cavity Material* — Sealant** — Min 1 in. (25 mm) thickness of fill material applied within annulus flush with top surface of floor, or min 5/8 in. (16 mm) thickness of fill material applied within annulus flush with both surfaces of wall. Min 1/2 in. (13 mm) diam bead of fill material shall be applied at the point contact locations between duct and opening at top surface of floor or both surfaces of wall.

RELIANCE WORLDWIDE CORPORATION DBA HOLDRITE HYDROFLAME — HydroFlame 300 SL, HydroFlame 300 CG (in floors only)

C. **Steel Retaining Angles** — Min No. 10 gauge (0.125 in. or 3 mm) thick galv steel angles sized to lap steel duct a min of 2 in. (51 mm) and lap floor or wall surfaces a min of 2 in. (51 mm). Angles attached to steel duct on both sides of floor or wall with min No. 10 steel sheet metal screws spaced a max of 1 in. (25 mm) from each end of steel duct and spaced a max of 4 in. (102 mm) OC.

*** Indicates such products shall bear the UL or cUL Certification Mark for jurisdictions employing the UL or cUL Certification (such as Canada), respectively.**

Last Updated on 2020-01-10

The appearance of a company's name or product in this database does not in itself assure that products so identified have been manufactured under UL's Follow-Up Service. Only those products bearing the UL Mark should be considered to be Certified and covered under UL's Follow-Up Service. Always look for the Mark on the product.

UL permits the reproduction of the material contained in the Online Certification Directory subject to the following conditions: 1. The Guide Information, Assemblies, Constructions, Designs, Systems, and/or Certifications (files) must be presented in their entirety and in a non-misleading manner, without any manipulation of the data (or drawings). 2. The statement "Reprinted from the Online Certifications Directory with permission from UL" must appear adjacent to the extracted material. In addition, the reprinted material must include a copyright notice in the following format: "© 2020 UL LLC"