



HoldRite™ HydroFlame™

Transforming Firestop
Solutions



Transforming Firestop Solutions

- **Cast-in-place Sleeves**
Job site flexibility to eliminate cut sleeves
- **Locator Whiskers**
Locate buried sleeves after concrete pour
- **Faster Install**
Up to 6 times faster to install than makeshift methods
- **Easy to Stock**
Available at a distributor near you
- **UL Listed Firestop Device**
Meets and exceeds building code requirements



FBC™ System Compatible indicates that this products has been tested, and is monitored on an ongoing basis, to assure its chemical compatibility with FlowGuard Gold™, BlazeMaster™ and Corzan™ piping systems and products made with TempRite™ Technology.

The FBC Compatible Logo, FBC™, FlowGuard Gold™, BlazeMaster™, Corzan™, and TempRite™ are trademarks of Lubrizol Advanced Materials Inc. or its affiliates.





HydroFlame

Firestop Sleeve

Model #HFP-P5

Telescoping 7 1/2" - 11 3/4"

Pipe Type: Plastic/Metal

Type de Tuberia: Plástico/Metal, Tipo de Tubería: Plástico/Metal

Pipe Size

Diámetro de tubería

Dimension de la tubería

Min:

4"

Max:

5"

Instructions for Flat Form Deck Installation

1. Adjust sleeve to desired height.
Ajuste la manga a la altura deseada.
Ajuste la manga a la altura deseada.
Ajuste la manga a la altura deseada.
2. Secure sleeve with cap.
Asegure la manga con la tapa.
Asegure la manga con la tapa.
Asegure la manga con la tapa.

Table of Contents

Company

Revolutionizing Plumbing & Firestop Solutions 6

Better Solutions That Improve Job Site Efficiency7

A Valued Member of the RWC Family of Brands8

Transforming Firestop Solutions Through Industry Collaboration12

Firestop Products

HoldRite™ HydroFlame™

Sealants, Wraps , Pipe Collars, Putty Pads

Why HoldRite™ HydroFlame™ Expanded Suite of Firestop Technologies?15

HoldRite™ HydroFlame™ Sealants Product and Services Directory19

HoldRite™ HydroFlame™

Why HoldRite™ HydroFlame™ Pro Series Sleeves?28

HydroFlame™ Pro Series Product Configuration29

Reduce Installation Costs with HydroFlame™ Pro Series32

HydroFlame™ Pro Series Product and Services Directory35

Telescoping Electrical Firestop Sleeves52

Specifications

Specifications 57

Website Tools 62

Appendix

Index66



Revolutionizing Plumbing & Firestop Solutions

Understanding the plumber's perspective has always been in HoldRite's DNA. Even as we evolved into an international company, retaining a plumber's perspective has remained our strategic competitive advantage. We know that our value comes from constantly providing innovative plumbing products that improve job site efficiency and safety.

Our commitment to visiting our customers and listening to their input means that we understand plumbing applications better than anyone. This philosophy allows us to solve contractor problems, generate new revenue streams for distribution and provide superior engineered building projects— without increasing construction costs.

Better Solutions That Improve Job Site Efficiency

Ceiling/Floor Firestopping



Inefficient Solution

HoldRite™ HydroFlame™ Sealants



Reliable Solution

Ceiling/Floor Firestopping



Inefficient Solution

HoldRite™ HydroFlame™ Pro Series Sleeves



Reliable Solution

Sink Stub-out



Inefficient Solution

HoldRite™ Stout Brackets and Clamps



Reliable Solution

A Valued Member of the RWC Family of Brands

RWC is a powerful family of innovative brands that is designed to make our customers' lives easier. As part of the RWC family, HoldRite™ adds value by providing plumbing and firestop solutions that operate as an efficient system with our other subsidiaries.

We own our manufacturing process from concept to delivery and strive each day to ensure the quality of our products. HoldRite products have been designed and manufactured in the USA since 1982.

HoldRite has created a national footprint with strategically placed locations across the United States. With allied resources in Georgia, Alabama, Nevada and California, HoldRite is able to distribute patent-protected products to consumers in North America.

Developing engineered solutions that save time on the job site since 1982.

In 1982, Master Plumber George Hubbard designed a pipe support solution (The HoldRite 101-18) to replace the time-consuming and labor-intensive method of cutting blocks of wood for every job. Hubbard's invention revolutionized plumbing in North America by ushering in the plumbing methodology of secondary pipe support.

Today, HoldRite is an industry leader in products and services including secondary pipe supports, acoustic noise and vibration plumbing solutions, sleeving and firestop systems, equipment support, water heater accessories, and drain waste and vent (DWV) solutions.

Understanding your perspective has always been in our DNA. Even though we've evolved into an international company and recognized industry leading brand, we know our value comes from providing superior products and services for building projects— without increasing costs.

Thank you for giving us the opportunity to pioneer new products and transform the plumbing industry together.

holdrite.com



Protect Property Against the Spread of Fire, Smoke & Poisonous Gases

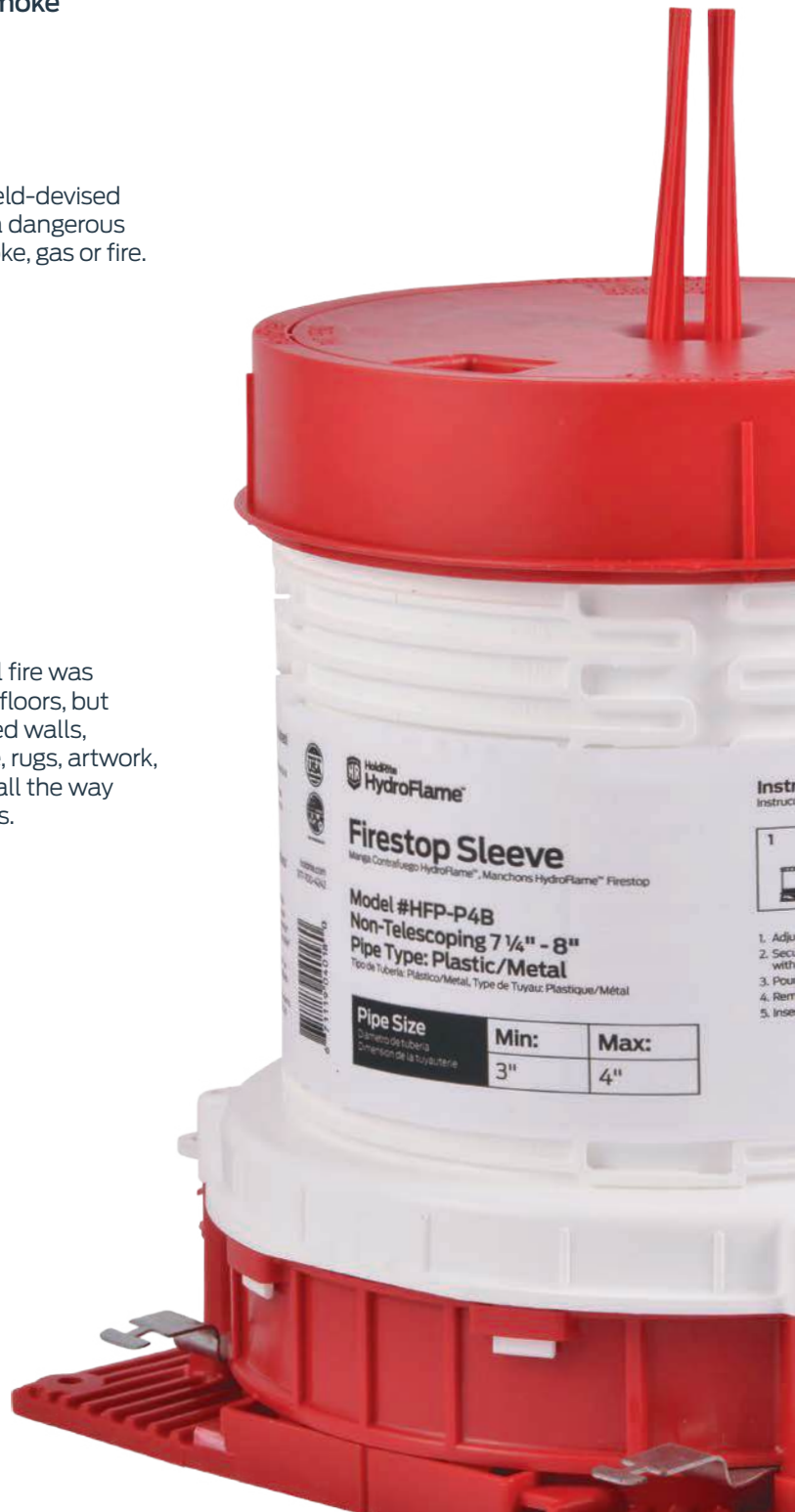
UL Listed for water and smoke, HoldRite™ HydroFlame™ cast-in-place sleeves provide a watertight seal to help prevent unwanted water intrusion while still guarding against the spread of fire, smoke and gases.



Commonly observed field-devised methods may provide a dangerous pathway for water, smoke, gas or fire.



Damage from this hotel fire was contained to the upper floors, but water damage destroyed walls, ceilings, floors, furniture, rugs, artwork, restaurants and stores all the way down to the lower floors.



Safeguard Property From Water Damage & Mold



Natural disasters, such as hurricanes and other storms, may cause schedule delays and water damage to buildings under construction.



Water damage may lead to significant health concerns, lawsuits and costly insurance claims.



Many buildings are designed to house data communication networks and computer equipment. Such high-tech investments are critical to corporations, healthcare facilities, military installations, government infrastructure and universities. HoldRite™ HydroFlame™ Pro Series helps protect these high-dollar assets from unwanted destruction caused by water, fire and smoke.

Transforming Firestop Solutions Through Industry Collaboration



Contractor

HoldRite™ HydroFlame™ Pro Series

Interlocking Telescoping Sleeve Design

- Eliminates the need to cut sleeves on the jobsite – quick installs
- 6 times faster install, compared to makeshift methods
- No caulking or mineral wool required
- Meet and exceeds building code requirements and UL Listed
- Telescoping sleeve allows height range of 2 ½" to 11 ¾"
- Extension sleeves available for greater than 11 ¾" thick slabs
- Accommodates various pipe types, conduits and cables sizes ½" to 6"
- Versatile product minimizes inventory variations
- Measurement guide system built into sleeves (US and Metric)
- Easy to order

Locator Whiskers

- Easily locate buried sleeves after concrete pour
- Quickly identify plastic pipe (red whiskers) or metal pipe (black whiskers) sleeve penetrations

Safety Cap

- Threaded cap allows for easy, non-destructive removal
- Meets OSHA hole cover requirements
- Safety cap attaches directly to telescoping or adjustable cap sleeve designs

Interlocking Nail-in Base

- Allows mixed sizes to mount together
- Ideal for layout alignment or tight locations
- Quickly identify plastic pipe (red base) or metal pipe (black base) sleeve penetrations

Watertight Mid-Body Seal

- Seal design ideally grips pipe with up to 10 times greater contact with pipe than other manufactured sleeve devices
- Substantially greater contact at the small end of the pipe range
- UL W rated
- Allows for movement – important in seismic zones
- Allows for off-center penetrations
- Aids with acoustic noise and vibration isolation



Wholesale Distributor

- Significant new revenue streams
- Easy to order, stock and inventory
- Sleeves allow for multiple pipe size ranges and material types to pass through
- Meets and exceeds building, fire and safety codes – UL Listed
- Sleeves are clearly labeled and color-coded, for simple selection
- Quick and easy to order through HoldRite
- HoldRite™ HydroFlame™ Pro Series typically ship within 48 hours
- Made in the USA
- No-charge submittal and specification compliance assistance from HoldRite, for your customers
- No-charge material take-off service through HoldRite, for your customers



Engineer/Architect

- UL Listed firestop devices
- Meet and exceed building and fire codes in the USA and Canada – UL and cUL Listed
- Protect property and occupants against damage from water, fire, smoke, gas, noise and seismic issues
- Prevent water, moisture and mold intrusion during construction and post-construction
- Isolate hurricane, storm and water damage
- Protect Owner/Developer interests
- FBC System Compatible – CPVC compatibility
- Integrate superior product without increasing installed costs
- Product specifications and custom specification authorship assistance available upon request
- Fully tested and rated (data available upon request)
- Use with combustible, non-combustible and insulated pipes, cables, conduits, etc.
- Extensive accessories available
- Eliminate one area for field installer error
- Complies with OSHA requirements for hole covers
- Made in the USA
- Easily available at Wholesale Distribution throughout the USA and Canada
- 3D CAD, BIM models and installation detail drawings available



Owner/Developer/General Contractor

- Meet and exceed building and fire codes
- UL Listed firestop devices
- Protect property and occupants against damage from water, fire, smoke, gas and seismic issues
- Potentially reduce insurance costs
- Reduce overall construction costs
- Reduce today's field installation errors and tomorrow's potential concerns
- Reduce time to dry floors and complete building – especially in high-rise construction
- Enhance safety and quality on the job with built-in OSHA-compliant safety hole covers
- Watertight floor penetrations compartmentalize future water damage within finished building
- Expedite cover inspections with built-in UL Listed firestop devices
- Increase safety by keeping floor surfaces free of water and ice during construction, minimizing slip and fall hazards
- Eliminate field applied sealants reducing human error factors, while improving UL fire ratings
- Easily available at Wholesale Distribution throughout the USA and Canada – fast lead times
- Made in USA



10.1 oz. (300ml)
Final Consistent

Single component
non-sag silicone
Limestone Gray to match
UL Greenguard Certified
Anti-leak properties
curing fast

Ready dispersed with
movement

Flexible + 30%
Low VOC
Repels water

Excellent for W Ratings
or weather conditions
Excellent freeze-thaw
1 Year shelf life

Compatible
JAC System

Silicon
Firestop

lite
Tro



Introducing an Expanded Suite of HoldRite™ HydroFlame™ Firestop Technologies

Introducing HoldRite™ HydroFlame™ firestop and acoustic sealants, intumescent wrap strips, intumescent pipe collars and putty pads.

You spoke. We listened. At HoldRite, our goal is to understand your perspective so that we can continue to provide you with firestop solutions that exceed your expectations. Previously, our product assortment focused strictly on cast-in-place solutions. Now, based on your feedback, we have expanded our offering from 36 UL System Listings to more than 300 so you can find the sleeving and the firestop solutions you need— all in one place.

HoldRite's all-new series of firestop sealants, wrap strips, pipe collars and putty pads are designed to work efficiently with a wide variety of wall and floor application solutions for both commercial and residential construction, for both wood-framed and concrete construction.

Sealants

HydroFlame sealants protect vertical and horizontal construction assemblies from smoke and acoustic penetration and help prevent intrusion of flames and gases. Our sealants are compatible with a wide range of materials, including interior rated gypsum, concrete and block walls, as well as rated concrete floors, concrete over metal decking floors and wood floor ceiling assemblies. Additionally, HoldRite HydroFlame sealants work with a variety of materials, such as cast iron, steel, steel conduits, copper pipe and tubing as well as non-metallic pipes such as PVC, CPVC, ABS, PVDF, PEX, PP pipes and more. Sealants can also be used around various cables/bundles and sheet metal ductwork.

Wrap Strips

The HydroFlame Wrap Strip is made of a high-performance, flexible, intumescent material that forms a protective char when exposed to heat in order to prevent the passage of flames and toxic gases. Use HydroFlame wrap strips with fire rated assemblies, large combustible pipe, insulated pipe penetrations within concrete/masonry walls, concrete and wood floors, and gypsum wall assemblies. They can also be used with a custom collar.

Pipe Collars

HydroFlame Pipe Collars are pre-assembled with highly intumescent material and are ideal for use in open and closed through-penetration firestop systems. Featuring an easy interlocking tab for efficient installation, HydroFlame's unique design helps save time and expense, when compared to other manufacturers' smaller collars. Use HydroFlame Pipe Collars for firestopping larger pipe penetrations. Collars are compatible with concrete floor and wall assemblies, as well as on gypsum wall and rated wood floors.

Putty Pads

HydroFlame Putty Pads are made of a moldable, non-curing, single component fire-rated material. Designed for membrane-penetration firestop systems, HydroFlame's putty expands when exposed to heat to form an insulating char. This protects against the spread of flames, smoke, gas and water through penetration openings. No mixing is required for application, and this product can be used on metal or nonmetallic electrical box outlets and electrical or mechanical cabinets.

Read on to explore HoldRite's all-new assortment of firestop solutions, **developed with your needs in mind**. Our sealants, wrap strips, pipe collars, putty pads and firestop accessories are designed to ensure the highest level of safety and efficiency on your job site.



HoldRite™ HydroFlame™ 50 **Smoke & Acoustic Sealant**

- Easily dispensed using a caulking gun
- Provides a flexible paintable sealant once cured
- Meets LEED criteria
- Low VOC content
- FBC™ system compatible
- Easily cleans up with water
- Clean Air Gold certified
- High STC Rating 69
- 2 Year shelf life



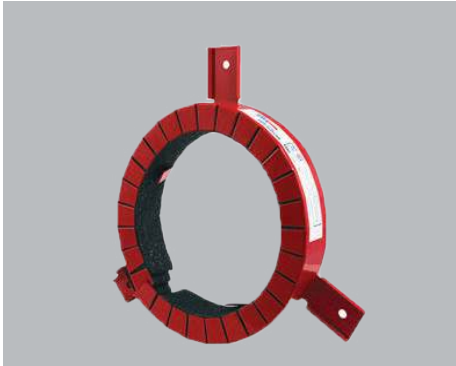
HoldRite™ HydroFlame™ 100 **Firestop Sealant**

- Flexible (Elastomeric)
- Low VOC
- Meets LEED Criteria
- Paintable
- Water based
- Excellent freeze-thaw
- High STC rating 65
- 3 year shelf life
- FBC™ system compatible
- Easily dispensed (caulking gun or trowel)
- G21 testing for obstruction of mold growth
- Clean Air Gold certified
- Tested to ASTM E814, UL 1479, and CAN/ULC S115 Testing Standards



HoldRite™ HydroFlame™ 200 Firestop Sealant

- Flexible (Elastomeric)
- Low VOC
- Meets LEED Criteria
- Paintable
- Water based
- Excellent freeze-thaw
- High performance intumescent
- Clean Air Gold certified
- 3 year shelf life
- FBC™ system compatible
- Easily dispensed (caulking gun or trowel)
- G21 testing for obstruction of mold growth
- Tested to ASTM E814, UL 1479, and CAN/ULC S115 Testing Standards
- High STC Rating of 66



HoldRite™ HydroFlame™

Pipe Collar

- Easy and fast installation
- Labor savings by not having to measure material
- Highly intumescent
- Economical solution for plastic pipes
- FBC™ system compatible
- Approved for PVC, CPVC, FRPP, ABS and PVC/ABS foam core insulations and more
- Clean Air Gold certified
- Tested to ASTM E814, UL 1479, and CAN/ULC S115 Testing Standard



HoldRite™ HydroFlame™

Putty Pads

- Possesses intumescent properties; expands when exposed to fire.
- No volatile solvents, which makes it particularly useful when installing in confined spaces or occupied areas
- Does not have asbestos fillers
- A single component putty system; no mixing necessary and no required additives
- DOT Classification is not regulated
- Applied by hand
- Easy to install
- Adheres to all common building surfaces
- Clean Air Gold certified
- UL listed CLIV
- High STC Rating of 66



HoldRite™ HydroFlame™

Wrap Strips

- No curing time
- Excellent freeze-thaw properties
- Simple to apply
- Systems up to 12" (PVC)
- Flexible
- Forms hardened char after expansion
- Highly intumescent
- Can be installed from the topside of floor eliminating the need for ladders
- FBC™ system compatible
- Clean Air Gold certified
- Can also be installed with a custom collar
- Approved for PVC, CPVC, FRPP, ABS and PVC/ABS foam core insulations and more
- Tested to ASTM E814, UL 1479, and CAN/ULC S115 testing standards

HoldRite™ HydroFlame™ Sealants

Product & Services Directory



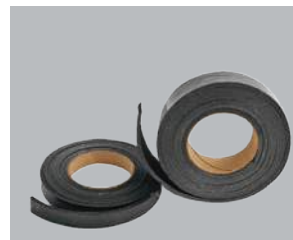
Sealants
Page 20



Pipe Collars
Page 23



Putty Pads
Page 24



Wrap Strips
Page 25



Caulk Guns
Page 26



Specifications
Page 57



Appendix
Page 66



HoldRite™ HydroFlame™ 50 Smoke & Acoustic Sealant

HoldRite™ HydroFlame™ 50 is a smoke and acoustic sealant used to seal around penetrations in non-rated horizontal or vertical construction assemblies. Works in conjunction with and complements HoldRite Silencer series in wall stud noise dampening systems. When properly installed, Hydroflame 50 will prevent the passage of cold smoke through the penetration opening to the other side of the non-rated assembly while also providing an excellent sound barrier by preventing the transfer of airborne sound and other vibrations from passing through to the other side of the assembly.

- Easily dispensed using a caulking gun
- Provides a flexible paintable sealant once cured
- Meets LEED criteria
- Low VOC content
- FBC™ system compatible
- Easily cleans up with water
- Clean Air Gold certified
- High STC rating 69
- 2 year shelf life
- Safe for plastic pipes
- Will not react to bituminous coatings on cast iron pipes

| Type | UL Rating | Status |
|-------------|-----------|--------|
| Smoke / Gas | L | ✓ |

| Model Number | Description | Size | Box Qty |
|--------------|----------------------------------|------------------|---------|
| HF50-20S | Smoke & Acoustic Sealant (White) | 20.2 oz. Sausage | 12 |



HoldRite™ HydroFlame™ 100 Firestop Sealant

HoldRite™ HydroFlame™ 100 is an elastomeric water-based single component non-sag firestop sealant. It is convenient in areas and conditions where dynamic movement is expected. A perfect firestop sealant for new and existing penetrations through interior rated gypsum, concrete and block walls as well as rated concrete floors, concrete over metal decking floors and wood floor ceiling assemblies. When properly installed, HydroFlame 100 will prevent the passage of smoke, gasses and flames through openings around penetrating items. HydroFlame 100 is ready to be dispensed out of the package and does not require thinning or mixing. It is simple to install and can be dispensed out of any standard caulking gun or bulk loader that is designed for 10-, 20- or 30-ounce packaging. Additionally, It can easily be troweled out of a 5-gallon bucket. HydroFlame 100 UL systems are rated up to 4 hours as tested in conformance to ASTM E814 or UL 1479 and CAN/ULC S115 Testing Standards.

| Type | UL Rating | Status |
|-------------|-----------|--------|
| Water | W | ✓ |
| Smoke / Gas | L | ✓ |
| Fire | F | ✓ |
| Thermal | T* | ✓ |

- Flexible (Elastomeric)
- Low VOC
- Paintable
- Water based
- Excellent freeze-thaw
- High STC Rating 65
- 3 year shelf life
- FBC™ system compatible
- Easily dispensed (caulking gun or trowel)
- G21 testing for obstruction of mold growth
- Clean Air Gold certified
- Safe for plastic pipes

| Model Number | Description | Size | Qty |
|--------------|------------------------|--------------------|---------------|
| HF100-10C | Firestop Sealant (Red) | 10.3 oz. Cartridge | 12 per box |
| HF100-20S | Firestop Sealant (Red) | 20.2 oz. Sausage | 12 per box |
| HF100-30C | Firestop Sealant (Red) | 30 oz. Cartridge | 12 per box |
| HF100-5B | Firestop Sealant (Red) | 5 Gal. | 36 per pallet |



HoldRite™ HydroFlame™ 200 Firestop Sealant

HoldRite™ HydroFlame™ 200 is an elastomeric water-based single component non-sag highly intumescent firestop sealant. It is convenient in areas and conditions where dynamic movement is expected. A perfect firestop sealant for new and existing penetrations through interior rated gypsum, concrete and block walls as well as rated concrete floors, concrete over metal decking floors and wood floor ceiling assemblies. When properly installed, HydroFlame 200 will prevent the passage of smoke, gasses and flames through openings around penetrating items. HydroFlame 200 is ready to be dispensed out of the package and does not require thinning or mixing. It is simple to install and can be dispensed out of any standard caulking gun or bulk loader that is designed for 10-, 20- or 30-ounce packaging. It can also easily be troweled out of a 5-gallon bucket. HydroFlame 200 UL systems are rated up to 4 hours as tested in accordance to ASTM E814 or UL 1479 and CAN/ULC-S115 testing standards.

| Type | UL Rating | Status |
|-------------|-----------|--------|
| Water | W | ✓ |
| Smoke / Gas | L | ✓ |
| Fire | F | ✓ |
| Thermal | T* | ✓ |

- Flexible (Elastomeric)
- Low VOC
- Paintable
- Water based
- Excellent freeze-thaw
- High performance intumescent
- Clean Air Gold certified
- 3 year shelf life
- FBC™ system compatible
- Easily dispensed (caulking gun or trowel)
- G21 testing for obstruction of mold growth
- Safe for plastic pipes
- High STC Rating of 66

| Model Number | Description | Size | Qty |
|--------------|------------------------|--------------------|---------------|
| HF200-10C | Firestop Sealant (Red) | 10.3 oz. Cartridge | 12 per box |
| HF200-20S | Firestop Sealant (Red) | 20.2 oz. Sausage | 12 per box |
| HF200-30C | Firestop Sealant (Red) | 30 oz. Cartridge | 12 per box |
| HF200-5B | Firestop Sealant (Red) | 5 Gal. | 36 per pallet |



HoldRite™ HydroFlame™ Pipe Collar

HoldRite™ HydroFlame™ Pipe Collars are prefabricated for open and closed through-penetration firestop systems using 1-1/2" (38 mm) to 6" (152 mm) plastic pipe. An easy interlocking tab assures fast and easy installation. The design of the collar greatly reduces the time and expense that is required to install competitive collars. Tested in accordance to ASTM E814 or UL 1479 and CAN/ULC-S115 testing standards.

- No curing time
- Easy and fast installation
- Labor savings by not having to measure material
- Highly intumescent
- Economical solution for plastic pipes
- FBC™ system compatible
- Approved for PVC, CPVC, FRPP, ABS and PVC/ABS foam core insulations and more
- Clean Air Gold certified

| Type | UL Rating | Status |
|---------|-----------|--------|
| Fire | F | ✓ |
| Thermal | T* | ✓ |

*T-Rating when penetrant is non-metallic

| Model Number | Description | Size | Box Qty |
|--------------|-------------|------|---------|
| HF-PC-0150 | Pipe Collar | 1½" | 12 |
| HF-PC-0200 | Pipe Collar | 2" | 12 |
| HF-PC-0300 | Pipe Collar | 3" | 6 |
| HF-PC-0400 | Pipe Collar | 4" | 6 |
| HF-PC-0600 | Pipe Collar | 6" | 2 |



HoldRite™ HydroFlame™ Putty Pads

HoldRite™ HydroFlame™ moldable putty pads are a non-curing single component fire-rated material for membrane-penetration firestop systems. HydroFlame putty will intumesce and expand when exposed to heat, forming an insulating char. In the event of a fire, putty pads will prevent the spread of flames, smoke and gas through penetration openings. Putty pads are applied by hand and mixing is never required. HydroFlame Putty Pads are rated for up to 3 hours as tested in accordance to ASTM E814, UL 1479, and CAN/ULC S115 testing standards. HydroFlame putty pads are designed to be used in conjunction with metallic or non-metallic electrical box outlets.

- Possesses intumescent properties; expands when exposed to fire
- No volatile solvents, which makes it particularly useful when installing in confined spaces or occupied areas
- Does not have asbestos fillers
- A single component putty system; no mixing necessary and no required additives
- DOT Classification is not regulated
- Applied by hand
- Easy to install
- Adheres to all common building common surfaces
- Clean Air Gold certified
- UL Listed CLIV

| Type | UL Rating | Status |
|-------------|-----------|--------|
| Smoke / Gas | L | ✓ |
| Fire | F | ✓ |

| Model Number | Description | Size | Box Qty |
|--------------|-------------|----------------|---------|
| HF-PP-1 | Putty Pad | 7" x 7" x 1/8" | 20 |
| HF-PP-2 | Putty Pad | 9" x 9" x 1/8" | 20 |



HoldRite™ HydroFlame™ Wrap Strips

The HoldRite™ HydroFlame™ Wrap Strip is a high-performance highly intumescent flexible wrap strip that is designed to expand when exposed to heat. Wrap strips are intended to be used around combustible pipes and insulated pipes as a solution to seal off these challenging pipes in the event of a fire. When the wrap strip activates and intumesces due to heat, it will form a robust char that will seal off the opening around the penetrating items or will close off completely the annular space that is exposed once combustible pipes melt away. This prevents the passage of hot gases and flames to migrate to the other side of a fire-rated assembly. Tested in accordance to ASTM E814, UL 1479 and CAN/ULC S115 testing standards.

- No curing time
- Excellent freeze-thaw properties
- Simple to apply
- Systems up to 12" (PVC)
- Flexible
- Forms hardened char after expansion
- Highly intumescent
- Can be installed from the topside of floor eliminating the need for ladders, refer to specific UL details
- FBC™ System Compatible
- Clean Air Gold certified
- Can also be used with custom collar

| Type | UL Rating | Status |
|-------------|-----------|--------|
| Smoke / Gas | L | ✓ |
| Fire | F | ✓ |
| Thermal | T* | ✓ |

| Model Number | Description | Size | Box Qty |
|-----------------|---------------|---------------|---------|
| HF-WS14-0100 | Wrap Strips | 1" x 12' Roll | 6 |
| HF-WS14-0200-36 | Wrap Strips | 2" x 36' Roll | 2 |
| HF-CC-0100 | Custom Collar | 1" x 50' Roll | 1 |
| HF-CC-0200 | Custom Collar | 2" x 50' Roll | 1 |



HF-CG-20SP | Premium Caulk Gun Shown

HoldRite™ HydroFlame™ Caulk Guns

- Designed for standard viscosity materials
- Full size handle for comfortable, efficient dispensing
- Double gripping plate technology for no slipping and long life
- Convenient rotating swivel barrel
- Durable sausage pistons prevent bag-wrap



HoldRite™ HydroFlame™ Follow Plates

- Neoprene seal can be used with straight & tapered bucket
- For 2" diameter barrel bulk gun
- 5 Gal. Diameter- 11.5" With 1" neoprene seal
- No threaded barrel docking (air tight o-ring)




HoldRite™ HydroFlame™ Replacement Tips

- Easily replace caulking tips

| Model Number | Description | Size | Box Qty |
|--------------|-----------------------------|--------|---------|
| HF-CG-20SP | Premium Caulk Gun with logo | 20 oz. | 10 |
| HF-CG-20SE | Economy Caulk Gun | 20 oz. | 1 |
| HF-CG-32B | Bulk Loading Caulk Gun | 32 oz. | 6 |
| HF-FP-5 | Bulk Loading Follow Plate | 5 Gal. | 12 |
| HF-CG-T20 | Replacement Tips (Cone) | 20 oz. | 20 |
| HF-CG-T32 | Replacement Tips (Cone) | 32 oz. | 20 |





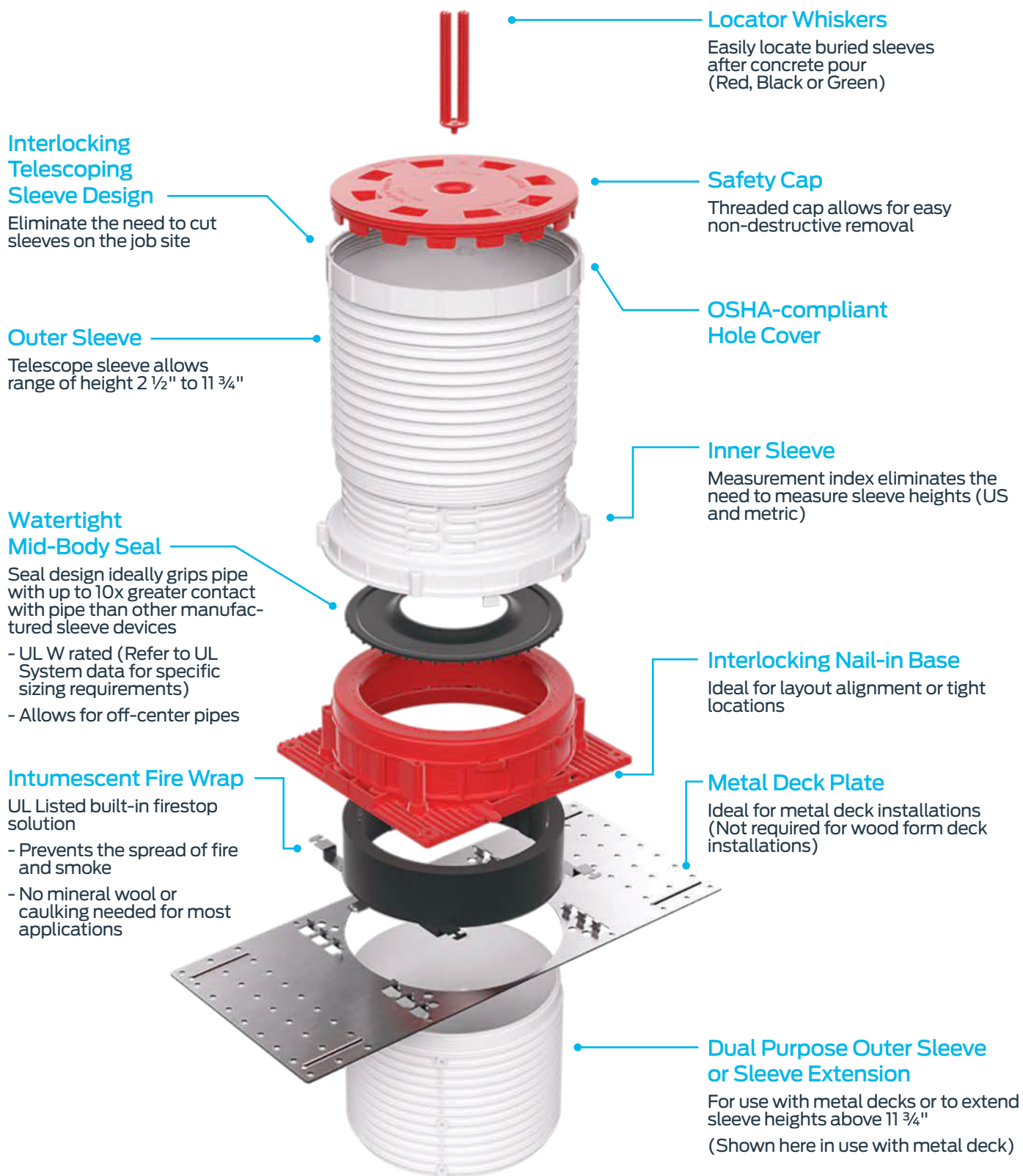
Transforming Firestop Solutions with HoldRite™ HydroFlame™ Pro Series

The evolution of a lab-tested and UL Listed cast-in-place firestop solution continues with the introduction of the HoldRite™ HydroFlame™ Pro Series. Finally, an easy to specify, stock, order and install firestop solution is available on wholesale distributors' shelves throughout North America. Finished are the decades of frustration, significant pre-planning requirements, complex purchase orders, tight delivery deadlines and job site fabrication challenges.

The HoldRite team is proud to manufacture the HydroFlame Pro Series in the USA and to ensure it meets and exceeds building code requirements, protects the project against the dangers of fire, gas and smoke spread, safeguards property from water damage and mold, and eliminates field-devised installation methods from building projects.

Available now for purchase at your wholesale distributor of choice.

Cast-in-place Firestop Sleeve Product Configuration



No assembly required

Transforming Firestop Solutions

Telescoping Sleeves

- Eliminate the need to cut sleeves on most job sites

Locator Whiskers

- Locate buried sleeves after concrete pour

Safety Cap

- OSHA-compliant hole cover
- Helps keep job site and installers safe

For Wood or Metal Form Decks

- Telescoping or adjustable cap design

Firestop a Wide Variety of Pipe Type & Sizes

- Material type and pipe sizes easily identifiable (1/2" to 6")

Superior Seal

- UL W rated (Refer to UL System data for sizing requirements)

Interlocking Nail-in Base

- Ideal for alignment layout and tight install locations

Numerous Accessories Available

- Telescoping extension, water module, water dam, aerator adaptor box and safety cap tool

Faster Install

- Up to 6 times faster to install than makeshift methods

Easy to Stock

- Available in stock at your local wholesale distributor

UL Listed Firestop Device

- Meets and exceeds building code requirements



Patented and Patent Pending.

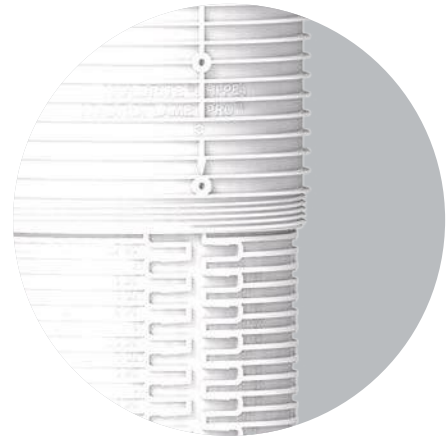


FBC™ System Compatible indicates that this products has been tested, and is monitored on an ongoing basis, to assure its chemical compatibility with FlowGuard Gold™, BlazeMaster™ and Corzan™ piping systems and products made with TempRite™ Technology.

The FBC Compatible Logo, FBC™, FlowGuard Gold™, BlazeMaster™, Corzan™, and TempRite™ are trademarks of Lubrizol Advanced Materials Inc. or its affiliates.

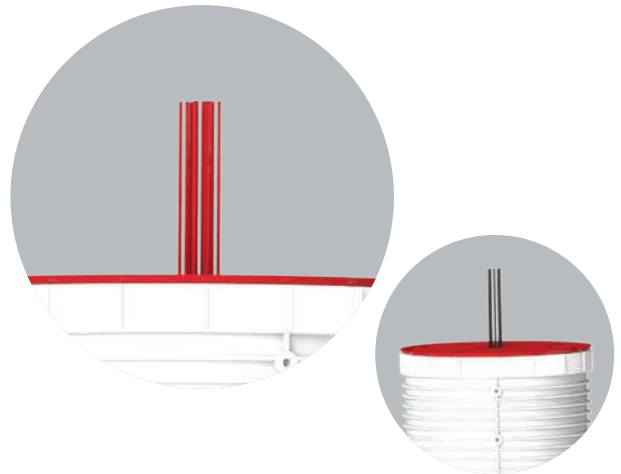
HoldRite™ HydroFlame™ Pro Series Interlocking Telescoping Sleeve Design

- Eliminate the need to cut sleeves on the jobsite
- Adjust sleeve to desired height 2 ½" to 11 ¾"
- Extension sleeves available for greater than 11 ¾"
- Accommodates various pipe, conduit and cable types and sizes ½" to 6"
- Firestop sleeve with adjustable cap design also available at 7 ¼" to 8" tall
- Faster install over traditional methods or other manufactured designs
- Measurement guide system built into sleeves (US and Metric)
- Significantly reduces the number of SKU's required to stock shelves or complete job



HoldRite™ HydroFlame™ Pro Series Locator Whiskers

- Easily locate buried sleeves after concrete pour
- Quickly identify plastic pipe (red whiskers) or metal pipe (black whiskers) sleeve penetrations
- Green whiskers also available to identify electrical penetrations



HoldRite™ HydroFlame™ Pro Series Safety Cap

- Adjustable cap can be removed by using hammer or screwdriver
- Both caps meet OSHA hole cover safety requirements
- Adjustable cap provides sleeve heights from 7 ¼" to 8" in ¼" increments



Telescoping Sleeve Cap
and Safety Cap Tool



Adjustable Cap
(Knock Out)

HoldRite™ HydroFlame™ Pro Series Interlocking Nail-in Base

- Ideal for alignment layout and tight install locations
- Fast and easy installation
- Quickly identify plastic pipe or metal pipe (red base) or metal pipe (black base) sleeve penetrations



Reduce Installation Costs with the HoldRite™ HydroFlame™ Pro Series

Application Cost Savings Analysis Example

Install sleeve and firestop for a 2" pipe through an 8" thick concrete slab on a wood form deck.

Inefficient Plastic Concrete Sleeve Solution

| Installation Steps | Approx. Mat. Cost | Labor Time |
|--|-------------------|------------|
| 1. Select 4" sleeve, measure and mark for saw cutting | \$3.00 | 1 minute |
| 2. Cut sleeve, in prep for re-assembly to slab height of 8" | | 1 minute |
| 3. Build sleeve to height with screw gun, screws and tape | 50¢ | 3 minutes |
| 4. Nail sleeve to form deck (concrete poured by others) | | 2 minutes |
| 5. Remove/demolish sleeve out of hole | | 5 minutes |
| 6. Buy material, cut, build and install hole cover (OSHA) | \$1.00 | 2 minutes |
| 7. Clean-up sleeve debris on floor below | | 1 minute |
| 8. Remove hole cover. Install pipe with riser clamp | | 2 minutes |
| 9. Collect, store and re-distribute hole cover up stairs | | 1 minute |
| 10. Remove riser clamp for access to annular space | | 1 minute |
| 11. Install and compact mineral wool material into annular space | 50¢ | 2 minutes |
| 12. Install fire caulk to proper thickness and trowel level | \$1.00 | 2 minutes |
| 13. Re-install riser clamp (and hope pipe didn't settle) | | 1 minute |
| 14. Clean debris, hands and tools and caulking tube and store for re-use | | 2 minutes |
| Totals: | | |
| Approximate Material Costs | \$6.00 | |
| Time | | 26 minutes |
| Labor Cost at \$50/hour | \$21.67 | |
| Total Installed Cost (T&M) | \$27.67 | |

HoldRite HydroFlame Pro Series

| Installation Steps | Approx. Mat. Cost | Labor Time |
|--|-------------------|------------|
| 1. Select sleeve size and nail it to form deck (concrete poured by others) | \$9.00 | 2 minutes |
| 2. Remove cap and install pipe with riser clamp | | 2 minutes |
| Totals: | | |
| Approximate Material Costs | \$9.00 | |
| Time | | 4 minutes |
| Labor Cost at \$50/hour | \$3.33 | |
| Total Installed Cost (T&M) | \$12.33 | |

Save **\$15.34** per installation over the problematic inefficient method.



HoldRite™ HydroFlame™ Pro Series

Firestop Sleeve Advantages vs. Commonly Observed Cast-in-place Devices

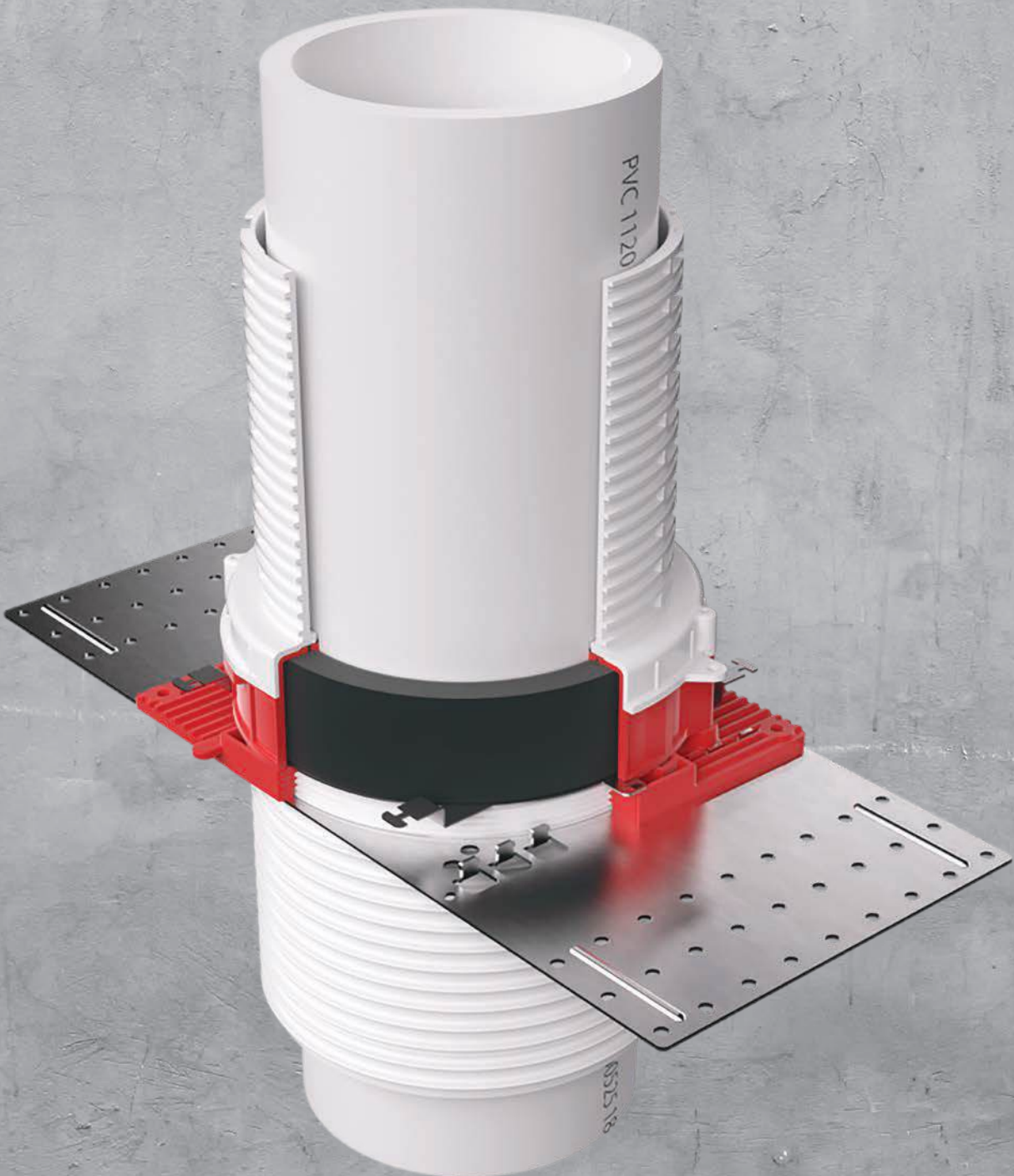


| HoldRite™ HydroFlame™ Pro Series | Features and Benefits | Commonly Observed Cast-in-place Sleeves |
|----------------------------------|--|---|
| ✓ | Adjustable height sleeves | ✗ |
| ✓ | Fast install | ✗ |
| ✓ | UL W-Rated watertight mid-body seal (Refer to UL System data for specific sizing requirements) | ✗ |
| ✓ | Locator whiskers to locate sleeves after pour | ✗ |
| ✓ | Safety caps are easy to remove without demolition | ✗ |
| ✓ | Aerator adapter available in 2", 3", 4", 5" and 6" varieties | ✗ |
| ✓ | Available exclusively through wholesale distribution | ✗ |
| ✓ | Most stable metal deck kit and requires just one accessory | ✗ |
| ✓ | UL fire rated for 1/2"-6" pipes and conduits without any accessories | ✗ |
| ✓ | Hollow sleeve versions available if caulking is preferred | ✗ |
| ✓ | Made in the USA | ✗ |
| ✓ | Most stable sleeve height extensions on the market | ✗ |
| ✓ | Excellent shower & floor drain, tub box and toilet sleeve kits | ✗ |
| ✓ | Height markings & straight lines aid in cutting sleeves short | ✗ |





HoldRite
HydroFlame™



HoldRite™ HydroFlame™ Pro Series

Product & Services Directory



Telescoping Firestop Sleeves
Page 36



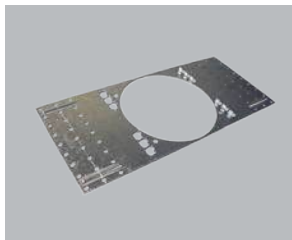
Firestop Sleeves with Adjustable Cap
Page 37



Telescoping Hollow Sleeves (Sleeves Only)
Page 38



Hollow Sleeves with Adjustable Cap (Sleeves Only)
Page 39



Corrugated Metal Deck Plates
Page 40



Sleeve Extensions
Page 41



Water Modules
Page 42



Water Dams
Page 43



Tub Boxes
Page 44



Aerator Adapters
Page 45



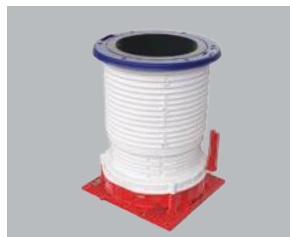
Plastic Shower Drain Sleeves (Drain Not Included)
Page 46



Cast Iron Drain Sleeves (Drain Not Included)
Page 47



Cable and Line-Set Sleeves
Page 48



Closet Flange Sleeves (Flange Not Included)
Page 49



Safety Cap Tool
Page 49



Large Diameter Firestopping Sleeves
Page 50



Large Diameter Hollow Sleeves
Page 50



Large Diameter Extensions
Page 51



Specifications
Page 57



Index
Page 66



HoldRite™ HydroFlame™ Pro Series Telescoping Firestop Sleeves

- Ideal for flat concrete form decks – cast-in-place
- Ideal for corrugated metal decks (corrugated deck plate required)
- Available for ½" to 6" penetrants – piping, conduit, cables, etc.
- For insulated and non-insulated pipes
- Telescoping design adjusts from 7½" to 11¾", in ¼" increments
- Cut to as short as 2½"
- Black base and black whiskers identifies metal piping system
- Red base and red whiskers identifies plastic or metal piping system
- Includes locator whiskers, to locate buried sleeves and to identify pipe type (metal or plastic)
- Dimensions on sleeves allows for simple height adjustments
- Safety caps meet OSHA hole cover requirements
- Refer to UL System data for specific sizing requirements
- Meets and/or exceeds building code requirements
- Built in fire, smoke, gas and water protection
- UL W-Rated seal, water-tight for most penetrants (Refer to UL System data for specific sizing requirements)
- Allows for contraction, expansion, movement and off-center pipes
- Reduces piping system noise transfer by maintaining annular spacing
- Interlocking base capability assists with layout alignment
- Extensions available for slabs over 11¾" thick
- A variety of accessories are available
- UL 50 Pa Ratings
- Tested to ASTM E814, UL 1479, and CAN/ULC S115 testing standards

| Type | UL Rating | Status |
|-------------|-----------|--------|
| Water | W** | ✓ |
| Smoke / Gas | L | ✓ |
| Fire | F | ✓ |
| Thermal | T* | ✓ |

*T-Rating when penetrant is non-metallic

**W-Rated- Refer to UL System data for specific sizing requirements

| Model Number | Penetrating Pipe Type | Nominal Penetrant Size | Box Qty |
|--------------|-----------------------|------------------------|---------|
| HFP-P1 | Plastic and Metal | ½" - 1" | 10 |
| HFP-P2 | Plastic and Metal | 1¼" - 2" | 10 |
| HFP-P3 | Plastic and Metal | 2" - 3" | 10 |
| HFP-P4 | Plastic and Metal | 3" - 4" | 10 |
| HFP-P5 | Plastic and Metal | 4" - 5" | 2 |
| HFP-P6 | Plastic and Metal | 5" - 6" | 2 |
| HFP-M1 | Metal | ½" - 1" | 10 |
| HFP-M2 | Metal | 1¼" - 2" | 10 |
| HFP-M3 | Metal | 2" - 3" | 10 |
| HFP-M4 | Metal | 3" - 4" | 10 |
| HFP-M5 | Metal | 4" - 5" | 2 |
| HFP-M6 | Metal | 5" - 6" | 2 |



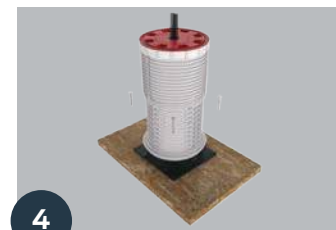
1
Cut inner and outer sleeve
if desired height is less than 8"



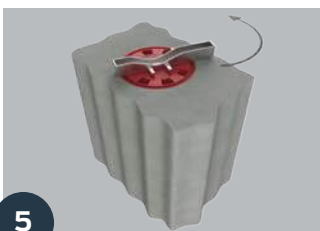
2
Lock outer sleeve in place



3
Re-install cap & insert whiskers



4
Nail to form deck



5
Remove cap with Safety Cap Tool
or break out with hammer



6
Install pipe



HoldRite™ HydroFlame™ Pro Series Firestop Sleeves with Adjustable Cap

- Ideal for flat concrete form decks – cast-in-place
- Ideal for corrugated metal decks (corrugated deck plate required)
- Available for ½" to 6" penetrants, piping, conduits, cables, etc.
- For insulated and non-insulated pipes
- The firestop sleeve with adjustable cap is 7¼" to 8" tall in ¼" increments
- The sleeve is set at 8" tall in the factory
- Black base and black whiskers identifies metal piping system
- Red base and red whiskers identifies plastic or metal piping system
- Includes locator whiskers, to locate buried sleeves and to identify pipe type (metal or plastic)
- Dimensions on sleeve allows for simple height adjustment when cutting
- Safety caps meet OSHA hole cover requirements
- UL Listed firestop devices (2 or 3 hour F-ratings)
- Meets and/or exceeds building code requirements
- Built in fire, smoke, gas and water protection
- UL W-Rated seal, water-tight for most penetrants (Refer to UL System data for specific sizing requirements)
- Allows for contraction, expansion, movement and off-center pipes
- Reduces piping system noise transfer by maintaining annular spacing
- Interlocking base capability assists with layout alignment
- A variety of accessories are available
- UL 50 Pa Ratings
- Tested to ASTM E814, UL 1479, and CAN/ULC S115 testing standards
- Field modifications can be made down to 3-1/2 inches

*T-Rating when penetrant is non-metallic

**W-Rated- Refer to UL System data for specific sizing requirements

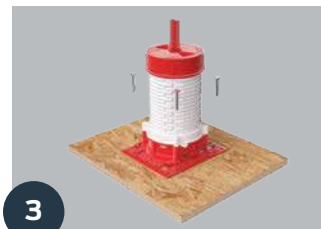
| Model Number | Penetrating Pipe Type | Nominal Penetrant Size | Box Qty |
|--------------|-----------------------|------------------------|---------|
| HFP-P1B | Plastic and Metal | ½" - 1" | 10 |
| HFP-P2B | Plastic and Metal | 1¼" - 2" | 10 |
| HFP-P3B | Plastic and Metal | 2" - 3" | 10 |
| HFP-P4B | Plastic and Metal | 3" - 4" | 10 |
| HFP-P5B | Plastic and Metal | 4" - 5" | 2 |
| HFP-P6B | Plastic and Metal | 5" - 6" | 2 |
| HFP-M1B | Metal | ½" - 1" | 10 |
| HFP-M2B | Metal | 1¼" - 2" | 10 |
| HFP-M3B | Metal | 2" - 3" | 10 |
| HFP-M4B | Metal | 3" - 4" | 10 |
| HFP-M5B | Metal | 4" - 5" | 2 |
| HFP-M6B | Metal | 5" - 6" | 2 |



Adjustable Cap



Insert whiskers



Nail to form deck



Pour concrete



Knock out safety cap with hammer or screwdriver



Install pipe



| Type | UL Rating | Status |
|-------------|-----------|--------|
| Water | W* | ✓ |
| Smoke / Gas | L | ✓ |
| Fire | F | ✓ |
| Thermal | T* | ✓ |

*T-Rating when penetrant is non-metallic
 *W-Rated when used with silicone sealant

HoldRite™ HydroFlame™ Pro Series Telescoping Hollow Sleeves

(Sleeve only, no firestopping materials included)

- UL Listed sleeves, when installed per UL Systems
- No intumescent material included. Can achieve a 2 or 3 hour F rating by adding in mineral wool and HydroFlame firestop sealants. See UL listing for further details
- Telescoping design adjusts from 7½" to 11¾", in ¼" increments
- Cut to as short as 4½"
- Available for ½" to 6" penetrants – piping, etc.
- For insulated and non-insulated pipes
- Fast, simple concrete sleeve for flat form decks
- Includes locator whiskers, to locate buried sleeves
- Dimensions on sleeve allows for simple height adjustment when cutting
- Safety caps meet OSHA hole cover requirements
- No field assembly required
- Sleeve remains in slab, unlike typical hollow sleeves
- Accepts HoldRite HydroFlame Pro Series Corrugated Metal Deck Plate, for corrugated deck forms
- Extensions are available for slabs over 11¾" thick
- A variety of accessories are available
- Tested to ASTM E814, UL 1479, and CAN/ULC S115 testing standards

| Model Number | Penetrating Pipe Type | Nominal Penetrant Size | Box Qty |
|--------------|-----------------------|------------------------|---------|
| HFP-H2 | Plastic and Metal | ¼" - 1 ¼" | 10 |
| HFP-H3 | Plastic and Metal | 1" - 2" | 10 |
| HFP-H4 | Plastic and Metal | 1¼" - 3" | 10 |
| HFP-H5 | Metal | 2½" - 4" | 10 |
| HFP-H6 | Metal | 3" - 5" | 2 |
| HFP-H7 | Metal | 4" - 6" | 2 |

Suffix "-S" added to model number provides a mid-body water seal



1
 Cut inner and outer sleeve if desired height is less than 8"



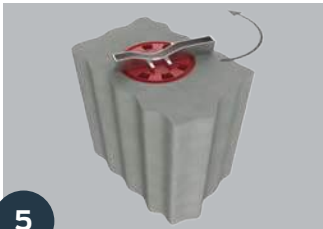
2
 Lock outer sleeve in place



3
 Re-install cap & insert whiskers



4
 Nail to form deck



5
 Remove cap with Safety Cap Tool or break out with hammer



6
 Install pipe



7
 Install mineral and fire caulking as required



HoldRite™ HydroFlame™ Pro Series Hollow Sleeves with Adjustable Cap

(Sleeve only, no firestopping materials included)

- UL Listed sleeves, when installed per UL systems
- No intumescent material included. Can achieve a 2 or 3 hour F rating by adding in mineral wool and HydroFlame firestop sealants. See UL listing for further details
- The hollow sleeve with adjustable cap is 7¼" to 8" tall in ¼" increments
- The sleeve is set at 8" tall in the factory
- Available for ½" to 6" penetrants – piping, etc.
- For insulated and non-insulated pipes
- Fast, simple concrete sleeve for flat form decks
- Includes locator whiskers, to locate buried sleeves
- Dimensions on sleeve allows for simple height adjustment when cutting
- Safety caps meet OSHA hole cover requirements
- No field assembly required
- Sleeve remains in slab, unlike typical hollow sleeves
- Accepts HoldRite HydroFlame Pro Series Corrugated Metal Deck Plate, for corrugated deck forms
- Extensions are available
- A variety of accessories are available
- Tested to ASTM E814, UL 1479, and CAN/ULC S115 testing standards

*T-Rating when penetrant is non-metallic

*W-Rated when used with silicone sealant

| Model Number | Penetrating Pipe Type | Nominal Penetrant Size | Box Qty |
|--------------|-----------------------|------------------------|---------|
| HFP-H2B | Plastic and Metal | ¼" - 1¼" | 10 |
| HFP-H3B | Plastic and Metal | 1" - 2" | 10 |
| HFP-H4B | Plastic and Metal | 1¼" - 3" | 10 |
| HFP-H5B | Metal | 2½" - 4" | 10 |
| HFP-H6B | Metal | 3" - 5" | 2 |
| HFP-H7B | Metal | 4" - 6" | 2 |

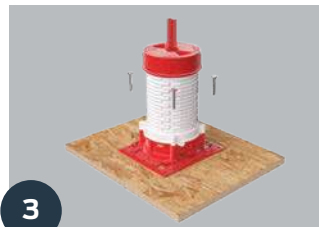
Suffix "-S" added to model number provides a mid-body water seal



Adjustable Cap



Insert whiskers



Nail to form deck



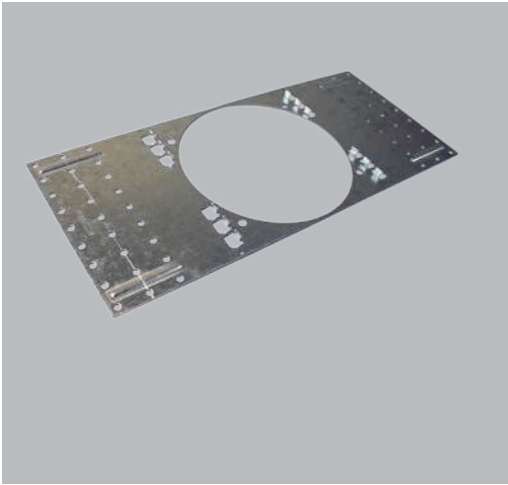
Pour concrete



Knock out safety cap with hammer or screwdriver



Install pipe



HoldRite™ HydroFlame™ Pro Series Corrugated Metal Deck Plates

- For use with concrete pours over corrugated metal decks
- Assembles directly to HoldRite HydroFlame Pro Series Firestop Sleeves
- Sizes available for 1", 2", 3", 4", 5", and 6" sleeves
- Superior strength and stability
- One-piece metal deck solution

(*Must be ordered with HydroFlame Pro Series Sleeves)

| Model Number | Penetrating Pipe Type | Used With | Nominal Penetrant Size | Box Qty |
|--------------|-----------------------|--------------------------------------|------------------------|---------|
| HFPCD1 | Plastic and Metal | HFP-P/M1, HFP-P/M1B, HFP-H2, HFP-H2B | ¼" - 1 ¼" | 10 |
| HFPCD2 | Plastic and Metal | HFP-P/M2, HFP-P/M2B, HFP-H3, HFP-H3B | 1" - 2" | 10 |
| HFPCD3 | Plastic and Metal | HFP-P/M3, HFP-P/M3B, HFP-H4, HFP-H4B | 1¼" - 3" | 10 |
| HFPCD4 | Plastic and Metal | HFP-P/M4, HFP-P/M4B, HFP-H5, HFP-H5B | 2½" - 4" | 10 |
| HFPCD5 | Plastic and Metal | HFP-P/M5, HFP-P/M5B, HFP-H6, HFP-H6B | 3" - 5" | 10 |
| HFPCD6 | Metal | HFP-P/M6, HFP-P/M6B, HFP-H7, HFP-H7B | 4" - 6" | 10 |
| HFPCD6-DC | Plastic and Metal | HFP-P/M6, HFP-P/M6B, HFP-H7, HFP-H7B | 4" - 6" | 2 |

Note: Use of a CD Plate must be accompanied with use of an outer sleeve or sleeve extension, as shown in installation step #3 below.



1
Cut inner and outer sleeve
if desired height is under 8"



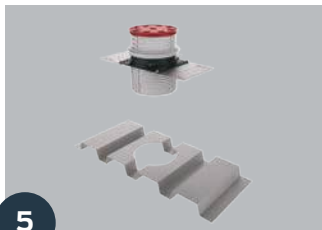
2
Install CD Plate



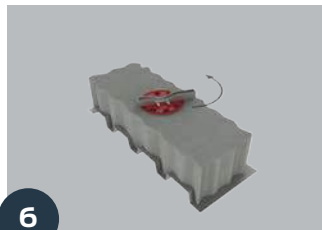
3
Install inverted outer sleeve
to bottom of base



4
Re-install cap & insert whiskers



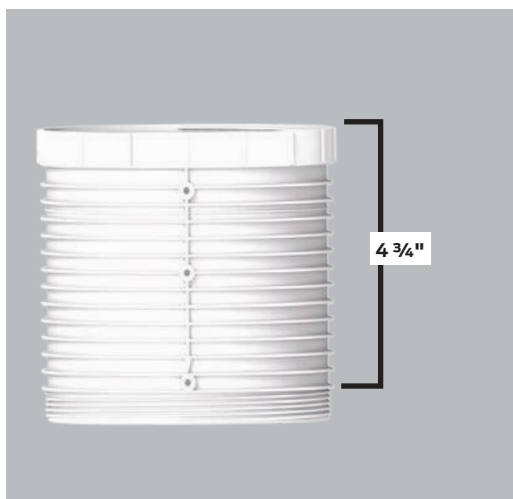
5
Install HoldRite HydroFlame Pro
sleeve assembly into
corrugated deck



6
Remove cap with Safety Cap
Tool or break out with hammer



7
Install pipe



HoldRite™ HydroFlame™ Pro Series Extension Sleeves

- Extends the height of HoldRite HydroFlame Pro Series sleeves by as much as 4¾ in ¼" increments
- No coupling needed for connection to sleeves
- Ideal for use on concrete pours over 11¾"
- Available for all HoldRite HydroFlame Pro Series sleeve sizes
- Connects to safety caps, water dams, water modules and underside of sleeves

Sleeve Extensions for Telescoping Firestop and Hollow Sleeves

| Model Number | Fits Firestop Sleeves | Fits Hollow Sleeves | Nominal Penetrant Size | Box Qty |
|--------------|-----------------------|---------------------|------------------------|---------|
| HFPE1 | #1 Firestop Sleeves | #2 Hollow Sleeves | ¼" - 1¼" | 5 |
| HFPE2 | #2 Firestop Sleeves | #3 Hollow Sleeves | 1" - 2" | 10 |
| HFPE3 | #3 Firestop Sleeves | #4 Hollow Sleeves | 1¼" - 3" | 10 |
| HFPE4 | #4 Firestop Sleeves | #5 Hollow Sleeves | 2½" - 4" | 10 |
| HFPE5 | #5 Firestop Sleeves | #6 Hollow Sleeves | 3" - 5" | 2 |
| HFPE6 | #6 Firestop Sleeves | #7 Hollow Sleeves | 4" - 6" | 2 |

Sleeve Extensions for Firestop and Hollow Sleeves with Adjustable Cap (Includes Safety Cap)

| Model Number | Fits Firestop Sleeves | Fits Hollow Sleeves | Nominal Penetrant Size | Box Qty |
|--------------|-----------------------|---------------------|------------------------|---------|
| HFPESC1 | #1 Firestop Sleeves | #2 Hollow Sleeves | ¼" - 1¼" | 5 |
| HFPESC2 | #2 Firestop Sleeves | #3 Hollow Sleeves | 1" - 2" | 10 |
| HFPESC3 | #3 Firestop Sleeves | #4 Hollow Sleeves | 1¼" - 3" | 10 |
| HFPESC4 | #4 Firestop Sleeves | #5 Hollow Sleeves | 2½" - 4" | 10 |
| HFPESC5 | #5 Firestop Sleeves | #6 Hollow Sleeves | 3" - 5" | 2 |
| HFPESC6 | #6 Firestop Sleeves | #7 Hollow Sleeves | 4" - 6" | 2 |



HoldRite™ HydroFlame™ Pro Series Water Module

- Provides added water protection for HoldRite HydroFlame Pro Series Sleeves
- Prevents debris from falling into annular space around piping
- Pre-installed prior to concrete pour
- Available for all HoldRite HydroFlame Pro Series Sleeve sizes
- Adds ½" to the overall height of pro series sleeves
- Accepts safety cap and other HoldRite HydroFlame Pro Series accessories
- UL W-Rated seal, water-tight for most penetrants

| Type | UL Rating | Status |
|-------|-----------|--------|
| Water | W* | ✓ |

| Model Number | Fits Firestop Sleeves | Fits Hollow Sleeves | Nominal Penetrant Size | Box Qty |
|--------------|-----------------------|---------------------|------------------------|---------|
| HFPWM1 | #1 Firestop Sleeves | #2 Hollow Sleeves | ½" - 1" | 5 |
| HFPWM2 | #2 Firestop Sleeves | #3 Hollow Sleeves | 1¼" - 2" | 5 |
| HFPWM3 | #3 Firestop Sleeves | #4 Hollow Sleeves | 2" - 3" | 5 |
| HFPWM4 | #4 Firestop Sleeves | #5 Hollow Sleeves | 3" - 4" | 5 |
| HFPWM6 | #6 Firestop Sleeves | #7 Hollow Sleeves | 5" - 6" | 5 |

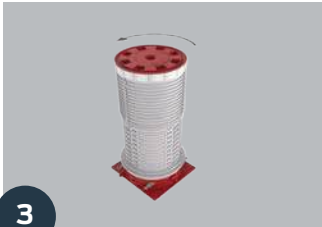
Note: Use of a water module is fully optional and not required to obtain a W rating. The mid-body seal in standard HydroFlame Pro Series sleeves already provides a UL W rating (refer to UL System data for specific sizing requirements).



1
Cut inner and outer sleeve if desired height is under 8"



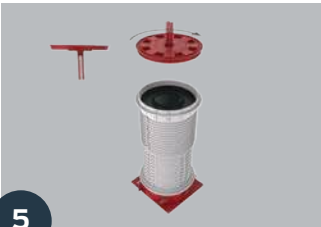
2
Lock outer sleeve in place



3
Remove cap



4
Install water module assembly



5
Re-install cap & insert whiskers



6
Install to form deck



7
Pour concrete to top of sleeve



HoldRite™ HydroFlame™ Pro Series Water Dams

- Adds 2" of overall height to the HoldRite HydroFlame Pro Series Sleeve
- Load-rated for riser clamp support – see product spec sheet
- Installed after concrete pour and safety cap removal
- Impedes water when used with cast-in-place sleeves
- Screws onto HoldRite HydroFlame Pro Series telescoping sleeves or water modules

| Model Number | Fits Firestop Sleeves | Fits Hollow Sleeves | Nominal Penetrant Size | Box Qty |
|--------------|-----------------------|---------------------|------------------------|---------|
| HFPWD1 | #1 Firestop Sleeves | #2 Hollow Sleeves | 1¼" - 1½" | 5 |
| HFPWD2 | #2 Firestop Sleeves | #3 Hollow Sleeves | 1" - 2" | 5 |
| HFPWD3 | #3 Firestop Sleeves | #4 Hollow Sleeves | 1½" - 3" | 5 |
| HFPWD4 | #4 Firestop Sleeves | #5 Hollow Sleeves | 2½" - 4" | 5 |
| HFPWD5 | #5 Firestop Sleeves | #6 Hollow Sleeves | 4" - 5" | 5 |
| HFPWD6 | #6 Firestop Sleeves | #7 Hollow Sleeves | 4" - 6" | 5 |



1

Remove cap with Safety Cap Tool or break out with hammer



2

Install 2" Water Dam. Add threaded sealant if desired



3

Install pipe



| Type | UL Rating | Status |
|-------------|-----------|--------|
| Water | W** | ✓ |
| Smoke / Gas | L | ✓ |
| Fire | F | ✓ |
| Thermal | T* | ✓ |

*T-Rating when penetrant is non-metallic
 **W Rated- refer to UL System data for specific sizing requirements.

HoldRite™ HydroFlame™ Pro Series Tub Boxes

- UL Listed firestop device for bathtub drains
- 3 hour F-Rating
- Built-in fire, smoke and gas protection
- Provides a water tight slab penetration
- Accepts 1½" PVC, ABS, cast iron, copper, and brass drain pipes using appropriate seal plug (provided with TW models)
- Allows for expansion, contraction and movement
- UL W rated water seal (Refer to UL System data for specific sizing requirements)
- Height can be modified in the field
- Tub Boxes built in pre set heights of 8, 9, and 10 inches tall
- Tub box accepts 2 or 3 inch sleeves. 3 inch sleeve allows for off center layouts and provides maximum clearance during drain installation
- Tub box has two knock-out locations to accommodate standard and exotic tub drain and overflow configurations



| Model Number | Penetrating Pipe Type | Nominal Penetrant Size | Box Qty |
|-------------------|-----------------------------|------------------------|---------|
| HFPLTB-NP-0200-8 | 1½" Nominal Pipe Size Drain | 1½" IPS | 4 |
| HFPLTB-TW-0200-8 | 1½" Thin Wall Drain | 1½" O.D. | 4 |
| HFPLTB-NP-0300-8 | 1½" Nominal Pipe Size Drain | 1½" IPS | 4 |
| HFPLTB-TW-0300-8 | 1½" Thin Wall Drain | 1½" O.D. | 4 |
| HFPLTB-NP-0200-9 | 1½" Nominal Pipe Size Drain | 1½" IPS | 4 |
| HFPLTB-TW-0200-9 | 1½" Thin Wall Drain | 1½" O.D. | 4 |
| HFPLTB-NP-0300-9 | 1½" Nominal Pipe Size Drain | 1½" IPS | 4 |
| HFPLTB-TW-0300-9 | 1½" Thin Wall Drain | 1½" O.D. | 4 |
| HFPLTB-NP-0200-10 | 1½" Nominal Pipe Size Drain | 1½" IPS | 3 |
| HFPLTB-TW-0200-10 | 1½" Thin Wall Drain | 1½" O.D. | 3 |
| HFPLTB-NP-0300-10 | 1½" Nominal Pipe Size Drain | 1½" IPS | 3 |
| HFPLTB-TW-0300-10 | 1½" Thin Wall Drain | 1½" O.D. | 3 |
| HFPTB-TW-0200 | 1½" Thin Wall Drain | 1½" O.D. | 5 |
| HFPTB-NP-0200 | 1½" Nominal Pipe Size Drain | 1½" IPS | 5 |
| HFPTB-15NP | Plastic and Metal | 1½" IPS | 10 |



1

Attach sleeve to Tub Box



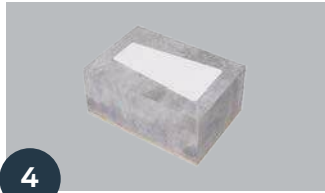
2

Install rear legs (cut to height)



3

Nail tub box to form deck



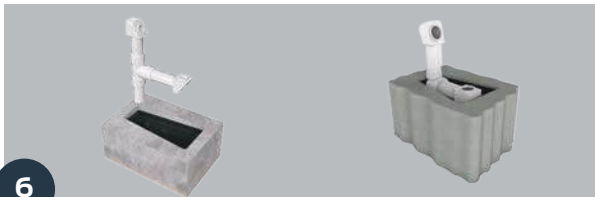
4

Pour concrete to top of tub box



5

Remove styrofoam & "knock out plug"



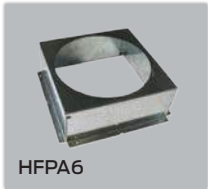
6

Slide rubber donut onto drain pipe & insert assembly through hole (Donut only required on "TW" model)



HoldRite™ HydroFlame™ Pro Series Aerator Adapter

- Provides a recess in the underside of the concrete floor, for fitting access
- Available for use with 2", 3", 4" 5" & 6" HoldRite HydroFlame Pro Series Sleeve
- For use in concrete floors as thin as 5½"
- Ideal for solvent and other high and tight fitting joint access



| Model Number | Fits Firestop Sleeves | Fits Hollow Sleeves | Nominal Penetrant Size | Height | Box Qty | Prox. Footprint |
|--------------|-----------------------|---------------------|------------------------|--------|---------|-----------------|
| HFA2 | #2 Firestop Sleeves | #3 Hollow Sleeves | ¼" - 2" | 2⅝" | 10 | 4" x 6⅛" |
| HFA3 | #3 Firestop Sleeves | #4 Hollow Sleeves | 1¼" - 3" | 2⅝" | 10 | 6" x 6⅞" |
| HFA4 | #4 Firestop Sleeves | #5 Hollow Sleeves | 2½" - 4" | 4" | 10 | 6" x 8¾" |
| HFA5 | #5 Firestop Sleeves | #6 Hollow Sleeves | 4" - 5" | 4" | 10 | 9¼" x 9" |
| HFA6 | #6 Firestop Sleeves | #7 Hollow Sleeves | 4" - 6" | 3½" | 2 | 10" x 10" |



1

Cut inner and outer sleeve as needed to account for Aerator Adapter Box height



2

Lock outer sleeve in place



3

Re-install cap & insert whiskers



4

Install Aerator Adapter Box



5

Nail to form deck



6

Pour concrete to top of sleeve



HoldRite™ HydroFlame™ Pro Series Shower Drain Sleeve

- UL Listed firestop device – 3 hour F-Rating
- For 2" shower/floor drains (Drain Not Included)
- Allows for a recessed drain body in shower pans and shower stalls
- Accepts plastic drain piping
- Adjustable height sleeve – up to 14 ¾" slab height
- Extensions available

| Type | UL Rating | Status |
|-------------|-----------|--------|
| Water | W* | ✓ |
| Smoke / Gas | L | ✓ |
| Fire | F | ✓ |

*W-Rated - refer to UL System data for specific sizing requirements

| Model Number | Penetrating Pipe Type | Nominal Penetrant Size | Box Qty |
|--------------|-----------------------|------------------------|---------|
| HFP-SH2-DRN | Plastic | 2" | 6 |
| HFP-SH3-DRN | Plastic | 2" | 6 |



1

Cut inner and outer sleeve as needed



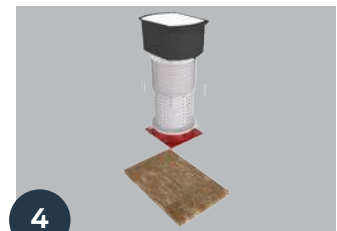
2

Lock outer sleeve in place



3

Install Aerator Adapter Box "inverted"



4

Nail to form deck



5

Pour concrete to top of Aerator Adapter Box



6

Install assembled shower pan or shower stall & shower drain with piping



HoldRite™ HydroFlame™ Pro Series Cast Iron Drain Sleeves

- UL Listed firestop device
- For no-hub cast iron drains and piping
- Mount drain body on top of sleeve and secure to deck
- For cast-in-place drains (Drain Not Included)
- For Neo-Lock style drain outlets
- Extensions available

| Type | UL Rating | Status |
|------|-----------|--------|
| Fire | F | ✓ |

| Model Number | Penetrating Pipe Type | Nominal Penetrant Size | Box Qty |
|--------------|-----------------------|------------------------|---------|
| HFP-2CI-DRN | Hubless Cast Iron | 2" | 10 |
| HFP-23CI-DRN | Hubless Cast Iron | 2" - 3" | 10 |
| HFP-34CI-DRN | Hubless Cast Iron | 3" - 4" | 10 |
| HFP-6CI-DRN | Hubless Cast Iron | 6" | 2 |



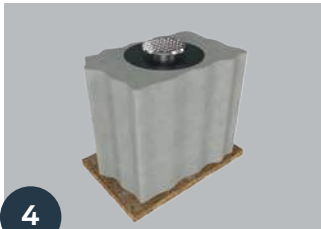
1 Adjust sleeve to desired height



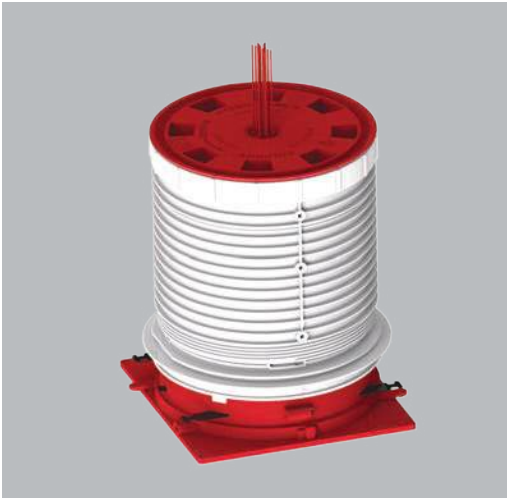
2 Secure sleeve to form deck
(shown with extension)



3 Set drain on top of sleeve



4 Pour concrete



HoldRite™ HydroFlame™ Pro Series Cable & Line-Set Sleeves

- UL Listed firestop device – 2-3 hour F-Rating
- Accepts multiple data, phone, electrical cables, fiber cables, coax, refrigeration line-sets
- Accepts cable fill up to 45%
- Accepts multiple tubing-water lines, etc.
- Some models are height adjustable
- Extensions also available

| Type | UL Rating | Status |
|-------------|-----------|--------|
| Water | W** | ✓ |
| Smoke / Gas | L | ✓ |
| Fire | F | ✓ |
| Thermal | T* | ✓ |

*T-Rating when penetrant is non-metallic

**W-Rated when used with silicone sealant

| Model Number | Penetrating Pipe Type | Nominal Penetrant Size | Box Qty |
|--------------|------------------------------|-------------------------------|---------|
| HFP-CSM2 | Cables | 45% fill max | 10 |
| HFP-CSM3 | Cables | 45% fill max | 10 |
| HFP-CSM2B | Cables | 45% fill max | 10 |
| HFP-CSM3B | Cables | 45% fill max | 10 |
| HFP-LSP3 | Line-sets and multiple pipes | Various, including insulation | 10 |
| HFP-LSP3B | Line-sets and multiple pipes | Various, including insulation | 10 |



1

Adjust sleeve to desired height



2

Secure sleeve to form deck with cap installed



3

Pour concrete



4

Remove safety cap



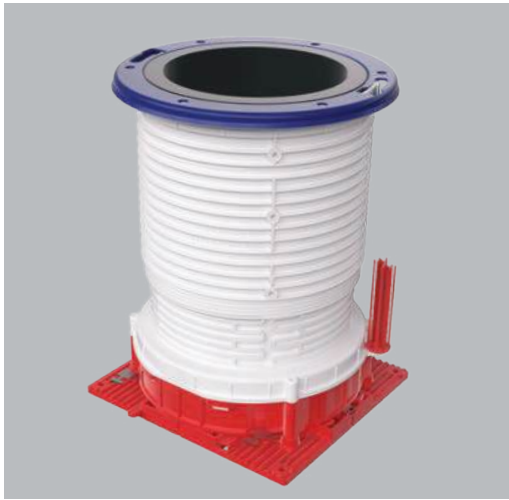
5

Insert cable(s)



6

Install mineral wool & caulk



HoldRite™ HydroFlame™ Pro Series Closet Flange Sleeves

- UL Listed firestop device – 3 hour F-Rating
- Models for 3" or 4" toilet flanges (Flanges not included)
- For both plastic and no-hub cast iron drain piping
- Mid-body seal provides water-tight penetration
- Adjustable height sleeve up to 12"
- Extensions are available for slabs over 12"

| Type | UL Rating | Status |
|-------------|-----------|--------|
| Water | W** | ✓ |
| Smoke / Gas | L | ✓ |
| Fire | F | ✓ |
| Thermal | T* | ✓ |

*T-Rating when penetrant is non-metallic

**W-Rated - refer to UL System data for specific sizing requirements

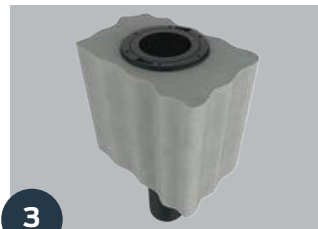
| Model Number | Penetrating Pipe Type | Nominal Penetrant Size | Box Qty |
|--------------|-----------------------|------------------------|---------|
| HFP-CF3PL | Plastic or Cast Iron | 3" | 10 |
| HFP-CF4PL | Plastic or Cast Iron | 3" - 4" | 10 |
| HFP-CF3NH | Cast Iron | 3" | 10 |
| HFP-CF4NH | Cast Iron | 3" - 4" | 10 |



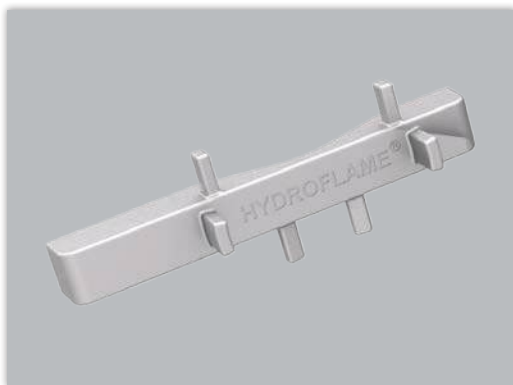
1
Remove cap with Safety Cap Tool
or break out with hammer



2
Insert plastic or cast iron
Closet Flange and pipe



3
Attach Closet Flange to floor

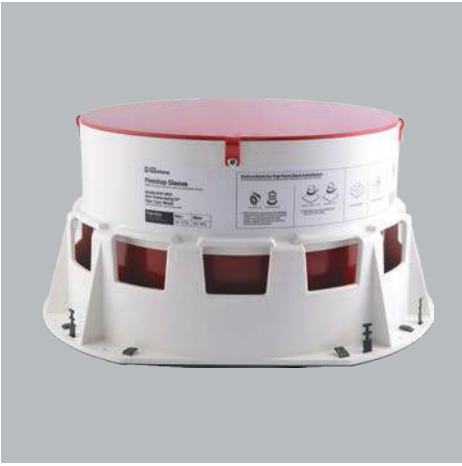


HoldRite™ HydroFlame™ Pro Series Safety Cap Tool

- Easy to use forged steel, nickel plated, hand tool
- For removal of HoldRite HydroFlame Pro Series Safety Caps
- Multi-purpose wrench works with all sizes of the HoldRite HydroFlame Pro Series Safety Caps
- Use manually, or strike with a hammer



| Model Number | Qty |
|--|-----|
| HFPT For removal of all size safety caps (1" - 6") | 1 |



HoldRite™ HydroFlame™ Large Diameter Firestopping Sleeves

- Ideal for metallic, plastic and insulated pipes ranging from 8" - 12"
- For use with slabs 6" or thicker
- Provides 3 hour fire rating for slabs thicker than 6"
- Includes an OSHA-compliant hole cover plate/safety cap
- 1" extensions available for thicker floor slabs
- W-rating achievable with silicone caulking
- Standard sleeve height is 8" tall and field modifications can be made down to 6" tall
- Provides 3 hour T ratings for plastic pipe penetrants

| Model Number | Penetrating Pipe Type | Nominal Penetrant Size | Box Qty |
|--------------|-----------------------|------------------------|---------|
| HF-P8 | Plastic and Metal | 8" CTS - 8" IPS | 1 |
| HF-P10 | Plastic and Metal | 10" CTS - 10" IPS | 1 |
| HF-P12 | Plastic and Metal | 12" CTS - 12" IPS | 1 |
| HF-M8 | Metal | 8" CTS - 8" IPS | 1 |
| HF-M10 | Metal | 10" CTS - 10" IPS | 1 |
| HF-M12 | Metal | 12" CTS - 12" IPS | 1 |



HoldRite™ HydroFlame™ Large Diameter Hollow Sleeves

- Ideal for metallic, plastic and insulated pipes ranging from 8" - 12"
- For use with slabs 6" or thicker
- Includes an OSHA-compliant hole cover plate/safety cap
- 1" extensions available for thicker floor slabs
- W-rating achievable with silicone caulking
- Firestopping for metallic and insulated metallic piping achieved by using mineral wool and HydroFlame Firestop Sealants

| Model Number | Penetrating Pipe Type | Nominal Penetrant Size | Box Qty |
|--------------|-----------------------|------------------------|---------|
| HF-H10 | Metal | 6" CTS - 8" IPS | 1 |
| HF-H12 | Metal | 8" CTS - 10" IPS | 1 |
| HF-H14 | Metal | 10" CTS - 12" IPS | 1 |



HoldRite™ HydroFlame™ Large Diameter Extensions

- Provides height extensions in 1" increments
- Two extensions can be combined to form a water dam
- Includes built in Riser Clamp Bearing Plate

| Model Number | Fits Firestop Sleeves | Fits Hollow Sleeves | Nominal Penetrant Size | Box Qty |
|--------------|-----------------------|---------------------|------------------------|---------|
| HFEXT81 | #8 Firestop Sleeve | #10 Hollow Sleeve | 6" CTS - 8" IPS | 2 |
| HFEXT101 | #10 Firestop Sleeve | #12 Hollow Sleeve | 8" CTS - 10" IPS | 2 |
| HFEXT121 | #12 Firestop Sleeve | #14 Hollow Sleeve | 10" CTS - 12" IPS | 2 |

HoldRite™ HydroFlame™ Pro Series Telescoping Electrical Firestop Sleeves

- Eliminate the need to cut sleeves on the jobsite
- Adjust sleeve to desired height 2 ½" to 11 ¾"
- Extension sleeves available for greater than 11 ¾"
- Accommodates various pipe, conduit and cable types and sizes ½" to 6"
- Firestop sleeve with adjustable cap design also available at 7 ¼" to 8" tall
- Faster install over traditional methods or other manufactured designs
- Measurement guide system built into sleeves (US and Metric)
- Significantly reduces the number of SKU's required to stock shelves or complete job
- Green base color makes electrical penetrations easy to identify from other trade penetrations



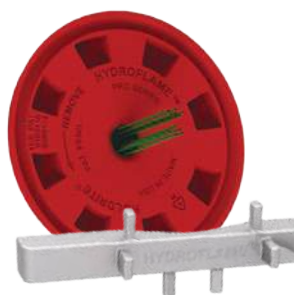
HoldRite™ HydroFlame™ Pro Series Locator Whiskers

- Easily locate buried sleeves after concrete pour
- Green whiskers also available to identify electrical penetrations
- Comes standard with green whiskers to quickly identify and find electrical pipe and cable penetrations



HoldRite™ HydroFlame™ Pro Series Safety Cap

- Adjustable cap can be removed by using hammer or screwdriver
- Both caps meet OSHA hole cover safety requirements
- Adjustable cap provides sleeve heights from 7 ¼" to 8" in ¼" increments



Telescoping Sleeve Cap
and Safety Cap Tool



Adjustable Cap
(Knock Out)

HoldRite™ HydroFlame™ Pro Series Interlocking Nail-in Base

- Ideal for alignment layout and tight install locations
- Fast and easy installation
- Quickly identify plastic or metal conduits, cables and cable bundles penetrations (green colored base)





| Type | UL Rating | Status |
|-------------|-----------|--------|
| Water | W** | ✓ |
| Smoke / Gas | L | ✓ |
| Fire | F | ✓ |
| Thermal | T* | ✓ |

*T-Rating when penetrant is non-metallic

**W-Rated- Refer to UL System data for specific sizing requirements

HoldRite™ HydroFlame™ Pro Series Telescoping Electrical Firestop Sleeves

- Ideal for flat concrete form decks – cast-in-place
- Ideal for corrugated metal decks (corrugated deck plate required)
- Available for ½" to 6" penetrants – conduit, cables, etc.
- For plastic/metal conduits, cables, and cable bundles
- Telescoping design adjusts from 7½" to 11¾", in ¼" increments
- Cut to as short as 2½"
- Green base and green locator whiskers easily identifies electrical trade penetrations from other on-site trade penetrations
- Dimensions on sleeves allows for simple height adjustments
- Safety caps meet OSHA hole cover requirements
- Refer to UL System data for specific sizing requirements
- Meets and/or exceeds building code requirements
- Built in fire, smoke, gas and water protection
- UL W-Rated seal, water-tight for most penetrants (Refer to UL System data for specific sizing requirements)
- Allows for contraction, expansion, movement and off-center penetrants
- Reduces piping system noise transfer by maintaining annular spacing
- Interlocking base capability assists with layout alignment
- Extensions available for slabs over 11¾" thick
- A variety of accessories are available
- UL 50 Pa Ratings
- Tested to ASTM E814, UL 1479, and CAN/ULC S115 testing standards

| Model Number | Penetrating Pipe Type | Nominal Penetrant Size | Box Qty |
|--------------|---|------------------------|---------|
| HFP-G1 | plastic/metal conduits and cables/cable bundles | ½" - 1" | 10 |
| HFP-G2 | plastic/metal conduits and cables/cable bundles | 1¼" - 2" | 10 |
| HFP-G3 | plastic/metal conduits and cables/cable bundles | 2" - 3" | 10 |
| HFP-G4 | plastic/metal conduits and cables/cable bundles | 3" - 4" | 10 |
| HFP-G5 | plastic/metal conduits and cables/cable bundles | 4" - 5" | 2 |
| HFP-G6 | plastic/metal conduits and cables/cable bundles | 5" - 6" | 2 |



1
Cut inner and outer sleeve
if desired height is less than 8"



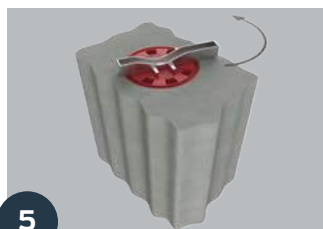
2
Lock outer sleeve in place



3
Re-install cap & insert whiskers



4
Nail to form deck



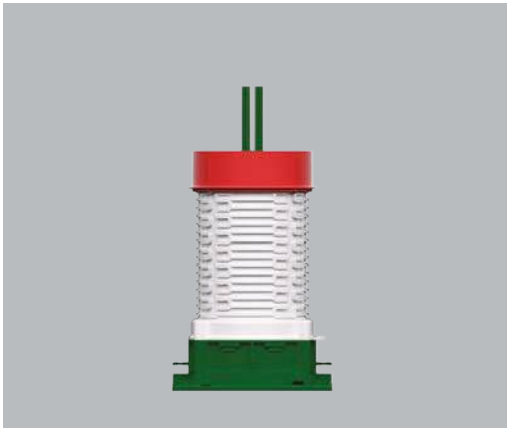
5
Remove cap with Safety Cap Tool
or break out with hammer



6
Install pipe



7
Insert Cable(s)



HoldRite™ HydroFlame™ Pro Series Electrical Firestop Sleeve with Adjustable Cap

- Ideal for flat concrete form decks – cast-in-place
- Ideal for corrugated metal decks (corrugated deck plate required)
- Available for ½" to 6" penetrants, piping, conduits, cables, etc.
- For plastic/metal conduits, cables, and cable bundles
- The firestop sleeve with adjustable cap is 7¼" to 8" tall in ¼" increments
- The sleeve is set at 8" tall in the factory
- Green base and green locator whiskers easily identifies electrical trade penetrations from other on-site trade penetrations
- Dimensions on sleeve allows for simple height adjustment when cutting
- Safety caps meet OSHA hole cover requirements
- UL Listed firestop devices (2 or 3 hour F-ratings)
- Meets and/or exceeds building code requirements
- Built in fire, smoke, gas and water protection
- UL W-Rated seal, water-tight for most penetrants (Refer to UL System data for specific sizing requirements)
- Allows for contraction, expansion, movement and off-center pipes
- Reduces piping system noise transfer by maintaining annular spacing
- Interlocking base capability assists with layout alignment
- A variety of accessories are available
- UL 50 Pa Ratings
- Tested to ASTM E814, UL 1479, and CAN/ULC S115 testing standards
- Field modifications can be made down to 3-1/2 inches

| Type | UL Rating | Status |
|-------------|-----------|--------|
| Water | W** | ✓ |
| Smoke / Gas | L | ✓ |
| Fire | F | ✓ |
| Thermal | T* | ✓ |

*T-Rating when penetrant is non-metallic

**W-Rated- Refer to UL System data for specific sizing requirements

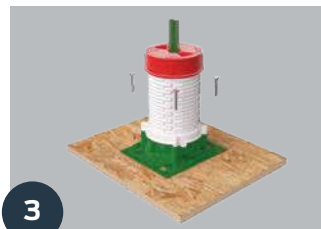
| Model Number | Penetrating Pipe Type | Nominal Penetrant Size | Box Qty |
|--------------|---|------------------------|---------|
| HFP-G1B | plastic/metal conduits and cables/cable bundles | ½" - 1" | 10 |
| HFP-G2B | plastic/metal conduits and cables/cable bundles | 1¼" - 2" | 10 |
| HFP-G3B | plastic/metal conduits and cables/cable bundles | 2" - 3" | 10 |
| HFP-G4B | plastic/metal conduits and cables/cable bundles | 3" - 4" | 10 |
| HFP-G5B | plastic/metal conduits and cables/cable bundles | 4" - 5" | 2 |
| HFP-G6B | plastic/metal conduits and cables/cable bundles | 5" - 6" | 2 |



Adjustable Cap



Insert whiskers



Nail to form deck



Pour concrete



Knock out safety cap with hammer or screwdriver



Install pipe



Insert Cable(s)

HoldRite™ HydroFlame™ Pro Series

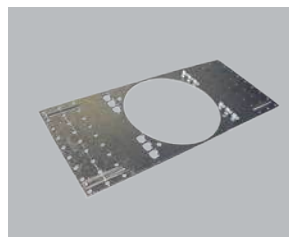
Product & Services Directory



Telescoping Firestop Sleeves
Page 36



Firestop Sleeves with Adjustable Cap Page 37



Corrugated Metal Deck Plates
Page 40



Sleeve Extensions
Page 41



Safety Cap Tool
Page 49



Telescoping Electrical Firestop Sleeves
Page 53



Electrical Firestop Sleeve with Adjustable Cap Page 54



Specifications
Page 57



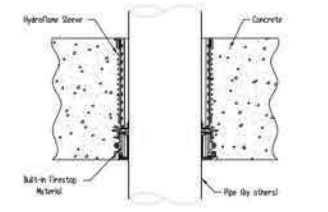
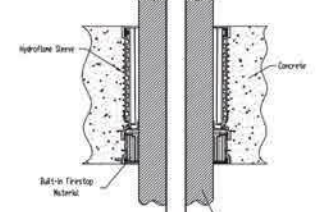
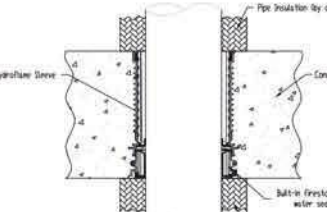
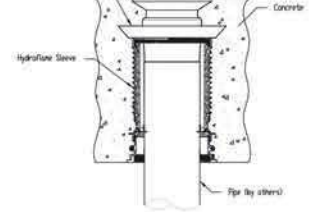
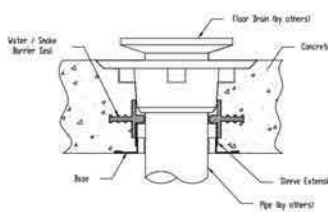
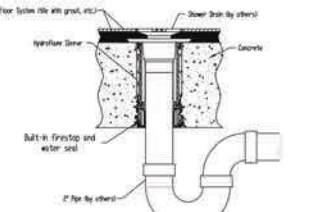
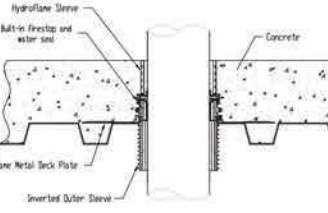
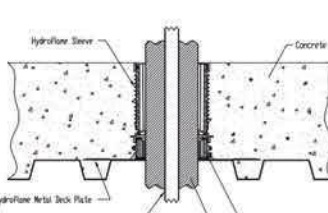
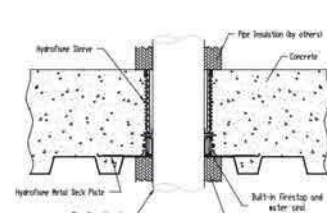
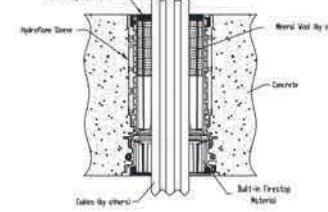
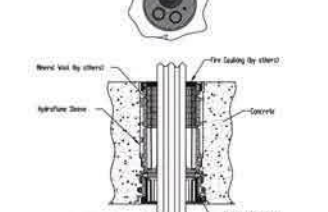
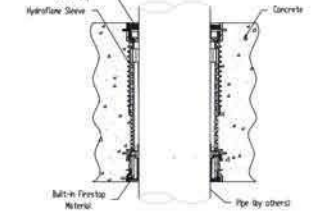
Index
Page 66



Specifications

HoldRite™ HydroFlame™ Pro Series

Installation Details Page

| | | |
|--|---|--|
| <p>1</p>  <p>STANDARD CONCRETE DECK SLEEVE CAST-IN-PLACE SLEEVE</p> <p>SHOWN WITH HOLDRITE® HYDROFLAME™ PRO SERIES CAST-IN-PLACE FIRESTOP SLEEVE. THIS SLEEVE CAN BE USED FOR A WIDE VARIETY OF PIPE MATERIALS UP TO 6" DIAMETER, DEPENDING ON PIPE TYPE. SEE UL FIRE RESISTANCE DIRECTORY FOR DETAILS.</p> | <p>2</p>  <p>STANDARD CONCRETE DECK SLEEVE CAST-IN-PLACE SLEEVE FOR INSULATED PIPES</p> <p>THE HOLDRITE® HYDROFLAME™ PRO SERIES SLEEVE PROVIDES A UL LISTED FIRESTOP SOLUTION, AVAILABLE FOR A VARIETY OF PIPE MATERIALS UP TO 4" DIAMETER, DEPENDING ON PIPE TYPE. SEE UL FIRE RESISTANCE DIRECTORY FOR DETAILS.</p> | <p>3</p>  <p>STANDARD CONCRETE DECK SLEEVE CAST-IN-PLACE SLEEVE FOR INSULATED PIPES</p> <p>THE HOLDRITE® HYDROFLAME™ PRO SERIES SLEEVE PROVIDES A UL LISTED FIRESTOP SOLUTION, AVAILABLE FOR A VARIETY OF PIPE MATERIALS UP TO 6" DIAMETER, DEPENDING ON PIPE TYPE. SEE UL FIRE RESISTANCE DIRECTORY FOR DETAILS.</p> |
| <p>6</p>  <p>STANDARD CONCRETE DECK SLEEVE with CAST IRON DRAIN CAST-IN-PLACE SLEEVE</p> <p>SHOWN WITH HOLDRITE® HYDROFLAME™ PRO SERIES CAST-IN-PLACE FIRESTOP SLEEVE WITH CAST IRON DRAIN KIT. THIS SLEEVE CAN BE USED FOR A WIDE VARIETY OF PIPE MATERIALS UP TO 6" DIAMETER, DEPENDING ON PIPE TYPE. SEE UL FIRE RESISTANCE DIRECTORY FOR DETAILS.</p> | <p>7</p>  <p>FLOOR DRAIN KIT CAST-IN-PLACE SLEEVE & DRAIN SUPPORT</p> <p>THE HOLDRITE® HYDROFLAME™ FLOOR DRAIN KIT PROVIDES EXCELLENT SUPPORT FOR CAST IRON FLOOR DRAINS ALONG WITH A WATER PROOF SEAL. (2", 3" & 4" NEO LOCK DRAIN BODIES)</p> | <p>8</p>  <p>2" PLASTIC FLOOR DRAIN SLEEVE CAST-IN-PLACE FIRESTOP DEVICE</p> <p>THE HOLDRITE® HYDROFLAME™ PRO SERIES SHOWER DRAIN SLEEVE PROVIDES A UL LISTED FIRESTOP SOLUTION FOR 2" DRAIN BODIES. SEE UL FIRE RESISTANCE DIRECTORY FOR DETAILS. (DRAIN BODY AND PIPES BY OTHERS)</p> |
| <p>11</p>  <p>CORRUGATED DECK SLEEVE CAST-IN-PLACE SLEEVE</p> <p>SHOWN WITH HOLDRITE® HYDROFLAME™ PRO SERIES CAST-IN-PLACE FIRESTOP SLEEVE. THIS SLEEVE CAN BE USED FOR A WIDE VARIETY OF PIPE MATERIALS UP TO 6" DIAMETER, DEPENDING ON PIPE TYPE. SEE UL FIRE RESISTANCE DIRECTORY FOR DETAILS.</p> | <p>12</p>  <p>CORRUGATED METAL DECK FIRESTOP DEVICE CAST-IN-PLACE SLEEVE FOR INSULATED PIPES</p> <p>THE HOLDRITE® HYDROFLAME™ PRO SERIES SLEEVE PROVIDES A UL LISTED FIRESTOP SOLUTION, AVAILABLE FOR A VARIETY OF PIPE MATERIALS UP TO 4" DIAMETER, DEPENDING ON PIPE TYPE. SEE UL FIRE RESISTANCE DIRECTORY FOR DETAILS.</p> | <p>13</p>  <p>CORRUGATED METAL DECK FIRESTOP SLEEVE CAST-IN-PLACE SLEEVE FOR INSULATED PIPES</p> <p>THE HOLDRITE® HYDROFLAME™ PRO SERIES SLEEVE PROVIDES A UL LISTED FIRESTOP SOLUTION, AVAILABLE FOR A VARIETY OF PIPE MATERIALS UP TO 6" DIAMETER, DEPENDING ON PIPE TYPE. SEE UL FIRE RESISTANCE DIRECTORY FOR DETAILS.</p> |
| <p>16</p>  <p>CABLE SLEEVE CAST-IN-PLACE SLEEVE</p> <p>THE HOLDRITE® HYDROFLAME™ PRO SERIES CABLE SLEEVE IS ATTACHED TO A WOOD FORM DECK PRIOR TO POUR AND PROVIDES A UL RATED FIRESTOP SYSTEM SOLUTION WHEN COMBINED WITH MINERAL WOOL PACKING. SEE UL FIRE RESISTANCE DIRECTORY FOR DETAILS.</p> | <p>17</p>  <p>REFRIGERATION LINE-SET SLEEVE OR MULTI-PIPE SLEEVE CAST-IN-PLACE SLEEVE</p> <p>THE HOLDRITE® HYDROFLAME™ PRO SERIES "LINE-SET" FIRESTOP SLEEVE IS A UL LISTED FIRESTOP DEVICE FOR USE WITH LINE-SET PIPING AND TUBING OR FOR CABLES PASSING THROUGH A CONCRETE SLAB FLOOR. SEE UL FIRE RESISTANCE DIRECTORY FOR DETAILS.</p> | <p>18</p>  <p>STANDARD CONCRETE DECK SLEEVE with WATER MODULE CAST-IN-PLACE SLEEVE</p> <p>SHOWN WITH HOLDRITE® HYDROFLAME™ PRO SERIES CAST-IN-PLACE FIRESTOP SLEEVE WITH WATER MODULE ASSEMBLY. THIS SLEEVE CAN BE USED FOR A WIDE VARIETY OF PIPE MATERIALS UP TO 6" DIAMETER, DEPENDING ON PIPE TYPE. SEE UL FIRE RESISTANCE DIRECTORY FOR DETAILS.</p> |

**Download HoldRite CSI Division 7 and Division 22 Specifications at
HoldRite.com/no-charge-specification-authorship/**



**HoldRite™ is proud to be an ASPE
affiliate sponsor and CEU provider**



HoldRite now offers the opportunity for plumbing engineers and designers to earn continuing education units (CEUs) for participation in our ASPE approved educational programs. Topics include plumbing acoustical isolation, pipe hangers and supports, and firestop systems. The CEUs can be earned by scheduling a Lunch and Learn at your business location or by attending one of our scheduled webinars.

Access HoldRite's Comprehensive Building Information Modeling (BIM) Library



Attention, contractors and engineers, in collaboration with Thomas For Industry, we've updated our Building Information Modeling (BIM) Library. HoldRite is a brand professionals trust for quality, reliability and performance. Providing the best digital experience has become one of the most important ways to support our customers. As our customers accelerate adoption of BIM (Building Information Modeling) for commercial building projects, getting the RIGHT data in the RIGHT format like Revit, Bentley or CADmep becomes ever more important.

The updated HoldRite BIM Online catalog provides a wide variety of CAD and BIM formats to select from – over 25 unique formats all ready for immediate download directly into your project file.


Download our BIM Library at bim.holdrite.com



FBC™ System Compatible indicates that this products has been tested, and is monitored on an ongoing basis, to assure its chemical compatibility with FlowGuard Gold™, BlazeMaster™ and Corzan™ piping systems and products made with TempRite™ Technology.

The FBC Compatible Logo, FBC™, FlowGuard Gold™, BlazeMaster™, Corzan™, and TempRite™ are trademarks of Lubrizol Advanced Materials Inc. or its affiliates.



 HydroFlame

Firestop Sleeve

Model #HF-P8 Non-Telescoping 8" Pipe Type: Plastic/Metal

Model #HF-P8
Non-Telescoping 8"

Pipe Type: Plastic/Metal

Pipe Size

Dimension du tuyau
Dimensione del tubo

Min:

8" CTS

Max:

8" IPS

Instructions for Flat Form Deck Installation

Instructions for Flat Form Deck Installation



1. Measure and cut the sleeve to the desired length. If less than 12 inches, use the 12 inch length. If more than 12 inches, use the 12 inch length. Apply PVC solvent to the sleeve and the hole.

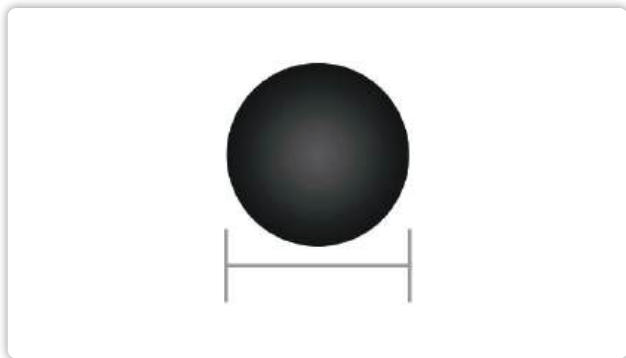


2. Remove the sleeve and the strap.

HoldRite™ HydroFlame™ Online Tools

HydroFlame Deck Hole Penetration Calculator

CORRUGATED SLEEVE Deck Hole Cutout



| PIPE SIZE | "PRO SERIES" HOLE CUT SIZE |
|-----------|----------------------------|
| 1/2" | 2 3/4" |
| 3/4" | 2 3/4" |
| 1" | 2 3/4" |
| 1 1/4" | 4" |
| 1 1/2" | 4" |
| 2" | 4" |
| 2 1/2" | 5" |
| 3" | 5" |
| 4" | 6" |
| 6" | 8 1/4" |

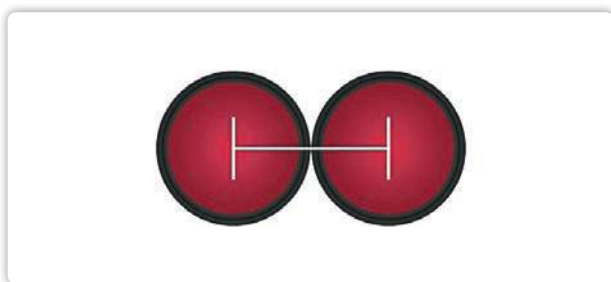
Center-to-Center Calculator

Use our online calculator:

<https://holdrite.com/hydroflame-custom-built-deck-hole-penetration-calculator/>

A screenshot of a web form titled "Hole Penetration Calculator". It contains three dropdown menus: "SELECT A DECK TYPE" (with "Please select a value" selected), "SELECT THE FIRST MODEL", and "SELECT THE SECOND MODEL". Below these is a "Calculate" button.

SLEEVE NESTING | Center-to-Center



HoldRite HydroFlame Firestop Submittal Generator

HoldRite's HydroFlame Submittal Generator makes compiling a submittal package of HoldRite engineered solutions fast and easy. To get started, simply create a User Account using the short form below, log in and complete the required fields. Next, select the desired product categories, and click "Generate." A submittal package in PDF format will be generated instantly and saved in your account.

holdrite.com/submittals/

A screenshot of a web form titled "USER ACCOUNT". It has links for "SIGN IN", "CREATE ACCOUNT", and "RESET PASSWORD". Below these is a "Sign in to User Account" section with fields for "E-Mail", "Password", and "Captcha". The captcha shows the number "6554". There is a "remember me" checkbox and a "Sign in" button.

CONTACT US

Have questions or comments?

Need samples, additional product data or a price quote?

Reach out to us by phone, fax or email.

Our dedicated Customer Support Team is ready to help.

We look forward to working with you.

Phone: 877-700-4242 | **Fax:** 877-700-4280

holdrite.com | customerservice@rwc.com





HydroFlame

Firestop Sleeve

Model #HFP-P2B
Non-Telescoping 7 1/4" - 8"

Pipe Type: Plastic/Metal

Type De Ligne: Plastique/Metall, Type De Ligne: Plastique/Metall

Pipe Size

Calibre de tuberia

Calibre de tuberia

Min:

1-1/4"

Max:

2"

R2501



UL LISTINGS VISIT

www.HoldRite.com/hydroflame-firestop-ul-listings/



Sealants, Wraps, Collars & Pads



Sealants
Page 20



Putty Pads
Page 24



Pipe Collars
Page 23



Wrap Strips
Page 25



Caulking Guns
Page 26



Pro Series Firestop Solutions



Telescoping Firestop Sleeves
Page 36



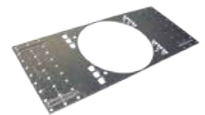
Firestop Sleeves with
Adjustable Cap
Page 37



Telescoping Hollow
Sleeves (Sleeve Only)
Page 38



Hollow Sleeves with Adjustable
Cap (Sleeve Only)
Page 39



Corrugated Metal Deck Plates
Page 40



Sleeve Extensions
Page 31



Water Modules
Page 42



Water Dams
Page 43



Tub Boxes
Page 44



Aerator Adaptors
Page 45



Shower Drain Sleeves
(Shower Drain not included)
Page 46



Cast Iron Drain Sleeves
(Cast Iron Drain not included)
Page 47



Cable & Line Set Sleeves
Page 48



Closet Flange Sleeves
(Closet Flange not included)
Page 49



Safety Cap Tool
Page 49



Large Diameter
Firestopping Sleeves
Page 50



Large Diameter
Hollow Sleeves
Page 50



Large Diameter
Sleeve Extensions
Page 51



Telescoping Electrical
Firestop Sleeves
Page 54



Electrical Firestop Sleeve
with Adjustable Cap
Page 55



APPENDIX

| Model # | Product Description | Page(s) |
|-----------------|---|---------|
| HF50S-20S | Smoke & Acoustic Sealant (White) , 20.2 oz. Sausage | 20 |
| HF100-10C | Firestop Sealant (Red), 10.3 oz. Cartridge | 21 |
| HF100-20S | Firestop Sealant (Red), 20.2 oz. Sausage | 21 |
| HF100-30C | Firestop Sealant (Red), 30 oz. Cartridge | 21 |
| HF100-5B | Firestop Sealant (Red), 10.3 oz. 5 Gal. | 21 |
| HF200-10C | Firestop Sealant (Red), 10.3 oz. Cartridge | 22 |
| HF200-20S | Firestop Sealant (Red), 20.2 oz. Sausage | 22 |
| HF200-30C | Firestop Sealant (Red), 30 oz. Cartridge | 22 |
| HF200-5B | Firestop Sealant (Red), 10.3 oz. 5 Gal. | 22 |
| HF-PC-0150 | Pipe Collar, 1½" | 23 |
| HF-PC-0200 | Pipe Collar, 2" | 23 |
| HF-PC-0300 | Pipe Collar, 3" | 23 |
| HF-PC-0400 | Pipe Collar, 4" | 23 |
| HF-PC-0600 | Pipe Collar, 6" | 23 |
| HF-PP-1 | Putty Pad, 7" x 7" x ⅛ | 24 |
| HF-PP-2 | Putty Pad, 9" x 9" x ⅛ | 24 |
| HF-WS14-0100 | Wrap Strips, 1" x 12' Roll | 25 |
| HF-WS14-0200-36 | Wrap Strips, 2" x 12' Roll | 25 |
| HF-CC-0100 | Custom Wrap Strip, 1" x 50' Roll | 25 |
| HF-CC-0200 | Custom Wrap Strip, 2" x 50' Roll | 25 |
| HF-CG-20SP | Premium Caulk Gun, 20 oz. | 26 |
| HF-CG-20SE | Economy Caulk Gun, 20 oz. | 26 |
| HF-CG-32B | Bulk Loading Caulk Gun, 32 oz. | 26 |
| HF-FP-5 | Bulk Loading Follow Plates, 5 Gal. | 26 |
| HF-CG-T20 | Replacement Tips (Cone). 20 oz. | 26 |
| HF-CG-T32 | Replacement Tips (Cone), 32 oz. | 26 |

| Model # | Product Description | Penetrant Pipe Size | Page(s) |
|-----------|---|---------------------|---------|
| HFP-P1 | HoldRite HydroFlame Pro Series Telescoping Firestop Sleeves (8"-12") | 1/2" - 1" | 36 |
| HFP-P2 | HoldRite HydroFlame Pro Series Telescoping Firestop Sleeves (8"-12") | 1-1/4" - 2" | 36 |
| HFP-P3 | HoldRite HydroFlame Pro Series Telescoping Firestop Sleeves (8"-12") | 2" - 3" | 36 |
| HFP-P4 | HoldRite HydroFlame Pro Series Telescoping Firestop Sleeves (8"-12") | 3" - 4" | 36 |
| HFP-P5 | HoldRite HydroFlame Pro Series Telescoping Firestop Sleeves (8"-12") | 4" - 5" | 36 |
| HFP-P6 | HoldRite HydroFlame Pro Series Telescoping Firestop Sleeves (8"-12") | 5" - 6" | 36 |
| HFP-M1 | HoldRite HydroFlame Pro Series Telescoping Firestop Sleeves (8"-12") | 1/2" - 1" | 36 |
| HFP-M2 | HoldRite HydroFlame Pro Series Telescoping Firestop Sleeves (8"-12") | 1-1/4" - 2" | 36 |
| HFP-M3 | HoldRite HydroFlame Pro Series Telescoping Firestop Sleeves (8"-12") | 2" - 3" | 36 |
| HFP-M4 | HoldRite HydroFlame Pro Series Telescoping Firestop Sleeves (8"-12") | 3" - 4" | 36 |
| HFP-M5 | HoldRite HydroFlame Pro Series Telescoping Firestop Sleeves (8"-12") | 4" - 5" | 36 |
| HFP-M6 | HoldRite HydroFlame Pro Series Telescoping Firestop Sleeves (8"-12") | 5" - 6" | 36 |
| HFP-P1B | HoldRite HydroFlame Pro Series Adjustable Cap Firestop Sleeves (7-3/4") | 1/2" - 1" | 37 |
| HFP-P2B | HoldRite HydroFlame Pro Series Adjustable Cap Firestop Sleeves (7-3/4") | 1-1/4" - 2" | 37 |
| HFP-P3B | HoldRite HydroFlame Pro Series Adjustable Cap Firestop Sleeves (7-3/4") | 2" - 3" | 37 |
| HFP-P4B | HoldRite HydroFlame Pro Series Adjustable Cap Firestop Sleeves (7-3/4") | 3" - 4" | 37 |
| HFP-P5B | HoldRite HydroFlame Pro Series Adjustable Cap Firestop Sleeves (7-3/4") | 4" - 5" | 37 |
| HFP-P6B | HoldRite HydroFlame Pro Series Adjustable Cap Firestop Sleeves (7-3/4") | 5" - 6" | 37 |
| HFP-M1B | HoldRite HydroFlame Pro Series Adjustable Cap Firestop Sleeves (7-3/4") | 1/2" - 1" | 37 |
| HFP-M2B | HoldRite HydroFlame Pro Series Adjustable Cap Firestop Sleeves (7-3/4") | 1-1/4" - 2" | 37 |
| HFP-M3B | HoldRite HydroFlame Pro Series Adjustable Cap Firestop Sleeves (7-3/4") | 2" - 3" | 37 |
| HFP-M4B | HoldRite HydroFlame Pro Series Adjustable Cap Firestop Sleeves (7-3/4") | 3" - 4" | 37 |
| HFP-M5B | HoldRite HydroFlame Pro Series Adjustable Cap Firestop Sleeves (7-3/4") | 4" - 5" | 37 |
| HFP-M6B | HoldRite HydroFlame Pro Series Adjustable Cap Firestop Sleeves (7-3/4") | 5" - 6" | 37 |
| HFP-H2 | HoldRite HydroFlame Pro Series Telescoping Hollow Sleeves 8"-12" | 1/4" - 1 1/4" | 38 |
| HFP-H3 | HoldRite HydroFlame Pro Series Telescoping Hollow Sleeves 8"-12" | 1" - 2" | 38 |
| HFP-H4 | HoldRite HydroFlame Pro Series Telescoping Hollow Sleeves 8"-12" | 1-1/4" - 3" | 38 |
| HFP-H5 | HoldRite HydroFlame Pro Series Telescoping Hollow Sleeves 8"-12" | 2-1/2" - 4" | 38 |
| HFP-H6 | HoldRite HydroFlame Pro Series Telescoping Hollow Sleeves 8"-12" | 3" - 5" | 38 |
| HFP-H7 | HoldRite HydroFlame Pro Series Telescoping Hollow Sleeves 8"-12" | 4" - 6" | 38 |
| HFP-H2B | HoldRite HydroFlame Pro Series Adjustable Cap Hollow Sleeves 7-3/4" | 1/4" - 1 1/4" | 39 |
| HFP-H3B | HoldRite HydroFlame Pro Series Adjustable Cap Hollow Sleeves 7-3/4" | 1" - 2" | 39 |
| HFP-H4B | HoldRite HydroFlame Pro Series Adjustable Cap Hollow Sleeves 7-3/4" | 1-1/4" - 3" | 39 |
| HFP-H5B | HoldRite HydroFlame Pro Series Adjustable Cap Hollow Sleeves 7-3/4" | 2-1/2" - 4" | 39 |
| HFP-H6B | HoldRite HydroFlame Pro Series Adjustable Cap Hollow Sleeves 7-3/4" | 3" - 5" | 39 |
| HFP-H7B | HoldRite HydroFlame Pro Series Adjustable Cap Hollow Sleeves 7-3/4" | 4" - 6" | 39 |
| HFPCD1 | HoldRite HydroFlame Pro Series Corrugated Metal Deck Plates | 1/4" - 1-1/4" | 40 |
| HFPCD2 | HoldRite HydroFlame Pro Series Corrugated Metal Deck Plates | 1" - 2" | 40 |
| HFPCD3 | HoldRite HydroFlame Pro Series Corrugated Metal Deck Plates | 1-1/4" - 3" | 40 |
| HFPCD4 | HoldRite HydroFlame Pro Series Corrugated Metal Deck Plates | 2-1/2" - 4" | 40 |
| HFPCD5 | HoldRite HydroFlame Pro Series Corrugated Metal Deck Plates | 3" - 5" | 40 |
| HFPCD6 | HoldRite HydroFlame Pro Series Corrugated Metal Deck Plates | 4" - 6" | 40 |
| HFPCD6-DC | HoldRite HydroFlame Pro Series Corrugated Metal Deck Plates | 4" - 6" | 40 |
| HFPE1 | HoldRite HydroFlame Pro Series Extension Sleeves, Telescoping | 1/4" - 1-1/4" | 41 |

| Model # | Product Description | Penetrant Pipe Size | Page(s) |
|-------------------|--|---------------------|---------|
| HFPE2 | HoldRite HydroFlame Pro Series Extension Sleeves, Telescoping | 1" - 2" | 41 |
| HFPE5 | HoldRite HydroFlame Pro Series Extension Sleeves, Telescoping | 1-1/4" - 3" | 41 |
| HFPE4 | HoldRite HydroFlame Pro Series Extension Sleeves, Telescoping | 2-1/2" - 4" | 41 |
| HFPE5 | HoldRite HydroFlame Pro Series Extension Sleeves, Telescoping | 3" - 5" | 41 |
| HFPE6 | HoldRite HydroFlame Pro Series Extension Sleeves, Telescoping | 4" - 6" | 41 |
| HFPE5C1 | HoldRite Hydroflame Pro Series Extension Sleeves, Adjustable Cap | 1/4" - 1-1/4" | 41 |
| HFPE5C2 | HoldRite Hydroflame Pro Series Extension Sleeves, Adjustable Cap | 1" - 2" | 41 |
| HFPE5C3 | HoldRite Hydroflame Pro Series Extension Sleeves, Adjustable Cap | 1-1/4" - 3" | 41 |
| HFPE5C4 | HoldRite Hydroflame Pro Series Extension Sleeves, Adjustable Cap | 2-1/2" - 4" | 41 |
| HFPE5C5 | HoldRite Hydroflame Pro Series Extension Sleeves, Adjustable Cap | 3" - 5" | 41 |
| HFPE5C6 | HoldRite Hydroflame Pro Series Extension Sleeves, Adjustable Cap | 4" - 6" | 41 |
| HFPWM1 | HoldRite HydroFlame Pro Series Water Modules | 1/2" - 1" | 42 |
| HFPWM2 | HoldRite HydroFlame Pro Series Water Modules | 1-1/4" - 2" | 42 |
| HFPWM3 | HoldRite HydroFlame Pro Series Water Modules | 2" - 3" | 42 |
| HFPWM4 | HoldRite HydroFlame Pro Series Water Modules | 3" - 4" | 42 |
| HFPWM6 | HoldRite HydroFlame Pro Series Water Modules | 5" - 6" | 42 |
| HFPWD1 | HoldRite HydroFlame Pro Series Water Dams | 1/2" - 1" | 43 |
| HFPWD2 | HoldRite HydroFlame Pro Series Water Dams | 1-1/4" - 2" | 43 |
| HFPWD3 | HoldRite HydroFlame Pro Series Water Dams | 2" - 3" | 43 |
| HFPWD4 | HoldRite HydroFlame Pro Series Water Dams | 3" - 4" | 43 |
| HFPWD5 | HoldRite HydroFlame Pro Series Water Dams | 4" - 5" | 43 |
| HFPWD6 | HoldRite HydroFlame Pro Series Water Dams | 4" - 6" | 43 |
| HFPLTB-NP-0200-8 | HoldRite HydroFlame Pro Series Tub Boxes | 1-1/2" | 44 |
| HFPLTB-TW-0200-8 | HoldRite HydroFlame Pro Series Tub Boxes | 1-1/2" | 44 |
| HFPLTB-NP-0300-8 | HoldRite HydroFlame Pro Series Tub Boxes | 1-1/2" | 44 |
| HFPLTB-TW-0300-8 | HoldRite HydroFlame Pro Series Tub Boxes | 1-1/2" | 44 |
| HFPLTB-NP-0200-9 | HoldRite HydroFlame Pro Series Tub Boxes | 1-1/2" | 44 |
| HFPLTB-TW-0200-9 | HoldRite HydroFlame Pro Series Tub Boxes | 1-1/2" | 44 |
| HFPLTB-NP-0300-9 | HoldRite HydroFlame Pro Series Tub Boxes | 1-1/2" | 44 |
| HFPLTB-TW-0300-9 | HoldRite HydroFlame Pro Series Tub Boxes | 1-1/2" | 44 |
| HFPLTB-NP-0200-10 | HoldRite HydroFlame Pro Series Tub Boxes | 1-1/2" | 44 |
| HFPLTB-TW-0200-10 | HoldRite HydroFlame Pro Series Tub Boxes | 1-1/2" | 44 |
| HFPLTB-NP-0300-10 | HoldRite HydroFlame Pro Series Tub Boxes | 1-1/2" | 44 |
| HFPLTB-TW-0300-10 | HoldRite HydroFlame Pro Series Tub Boxes | 1-1/2" | 44 |
| HFPTB-TW-0200 | HoldRite HydroFlame Pro Series Tub Boxes | 1-1/2" | 44 |
| HFPTB-NP-0200 | HoldRite HydroFlame Pro Series Tub Boxes | 1-1/2" | 44 |

| Model # | Product Description | Penetrant Pipe Size | Page(s) |
|--------------|---|---------------------|---------|
| HFPTB-15NP | 1½" IPS Tub Box Donut | 1-1/2" | 44 |
| HFPA2 | HoldRite HydroFlame Pro Series Aerator Adapters | 1/4" - 2" | 45 |
| HFPA3 | HoldRite HydroFlame Pro Series Aerator Adapters | 1-1/4" - 3" | 45 |
| HFPA4 | HoldRite HydroFlame Pro Series Aerator Adapters | 2-1/2" - 4" | 45 |
| HFPA5 | HoldRite HydroFlame Pro Series Aerator Adapters | 4" - 5" | 45 |
| HFPA6 | HoldRite HydroFlame Pro Series Aerator Adapters | 4" - 6" | 45 |
| HFP-SH2-DRN | HoldRite HydroFlame Pro Series Shower Drain Sleeve | 2" | 46 |
| HFP-SH3-DRN | HoldRite HydroFlame Pro Series Shower Drain Sleeve | 2 | 46 |
| HFP-2CI-DRN | HoldRite HydroFlame Pro Series Cast Iron Drain Sleeves | 2" | 47 |
| HFP-23CI-DRN | HoldRite HydroFlame Pro Series Cast Iron Drain Sleeves | 2" - 3" | 47 |
| HFP-34CI-DRN | HoldRite HydroFlame Pro Series Cast Iron Drain Sleeves | 3" - 4" | 47 |
| HFP-6CI-DRN | HoldRite HydroFlame Pro Series Cast Iron Drain Sleeves | 6" | 47 |
| HFP-CSM2 | HoldRite HydroFlame Pro Series Cable & Line-Set Sleeves | Various | 48 |
| HFP-CSM3 | HoldRite HydroFlame Pro Series Cable & Line-Set Sleeves | Various | 48 |
| HFP-CSM2B | HoldRite HydroFlame Pro Series Cable & Line-Set Sleeves | Various | 48 |
| HFP-CSM3B | HoldRite HydroFlame Pro Series Cable & Line-Set Sleeves | Various | 48 |
| HFP-LSP3 | HoldRite HydroFlame Pro Series Cable & Line-Set Sleeves | Various | 48 |
| HFP-LSP3B | HoldRite HydroFlame Pro Series Cable & Line-Set Sleeves | Various | 48 |
| HFP-CF3PL | HoldRite HydroFlame Pro Series Closet Flange Sleeves | 3" | 49 |
| HFP-CF4PL | HoldRite HydroFlame Pro Series Closet Flange Sleeves | 3" - 4" | 49 |
| HFP-CF3NH | HoldRite HydroFlame Pro Series Closet Flange Sleeves | 3" | 49 |
| HFP-CF4NH | HoldRite HydroFlame Pro Series Closet Flange Sleeves | 3" - 4" | 49 |
| HFPT | HoldRite Hydroflame Pro Series Safety Cap Tool | 1/2" - 6" | 49 |
| HF-P8 | HoldRite Hydroflame Large Diameter Firestopping Sleeves | 8"-8" | 50 |
| HF-P10 | HoldRite Hydroflame Large Diameter Firestopping Sleeves | 10"-10" | 50 |
| HF-P12 | HoldRite Hydroflame Large Diameter Firestopping Sleeves | 12"-12" | 50 |
| HF-M8 | HoldRite Hydroflame Large Diameter Firestopping Sleeves | 8"-8" | 50 |
| HF-M10 | HoldRite Hydroflame Large Diameter Firestopping Sleeves | 10"-10" | 50 |
| HF-M12 | HoldRite Hydroflame Large Diameter Firestopping Sleeves | 12"-12" | 50 |
| HF-H10 | HoldRite Hydroflame Large Diameter Hollow Sleeves | 6"-8" | 50 |
| HF-H12 | HoldRite Hydroflame Large Diameter Hollow Sleeves | 8"-10" | 50 |
| HF-H14 | HoldRite Hydroflame Large Diameter Hollow Sleeves | 10"-12" | 50 |
| HFP-G1 | Telescoping Electrical Firestop Sleeve 7-1/2" - 11-3/4" Tall | 1" | 53 |
| HFP-G2 | Telescoping Electrical Firestop Sleeve 7-1/2" - 11-3/4" Tall | 2" | 53 |
| HFP-G3 | Telescoping Electrical Firestop Sleeve 7-1/2" - 11-3/4" Tall | 3" | 53 |
| HFP-G4 | Telescoping Electrical Firestop Sleeve 7-1/2" - 11-3/4" Tall | 4" | 53 |
| HFP-G5 | Telescoping Electrical Firestop Sleeve 7-1/2" - 11-3/4" Tall | 5" | 53 |
| HFP-G6 | Telescoping Electrical Firestop Sleeve 7-1/2" - 11-3/4" Tall | 6" | 53 |
| HFP-G1B | Electrical Firestop Sleeve with Adjustable Cap 7-1/4" - 8" Tall | 1" | 54 |
| HFP-G2B | Electrical Firestop Sleeve with Adjustable Cap 7-1/4" - 8" Tall | 2" | 54 |
| HFP-G3B | Electrical Firestop Sleeve with Adjustable Cap 7-1/4" - 8" Tall | 3" | 54 |
| HFP-G4B | Electrical Firestop Sleeve with Adjustable Cap 7-1/4" - 8" Tall | 4" | 54 |
| HFP-G5B | Electrical Firestop Sleeve with Adjustable Cap 7-1/4" - 8" Tall | 5" | 54 |
| HFP-G6B | Electrical Firestop Sleeve with Adjustable Cap 7-1/4" - 8" Tall | 6" | 54 |

| Accessories Available | |
|-----------------------|---|
| HFP-IS1 | Spigot Extension Sleeve #1 Firestop Sleeve - #2 Hollow Sleeve |
| HFP-IS2 | Spigot Extension Sleeve #2 Firestop Sleeve - #3 Hollow Sleeve |
| HFP-IS3 | Spigot Extension Sleeve #3 Firestop Sleeve - #4 Hollow Sleeve |
| HFP-IS4 | Spigot Extension Sleeve #4 Firestop Sleeve - #5 Hollow Sleeve |
| HFP-IS6 | Spigot Extension Sleeve #6 Firestop Sleeve - #7 Hollow Sleeve |
| HFPE1 | Telescoping Safety Cap Plus HFPE1 Extension for #1 Firestop Sleeve - #2 Hollow Sleeve |
| HFPE2 | Telescoping Safety Cap Plus HFPE2 Extension for #2 Firestop Sleeve - #3 Hollow Sleeve |
| HFPE3 | Telescoping Safety Cap Plus HFPE3 Extension for #3 Firestop Sleeve - #4 Hollow Sleeve |
| HFPE4 | Telescoping Safety Cap Plus HFPE4 Extension for #4 Firestop Sleeve - #5 Hollow Sleeve |
| HFPE5 | Telescoping Safety Cap Plus HFPE5 Extension for #5 Firestop Sleeve - #6 Hollow Sleeve |
| HFPE6 | Telescoping Safety Cap Plus HFPE6 Extension for #6 Firestop Sleeve - #7 Hollow Sleeve |
| HFP-LW-R | HoldRite HydroFlame Pro Locator Whiskers-Red |
| HFP-LW-B | HoldRite HydroFlame Pro Locator Whiskers-Black |
| HFP-LW-G | HoldRite HydroFlame Pro Locator Whiskers-Green |



For more information and to
find your nearest dealer visit
holdrite.com

Connect with us



Manufactured & Distributed by Reliance Worldwide Corporation.
HR_CAT_HydroFlame Pro_1584837204_0325

AN RWC BRAND
RWC