

XHEZ.W-J-1315 - Through-penetration Firestop Systems

Design/System/Construction/Assembly Usage Disclaimer

- Authorities Having Jurisdiction should be consulted in all cases as to the particular requirements covering the installation and use of UL Certified products, equipment, system, devices, and materials.
- Authorities Having Jurisdiction should be consulted before construction.
- Fire resistance assemblies and products are developed by the design submitter and have been investigated by UL for compliance with applicable requirements. The published information cannot always address every construction nuance encountered in the field.
- When field issues arise, it is recommended the first contact for assistance be the technical service staff provided by the product manufacturer noted for the design. Users of fire resistance assemblies are advised to consult the general Guide Information for each product category and each group of assemblies. The Guide Information includes specifics concerning alternate materials and alternate methods of construction.
- Only products which bear UL's Mark are considered Certified.

XHEZ - Through-penetration Firestop Systems

XHEZ7 - Through-penetration Firestop Systems Certified for Canada

See General Information for Through-penetration Firestop Systems

See General Information for Through-penetration Firestop Systems Certified for Canada

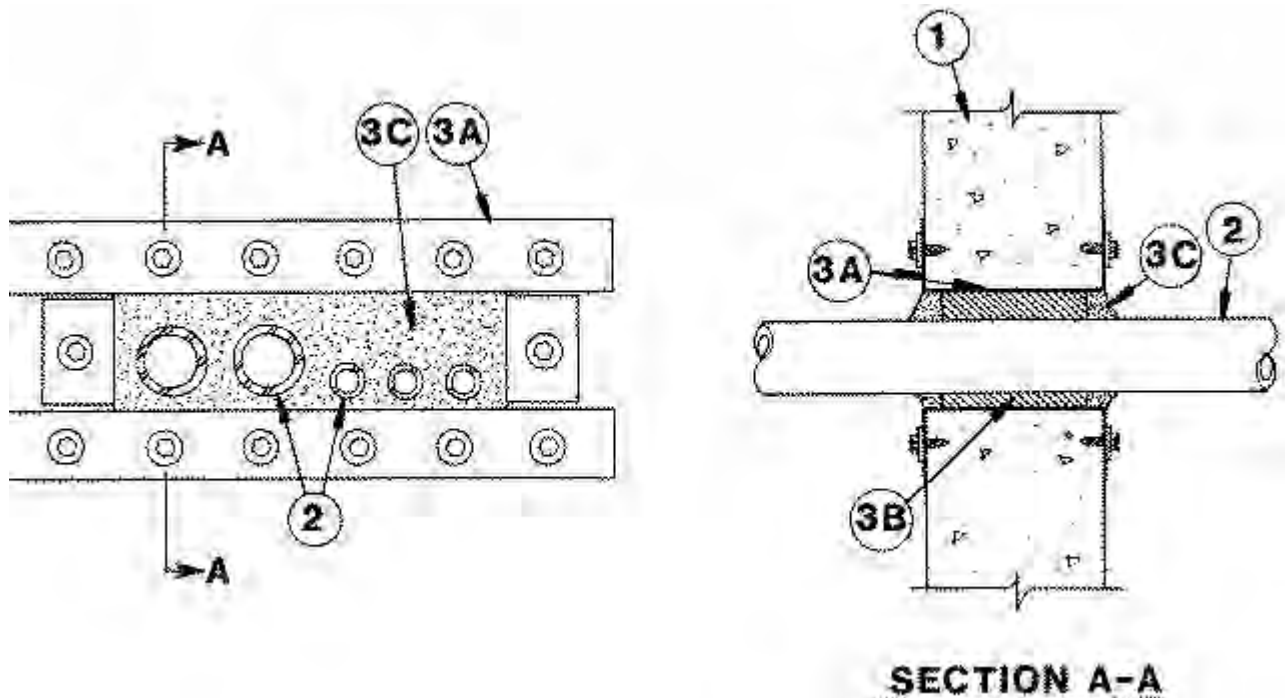
System No. W-J-1315

January 10, 2020

ANSI/UL1479 (ASTM E814)

CAN/ULC S115

F Rating - 2 Hr	F Rating -2 Hr
	FH Rating -2 Hr
T Rating - 1/2 Hr	FT Rating - 1/2 Hr
	FTH Rating -1/2 Hr



1. **Wall Assembly** — Min 5 in. (127 mm) thick reinforced lightweight or normal weight (100-150 pcf) (1600-2400 kg/m³) concrete. Wall may also be constructed of any UL Classified **Concrete Blocks***. Max area of opening is 35.75 sq in. (908 MM) with max dimension of 11 in. (279 mm)

See **Concrete Blocks** (CAZT) category in the Fire Resistance Directory for names of manufacturers.

2. **Through Penetrants** — A max of five pipes or conduits to be installed within opening. Of the five through penetrants, only two of the pipes or conduits can have a nom diam greater than 1 in. (25 mm) . The annular space between pipes or conduits shall be 1/2 in. (13 mm). The annular space between pipes or conduits and periphery of opening shall be min 1/4 in. (6 mm) to max 3/4 in. (19 mm). Pipe or conduit to be rigidly supported on both sides of wall assembly. The following types and sizes of metallic pipes or conduits may be used:

A. **Steel Pipe** — Nom 2 in. (51 mm) diam (or smaller) Schedule 5 (or heavier) steel pipe.

B. **Conduit** — Nom 2 in. (51 mm) diam (or smaller) steel electrical metallic tubing or steel conduit.

3. **Firestop System** — The firestop system shall consist of the following:

A. **Metallic Sleeve** — Prior to the installation of the metallic sleeve, a min 1/2 in. (13 mm) bead of sealant (Item 3C) shall be applied to the perimeter of the opening. Nom 5 in. (127 mm) long rectangular shaped sleeve with min 2 in. (51 mm) wide retainer tabs fabricated from min 0.019 in. (.48 mm) (No. 30MSG) galv sheet steel in accordance with instruction sheets supplied by sealant manufacturer. Steel sleeve secured to both sides of wall by means of 1/4 in. (6 mm) diam by 1-1/2 in. (38 mm) long steel concrete anchors and washers spaced 2-3/4 in. (70 mm) O.C.

B. **Packing Material** — Min 4 in. (102 mm) thickness of min 6 pcf (96 kg/m³) ceramic fiber insulation firmly packed into opening as a permanent form. Packing material to be recessed from both surfaces of wall as required to accommodate the required thickness of fill material.

C. **Fill, Void or Cavity Material* — Sealant** — Min 1/2 in. (13 mm) thickness of fill material applied within the annulus, flush with both surfaces of wall. Additional fill material to be installed such that a min 1/4 in. (6 mm) crown is formed around the penetrating items.

RELIANCE WORLDWIDE CORPORATION DBA HOLDRITE HYDROFLAME — HydroFlame 300 CG

*** Indicates such products shall bear the UL or cUL Certification Mark for jurisdictions employing the UL or cUL Certification (such as Canada), respectively.**

The appearance of a company's name or product in this database does not in itself assure that products so identified have been manufactured under UL's Follow-Up Service. Only those products bearing the UL Mark should be considered to be Certified and covered under UL's Follow-Up Service. Always look for the Mark on the product.

UL permits the reproduction of the material contained in the Online Certification Directory subject to the following conditions: 1. The Guide Information, Assemblies, Constructions, Designs, Systems, and/or Certifications (files) must be presented in their entirety and in a non-misleading manner, without any manipulation of the data (or drawings). 2. The statement "Reprinted from the Online Certifications Directory with permission from UL" must appear adjacent to the extracted material. In addition, the reprinted material must include a copyright notice in the following format: "© 2020 UL LLC"