

XHEZ.W-J-3269 - Through-penetration Firestop Systems

Design/System/Construction/Assembly Usage Disclaimer

- Authorities Having Jurisdiction should be consulted in all cases as to the particular requirements covering the installation and use of UL Certified products, equipment, system, devices, and materials.
- Authorities Having Jurisdiction should be consulted before construction.
- Fire resistance assemblies and products are developed by the design submitter and have been investigated by UL for compliance with applicable requirements. The published information cannot always address every construction nuance encountered in the field.
- When field issues arise, it is recommended the first contact for assistance be the technical service staff provided by the product manufacturer noted for the design. Users of fire resistance assemblies are advised to consult the general Guide Information for each product category and each group of assemblies. The Guide Information includes specifics concerning alternate materials and alternate methods of construction.
- Only products which bear UL's Mark are considered Certified.

XHEZ - Through-penetration Firestop Systems

XHEZ7 - Through-penetration Firestop Systems Certified for Canada

See General Information for Through-penetration Firestop Systems

See General Information for Through-penetration Firestop Systems Certified for Canada

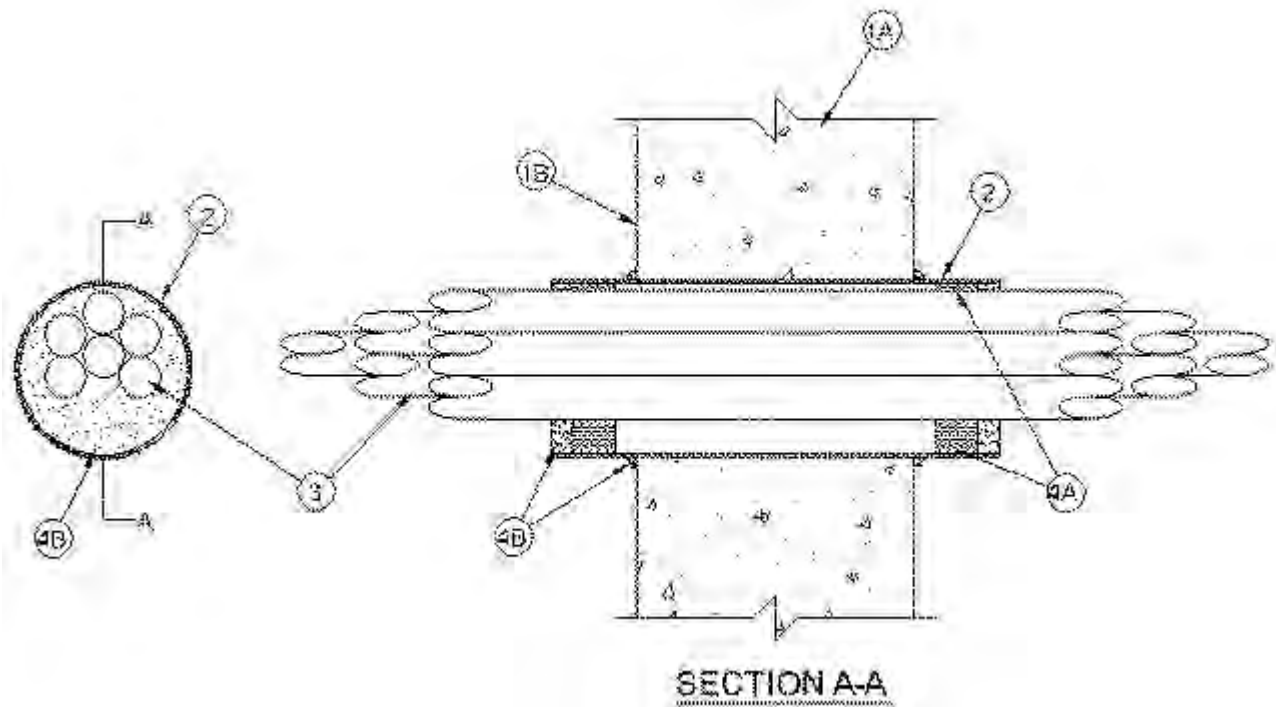
System No. W-J-3269

January 10, 2020

ANSI/UL1479 (ASTM E814)

CAN/ULC S115

F Rating - 2 Hr	F Rating -2 Hr
	FH Rating -2 Hr
T Rating - 3/4 Hr	FT Rating - 3/4 Hr
	FTH Rating -3/4 Hr



1. **Wall Assembly** — Min 5 in. (127 mm) thick reinforced lightweight or normal weight (100-150 pcf (1600-2400 kg/cu meter)) concrete. Wall may also be constructed of any UL Classified **Concrete Blocks***. Max diam of opening is 4-1/2 in. (114 mm).
See **Concrete Blocks** (CAZT) category in Fire Resistance Directory for names of manufacturers.

2. **Steel Sleeve** — Nom 4 in. (102 mm) diam (or smaller) steel electrical metallic tubing (EMT) or Schedule 5 (or heavier) steel pipe cast into wall assembly with hydraulic cement. Sleeve installed such that the ends project 1-1/2 to 2 in. (38 to 51 mm) beyond each side of the wall.

3. **Cables** — Aggregate cross-sectional area of cables in sleeve to be max 56 percent of the cross-sectional area of the sleeve. Tight bundle of cables to be concentrically or eccentrically within the steel sleeve. The annular space within the firestop system shall be a min of 1/4 in. (6 mm) to a max of 1-1/2 in. (38 mm). Cables to be rigidly supported on both sides of the wall. Any combination of the following types and sizes of cables may be used:

- A. Max 200 pair No. 24 AWG (or smaller) copper conductor with polyvinyl chloride (PVC) insulation and jacketing material.
- B. Max 1/C No. 350 kcmil (or smaller) copper conductor cable with cross-linked polyethylene (XLPE) jacket.
- C. Max 7/C No. 12 AWG (or smaller) copper conductor power and control cables with XLPE or PVC insulation with XLPE or PVC jacket.
- D. Max 3/C No. 3/0 AWG (or smaller) copper or aluminum conductor SER cables with PVC insulation and jacket.
- E. Max 3/C No. 2/0 AWG (or smaller) copper conductor PVC jacketed aluminum clad or steel clad TEK cable.
- F. Max 110/125 fiber optic (F.O.) cable with PVC insulation and jacket.
- G. Max 3/C with ground No. 8 AWG (or smaller) copper conductor NM cable (Romex) with PVC insulation and jacket.
- H. Max RG/U coaxial cable with fluorinated ethylene insulation and jacket.
- I. Max 4 pair No. 24 AWG (or smaller) copper conductor data cable with Mylar jacket and insulation.

4. **Firestop System** — The firestop system shall consist of the following:

- A. **Packing Material** — Min 1 in. (25 mm) thickness of min 4 pcf (64 kg/cu meter) mineral wool batt insulation tightly packed into opening as a permanent form. Packing material recessed from each end of sleeve as required to

accommodate the required thickness of fill material.

B. Fill, Void or Cavity Material* - Caulk — Min 1/2 in. (13 mm) thickness of fill material applied within the annulus, flush with each end of sleeve. Caulk to be forced into interstices of cable group to max extent possible. A min 1/4 in. (6 mm) diam bead of caulk shall be applied at the concrete wall/steel sleeve interface on both sides of the wall.

RELIANCE WORLDWIDE CORPORATION DBA HOLDRITE HYDROFLAME — HydroFlame 300 CG

*** Indicates such products shall bear the UL or cUL Certification Mark for jurisdictions employing the UL or cUL Certification (such as Canada), respectively.**

Last Updated on 2020-01-10

The appearance of a company's name or product in this database does not in itself assure that products so identified have been manufactured under UL's Follow-Up Service. Only those products bearing the UL Mark should be considered to be Certified and covered under UL's Follow-Up Service. Always look for the Mark on the product.

UL permits the reproduction of the material contained in the Online Certification Directory subject to the following conditions: 1. The Guide Information, Assemblies, Constructions, Designs, Systems, and/or Certifications (files) must be presented in their entirety and in a non-misleading manner, without any manipulation of the data (or drawings). 2. The statement "Reprinted from the Online Certifications Directory with permission from UL" must appear adjacent to the extracted material. In addition, the reprinted material must include a copyright notice in the following format: "© 2020 UL LLC"