



XHEZ.W-L-2731 - THROUGH-PENETRATION FIRESTOP SYSTEMS

Design/System/Construction/Assembly Usage Disclaimer

- Authorities Having Jurisdiction should be consulted in all cases as to the particular requirements covering the installation and use of UL Certified products, equipment, system, devices, and materials.
- Authorities Having Jurisdiction should be consulted before construction.
- Fire resistance assemblies and products are developed by the design submitter and have been investigated by UL for compliance with applicable requirements. The published information cannot always address every construction nuance encountered in the field.
- When field issues arise, it is recommended the first contact for assistance be the technical service staff provided by the product manufacturer noted for the design. Users of fire resistance assemblies are advised to consult the general Guide Information for each product category and each group of assemblies. The Guide Information includes specifics concerning alternate materials and alternate methods of construction.
- Only products which bear UL's Mark are considered Certified.

XHEZ - Through-penetration Firestop Systems XHEZ7 - Through-penetration Firestop Systems Certified for Canada

See General Information for Through-penetration Firestop Systems

See General Information for Through-penetration Firestop Systems Certified for Canada

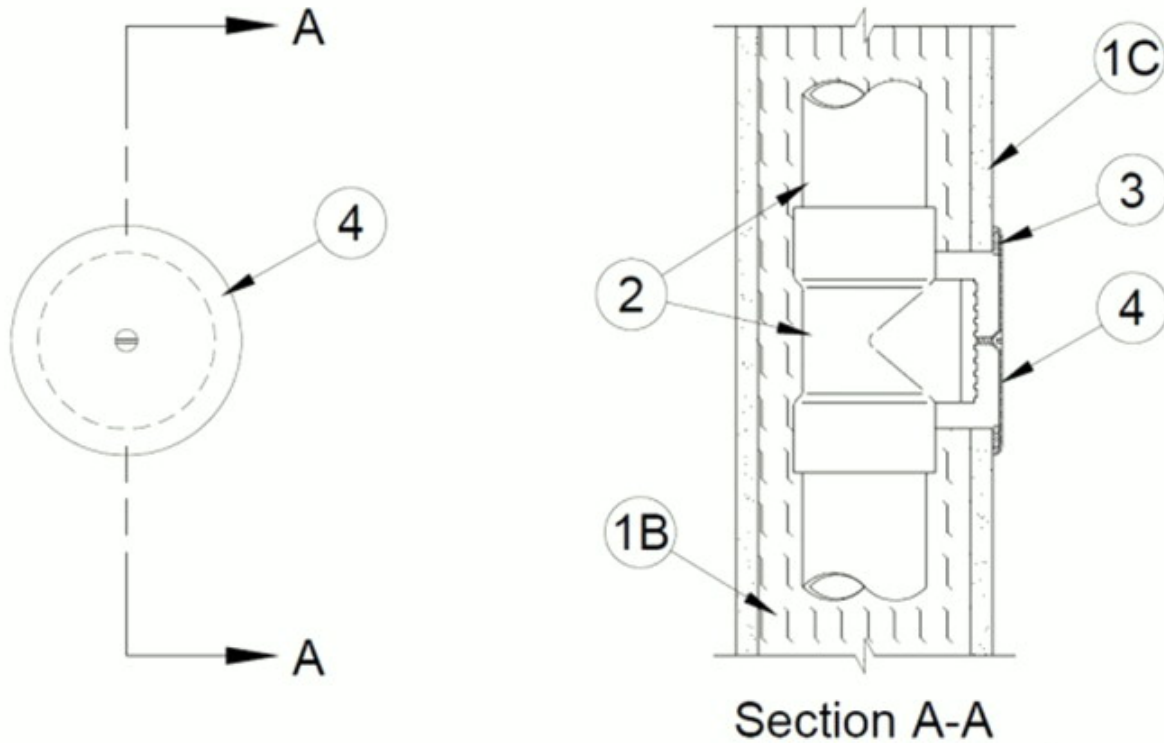
System No. W-L-2731

April 29, 2019

ANSI/UL1479 (ASTM E814)

CAN/ULC S115

| | |
|-----------------|------------------|
| F Rating — 1 Hr | F Rating — 1 Hr |
| T Rating —1 Hr | FT Rating —1 Hr |
| | FH Rating — 1 Hr |
| | FTH Rating —1 Hr |



System tested with a pressure differential of 2.5 Pa between the exposed and the unexposed surfaces with the higher pressure on the exposed side.

1. **Wall Assembly** — The 1 hr fire-rated gypsum board/stud wall assembly shall be constructed of the materials and in the manner specified in the individual U300 Series Wall and Partition Designs in the UL Fire Resistance Directory and shall include the following construction features:

A. **Studs** — Wall framing to consist of nom 2 by 6 in. (51 by 152 mm) (or larger) wood studs or doubled or staggered nom 2 by 4 in. (41 by 102 mm) (or larger) wood studs spaced in accordance with the individual U300 Series Wall and Partition Designs.

B. **Insulation*** — R13 (or higher) glass fiber or mineral fiber batt insulation friction fitted into stud cavity.

C. **Gypsum Board*** — One layer of nom 5/8 in. (16 mm) thick gypsum board, as specified in the individual Wall and Partition Design. Max diam of opening is 5 in. (127 mm).

2. **Piping System** — One nom 3 in. (76 mm) diam (or smaller) Schedule 40 solid core or cellular core PVC pipe with PVC tee clean-out for use in closed (process or supply) or vented (drain, waste or vent) piping systems, installed within stud cavity. PVC clean-out to be located behind opening in gypsum board.

3. **Fill, Void or Cavity Material*- Putty Pads** — Nom 1/8 in. (3.2 mm) thick putty pads to be cut to size, pad liner removed, and the thickness doubled to achieve a min 1/4 in. (6 mm). The material shall be applied under the cover plate around the perimeter of the opening to a min 1/4 in. (6 mm) thickness by 3/4 in. (19 mm) width.

RELIANCE WORLDWIDE CORPORATION DBA HOLDRITE HYDROFLAME — HydroFlame Putty Pad

4. **Cover Plate** — Min 6-1/2 in. (165 mm) diam 24 gauge (or heavier) stainless steel cover plate secured to PVC clean-out with stainless steel screw through center of plate. Cover plate to be tightened squarely to wall and shall overlap surface of gypsum board a min of 3/4 in. (19 mm) around entire perimeter of opening.

*** Indicates such products shall bear the UL or cUL Certification Mark for jurisdictions employing the UL or cUL Certification (such as Canada), respectively.**

Last Updated on 2019-04-29

The appearance of a company's name or product in this database does not in itself assure that products so identified have been manufactured under UL's Follow-Up Service. Only those products bearing the UL Mark should be considered to be Certified and covered under UL's Follow-Up Service. Always look for the Mark on the product.

UL permits the reproduction of the material contained in the Online Certification Directory subject to the following conditions: 1. The Guide Information, Assemblies, Constructions, Designs, Systems, and/or Certifications (files) must be presented in their entirety and in a non-misleading manner, without any manipulation of the data (or drawings). 2. The statement "Reprinted from the Online Certifications Directory with permission from UL" must appear adjacent to the

extracted material. In addition, the reprinted material must include a copyright notice in the following format: "© 2019 UL LLC"