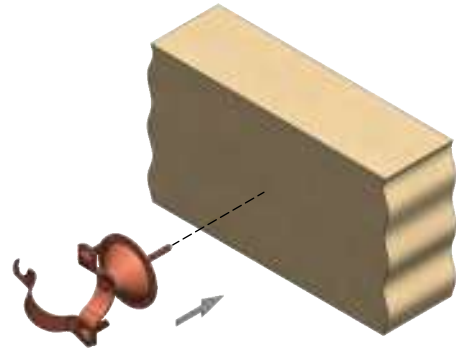
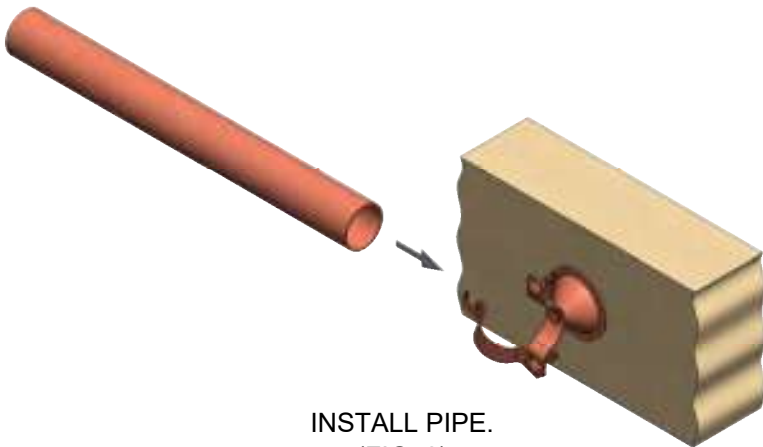


# INSTALLATION INSTRUCTIONS

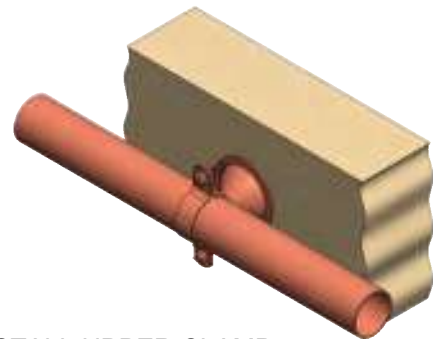
## Bell Hanger Series



LOOSEN UPPER CLAMP  
AND SECURE TO FRAMING.  
(FIG. 1)



INSTALL PIPE.  
(FIG. 2)



REINSTALL UPPER CLAMP.  
TIGHTEN SCREW.  
(FIG. 3)

THIS INFORMATION IS PROPRIETARY TO HOLDRITE AND IS SUBJECT TO CHANGE WITHOUT NOTICE. IT MAY NOT BE REPRODUCED IN PART OR WHOLE WITHOUT WRITTEN AUTHORIZATION.

