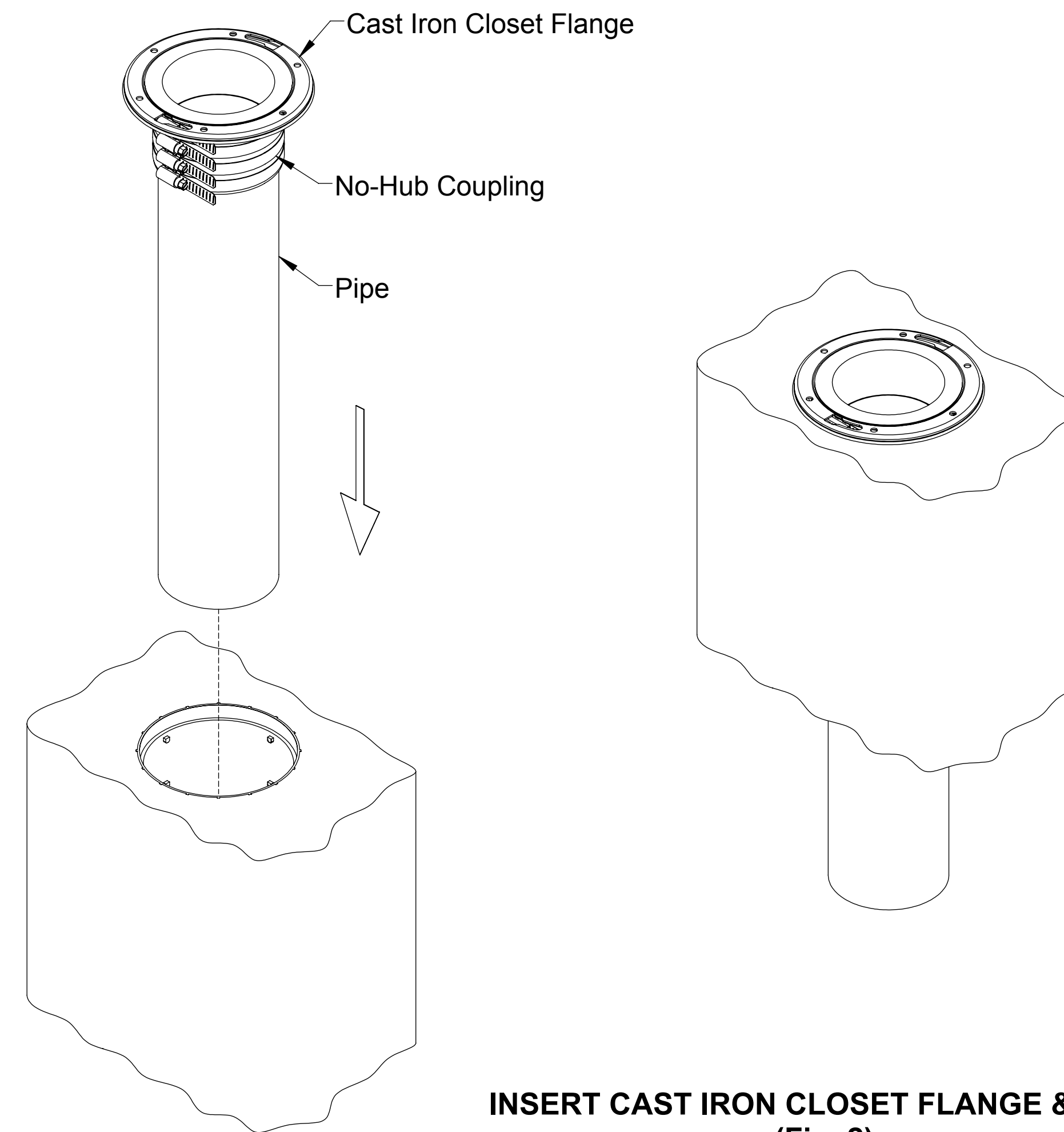


Turn Wrench, counter-clock-wise.

**REMOVE CAP WITH HF WRENCH, OR BREAK-OUT WITH HAMMER.  
(SLEEVE SHOWN POURED IN CONCRETE)**  
(Fig. 1)



**INSERT CAST IRON CLOSET FLANGE & PIPE.**  
(Fig. 2)