

Product Submittal	
Name	
Date	
Architect/Owner	
Contractor	
Tag	
Notes	

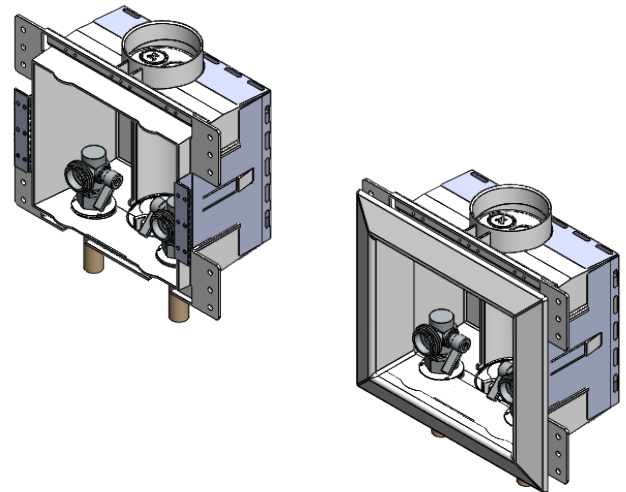
HoldRite™ HR-WR Series Fire-Rated Washing Machine Outlet Box

Product Specification

HoldRite Fire-Rated Washing Machine Outlet Boxes are designed for use in residential laundry spaces and allow for installation of water supply valves during the rough-in phase. Can be mounted for top or bottom supplied water lines and installed between studs using a HYCO bar or HoldRite 170. Outlet Box Assemblies include Hot and Cold supply valves with quarter-turn handles and 3/4" male threaded hose connections. Can be used with Copper, PEX, or CPVC. 2" drain socket and 3/4" IPS and CTS knockouts on top/bottom of box for connection of condensate/T&P drain lines. Face plate included. Optional integral water hammer arrestors for water shock wave prevention available. Drain funnel and other accessories sold separately.

Materials

- Box: FR-ABS
- Valve Body: DZR LF Brass
- Valve Ball: DZR LF Brass
- Handle: Aluminum
- Arrestor: Stainless Steel, DZR LF Brass
- Face Plate: ABS (paintable)
- Drain Funnel: ABS



Valve Performance

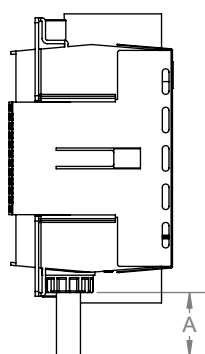
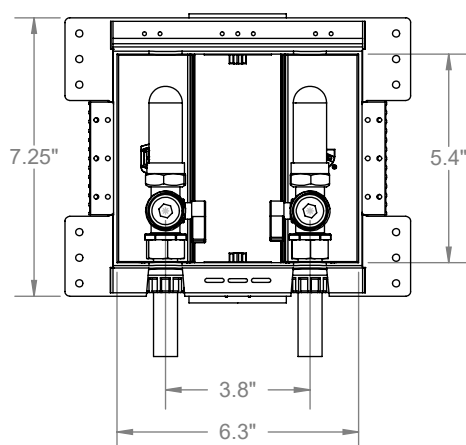
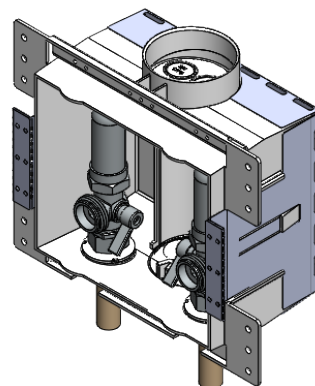
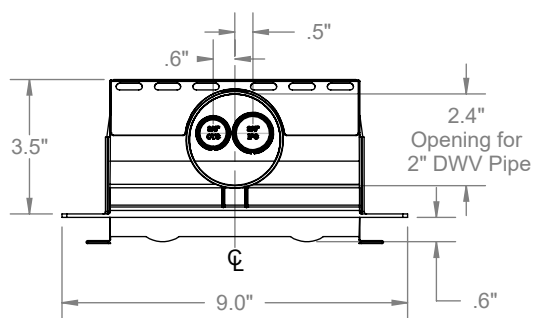
- Maximum working temperature: 160 °F
- Maximum working pressure: 125 PSI

Codes and Listings

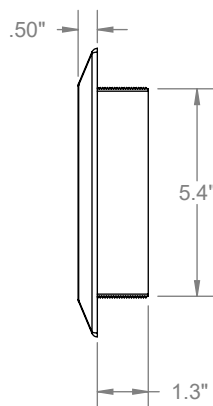
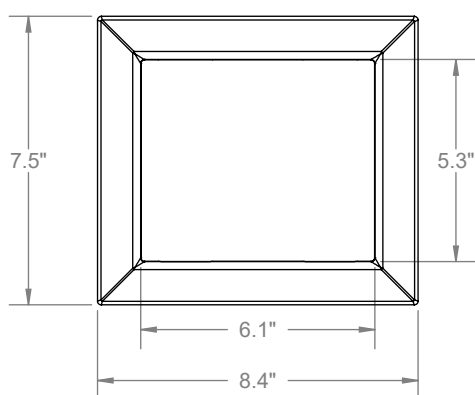
- Box: IAPMO PS54
- Valves: ASME A112.18.1/CSA125.1, NSF/ANSI 14, NSF/ANSI/CAN 61, NSF/ANSI/CAN 372
- Arrestors: ASSE1010
- PEX-A Tubing: ASTM F876, ASTM F877, CSA B137.5
- Copper Type L Tubing: ASTM B88
- CPVC Tubing: ASTM D2486
- Assemblies: Certified by Intertek to meet ASTM E814, CAN/ULC-S115. Control No.5024724

Inlet Fitting	ASTM E814 Ratings		CAN/ULC-S115 Ratings	
	RWC/PF 60-02	RWC/PF 120-02	RWC/PF 60-02	RWC/PF 120-02
PEX or CPVC	F-Rating: 60 Min.	F-Rating: 120 Min.	F/FH-Rating: 60 Min.	F/FH-Rating: 120 Min.
	T-Rating: 60 Min.	T-Rating: 88 Min.	FT/FTH-Rating: 60 Min.	FT/FTH-Rating: 88 Min.
Copper	F-Rating: 60 Min.	F-Rating: 120 Min.	F/FH-Rating: 60 Min.	F/FH-Rating: 120 Min.
	T-Rating: 32 Min.	T-Rating: 90 Min.	FT/FTH-Rating: 32 Min.	FT/FTH-Rating: 90 Min.

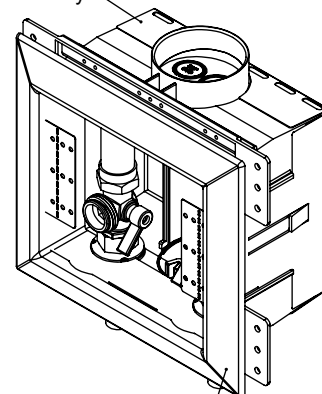
Dimensions



TUBING	A
PEX-A	1.60" Min.
CPVC	1.80" Min.
Copper Type L	2.60" Min.



Firestop Intumescent
Composite and Galv Steel
Retainer Assembly



Face Plate adjustable
between 1/2"
to 1-1/4" drywall thickness