

Product Submittal	
Name	
Date	
Architect/Owner	
Contractor	
Tag	
Notes	

HoldRite™ HR-F Series Fixture Outlet Box Product Specification

HoldRite Fixture Outlet Boxes are designed for use in commercial and residential applications and allow for installation of water supply valves during the rough-in phase. Can be installed directly to a stud via flange holes or between studs using a HYCO bar, HoldRite 170, or other HoldRite galvanized bracketing. Outlet Box Assemblies include a supply valve with a quarter-turn handle and a 1/4" or 3/8" threaded compression connection. Can be used with Copper, PEX, or CPVC. Protective debris cover included. Escutcheons, Valve Extension, and other accessories sold separately. Fire-rated version available.

Materials

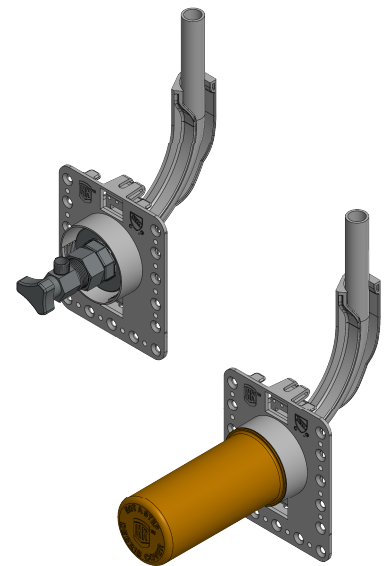
- Box: ABS
- Valve Body: DZR LF Brass
- Valve Ball: DZR LF Brass
- Handle: Zinc
- Escutcheon: ABS, White (paintable) or Chrome-plated
- Debris Cover: Polypropylene

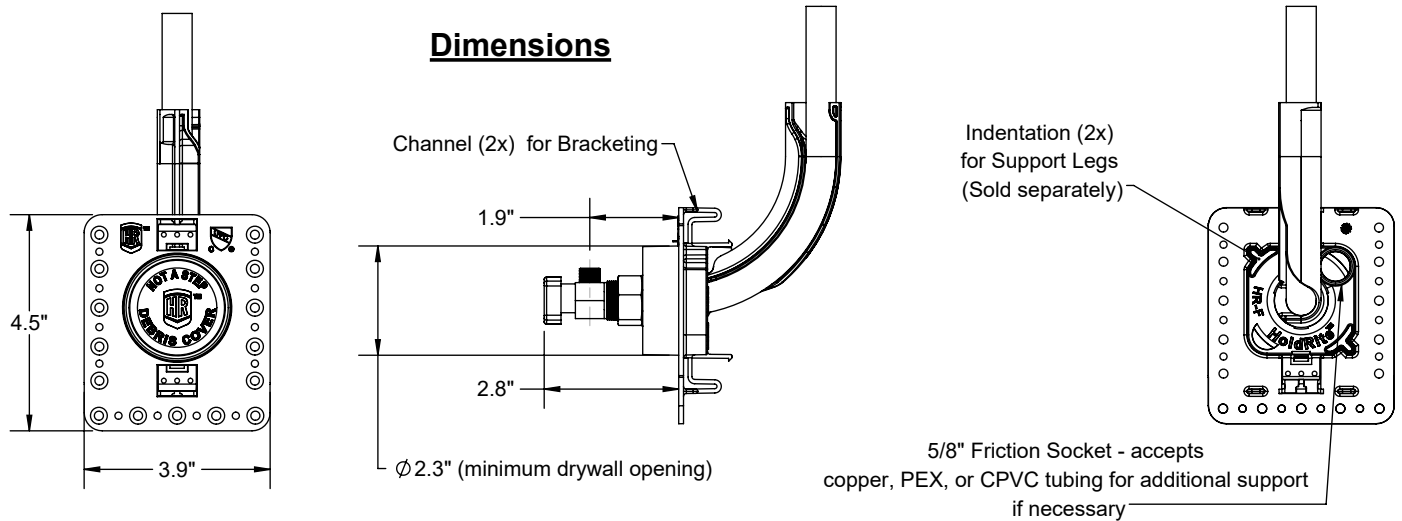
Valve Performance

- Maximum working temperature: 160 °F
- Maximum working pressure: 125 PSI

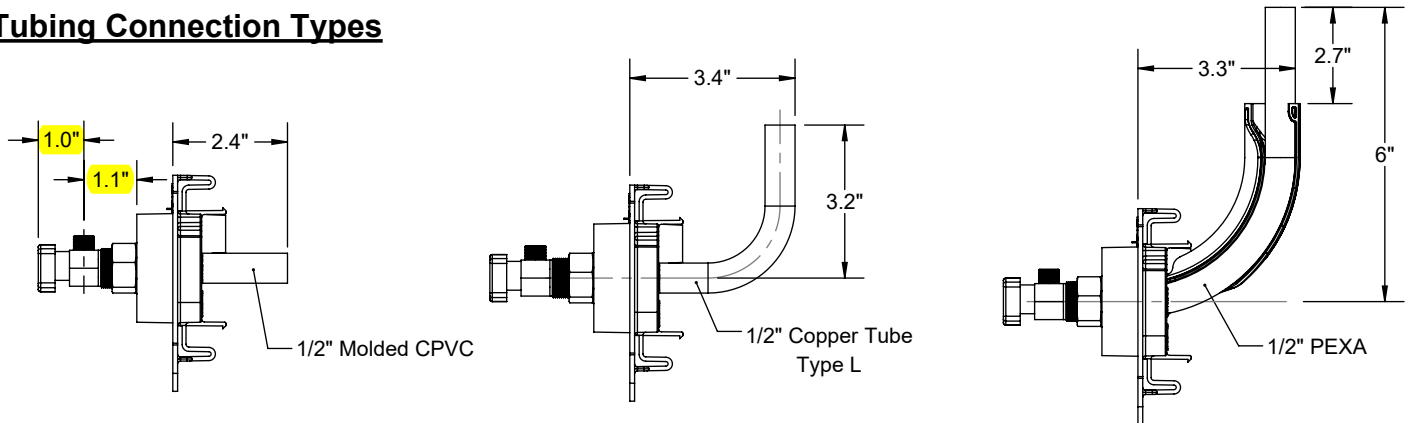
Codes and Listings

- Box: IAPMO PS54
- Valves: ASME A112.18.1/CSA125.1, NSF/ANSI 14, NSF/ANSI/CAN 61, NSF/ANSI/CAN 372 [Q] This product meets the reduced Q test statistic criteria of 0.5 µg for lead per Section 9.5.1.1 of NSF/ANSI/CAN 61.
- PEX-A Tubing: ASTM F876, ASTM F877, CSA B137.5
- Copper Type L Tubing: ASTM B88
- CPVC Tubing: ASTM D2486



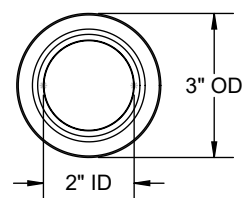


Tubing Connection Types

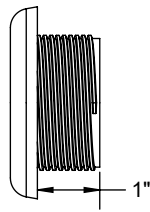


Escutcheon

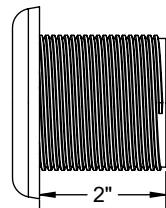
Sold Separately. Available in White (paintable) or Chrome-Plated.



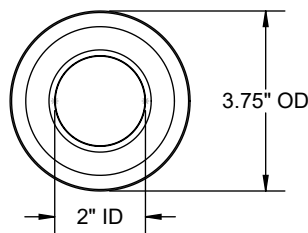
Standard Diameter



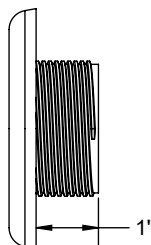
Standard Length



Extended Length
(1-1/2" to 2-1/4" walls)



Large Diameter



Large OD Escutcheon
available only in Standard Length

Drywall Config.	Standard Length	Extended Length
1/2"	✓	-
5/8"	✓	-
1/2" & 5/8"	✓	-
2x 1/2"	✓	-
2x 5/8"	✓	-
Cabinet Walls	-	✓