



**HOLDRITE®**  
CONVERTING MAKESHIFT METHODS INTO ENGINEERED SOLUTIONS<sup>SM</sup>

# HR-80-360

## WATER HEATER RESTRAINT

### INSTALLATION INSTRUCTIONS:

\*Caution: Wall covering may conceal electrical wiring or pipes, which may cause damage or serious injury if punctured by drills or fasteners. Unless you are confident that there will be no interference from such obstacles, we recommend that you seek qualified help when installing this product.

**INSTALLER: WEAR GLOVES AND PROTECTIVE EYEWEAR WHEN INSTALLING THIS PRODUCT.**

\*Caution: Strap coil is under tension.

### BOX CONTENTS:

- 4 - Straps
- 4 - Buckles
- 4 - Lag Bolts  $\frac{1}{4}$ " x  $2\frac{1}{2}$ " Self-Drilling with  $\frac{1}{4}$ " Flat Washers
- 2 -  $\frac{3}{8}$ " carriage bolts, washers, and nuts

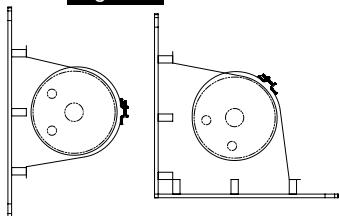
#### TOOLS NEEDED:

- $\frac{3}{8}$ " Socket or Wrench for Tightening Lag Bolts at Wall
- $\frac{9}{16}$ " Wrench for Tightening Carriage Bolts at Buckles
- Optional: Drill with  $\frac{1}{8}$ " Drill Bit

### Step 1

Select water heater location against a wood stud wall. Positioning directly in front of a 2" x 4" wall stud is strongly recommended, and there must be a stud on each side of the unit to anchor the Straps. See Figure A.

Figure A

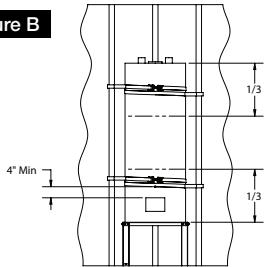


### Step 2

Straps must be installed in the upper and lower 1/3 of the water heater body. The lower strap must be at least 4" above the water heater controls. See Figure B.

Mark the wall studs on both sides of the water heater where you will install the straps. Drill  $\frac{1}{8}$ " pilot holes if desired.

Figure B



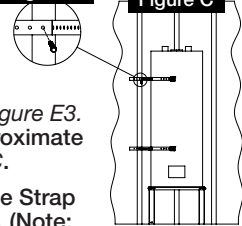
### Step 3

First Strap pair assembly (select either high or low position). Select Short Strap, and temporarily install one Buckle per Figure E1 & E2, without bending the Strap back. See Figure E3. Hold Short Strap so the Buckle is in the approximate front-center of the water heater. See Figure C.

Select a mounting hole at the other end of the Strap that best aligns to the pilot mark on the stud. (Note: Allow a slight tension rather than slack when selecting the mounting hole.) If necessary, re-position the Buckle and re-align. Secure the end of the Short Strap to the stud with a  $\frac{1}{4}$ " x  $2\frac{1}{2}$ " lag bolt and washer. See Figure D.

Figure D

Figure C

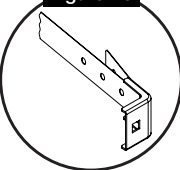
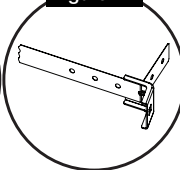
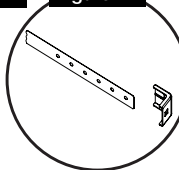


### Step 4

Figure E1

Figure E2

Figure E3



Install Long Strap (See Figure C, D, & E) on the opposite side of the heater per Step 3 (See Figure C, D, & E1-E2) above. Select the mounting holes which place the Buckle at the front-center of the water heater, the buckles must end up approximately  $2\frac{1}{2}$ " - 3" apart. Select the buckle and wall mounting holes accordingly. Secure Long Strap to the second wall stud as above.

Wrap Long Strap completely around tank and slide them around to the rear of the tank, as shown in Figure F and bring across to the front of tank.

Bend the Strap ends that pass through the Buckles against the back side of the Buckles, so they will press against the water heater tank when secured (See Figure F).

Secure the two Buckles together with  $\frac{3}{8}$ " carriage bolt, nut and washer, and tighten (See Figure G).

Figure F

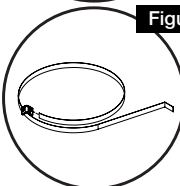
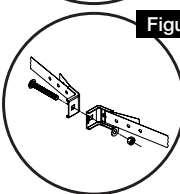


Figure G



### Step 5

Second Strap pair assembly: Repeat steps 2 - 4 for the second pair of Straps. Although selecting the same hole and slot positions as in the first installation is likely to work, in some cases it may be necessary to slightly reposition the Buckle or wall mount. If necessary, trim Strap ends at the wall. Installation complete.

Figure G

