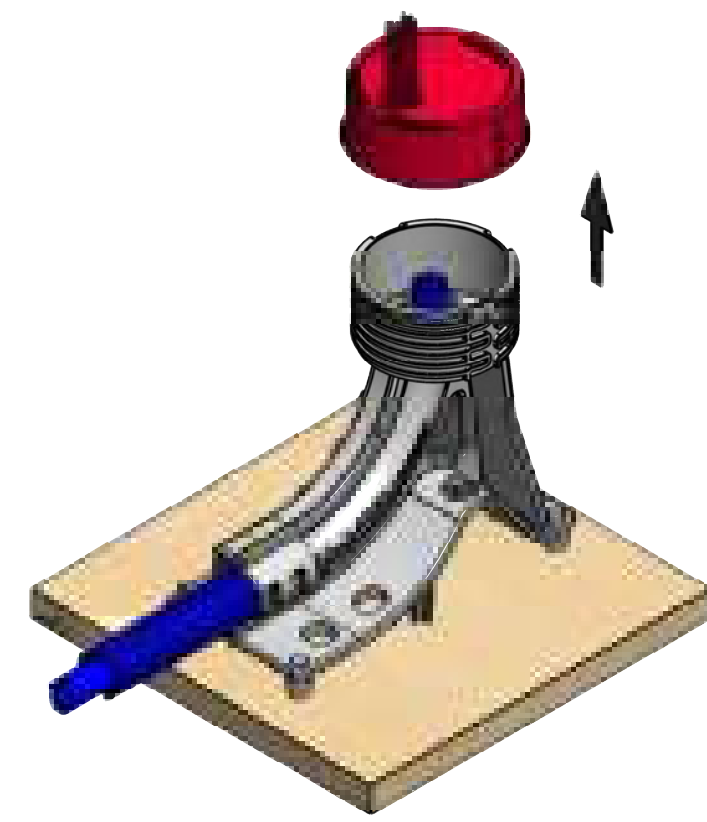
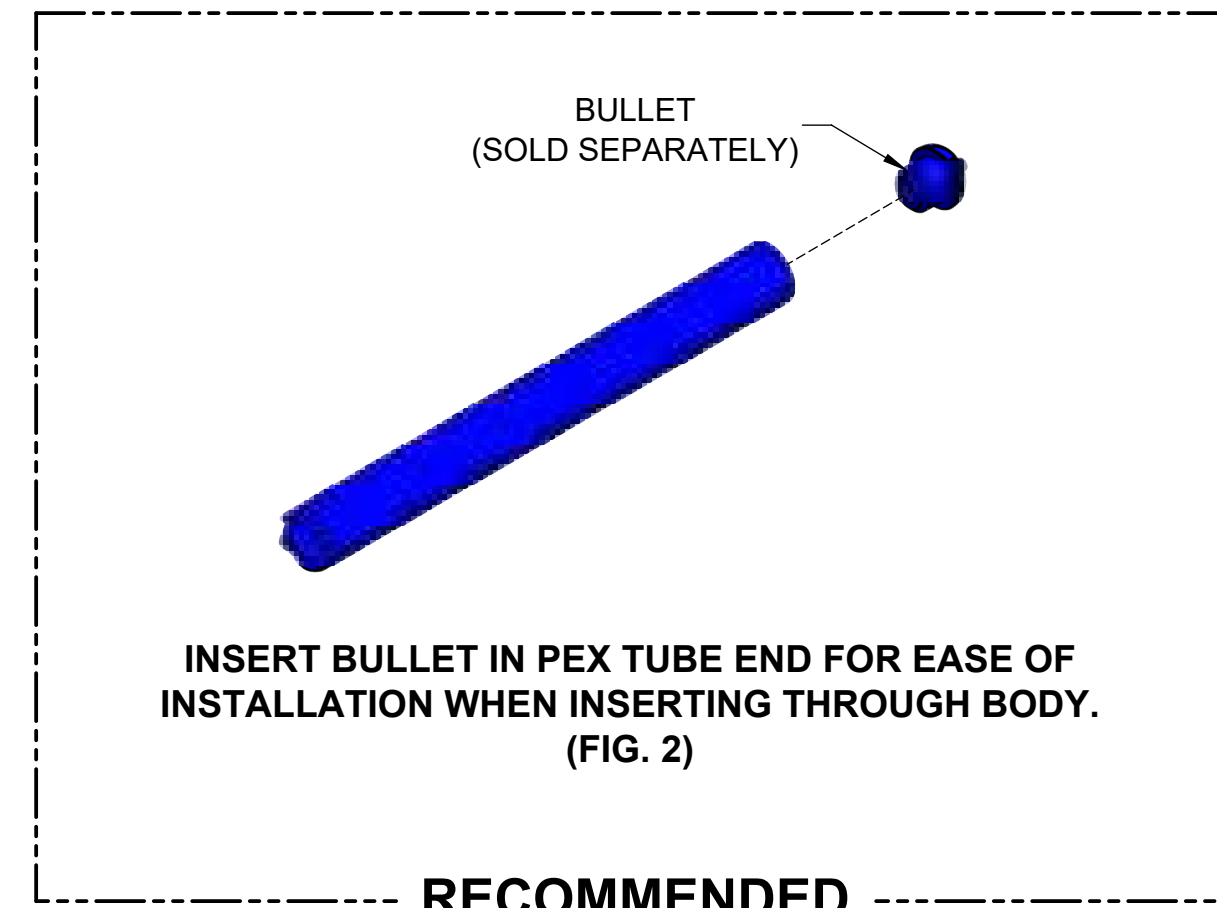


WITH CAP ADJUSTED TO SLAB HEIGHT, SECURE 703 ASSY TO FORM DECKING WITH 4 NAILS OR SCREWS. (FIG. 1)

Note: Whisker bundle should face curve side of #703 bracket, as shown above.

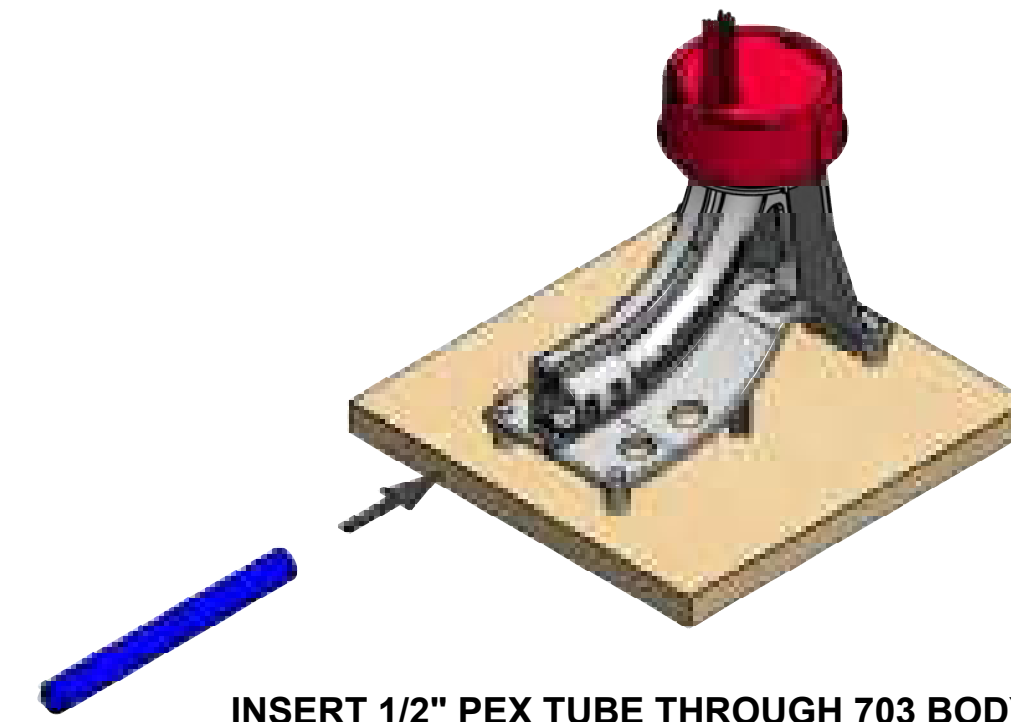


REMOVE ADJUSTABLE CAP AND LOCATOR WHISKERS. (FIG. 5)



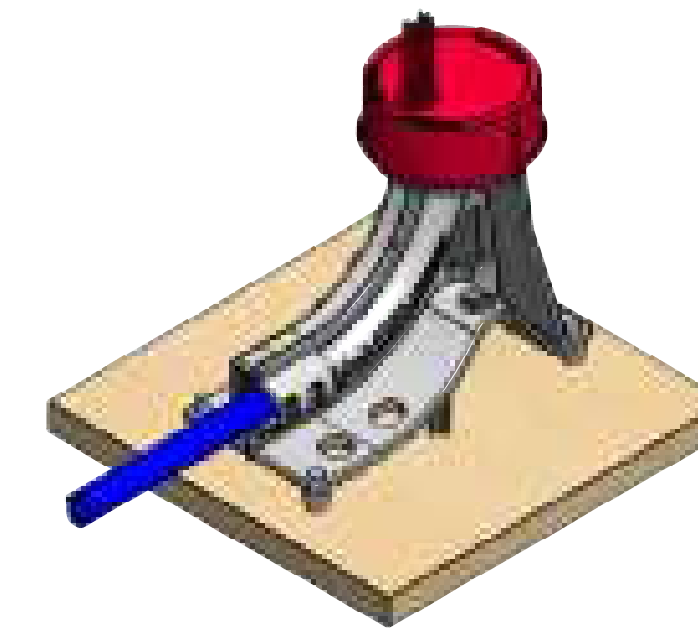
INSERT BULLET IN PEX TUBE END FOR EASE OF INSTALLATION WHEN INSERTING THROUGH BODY. (FIG. 2)

RECOMMENDED

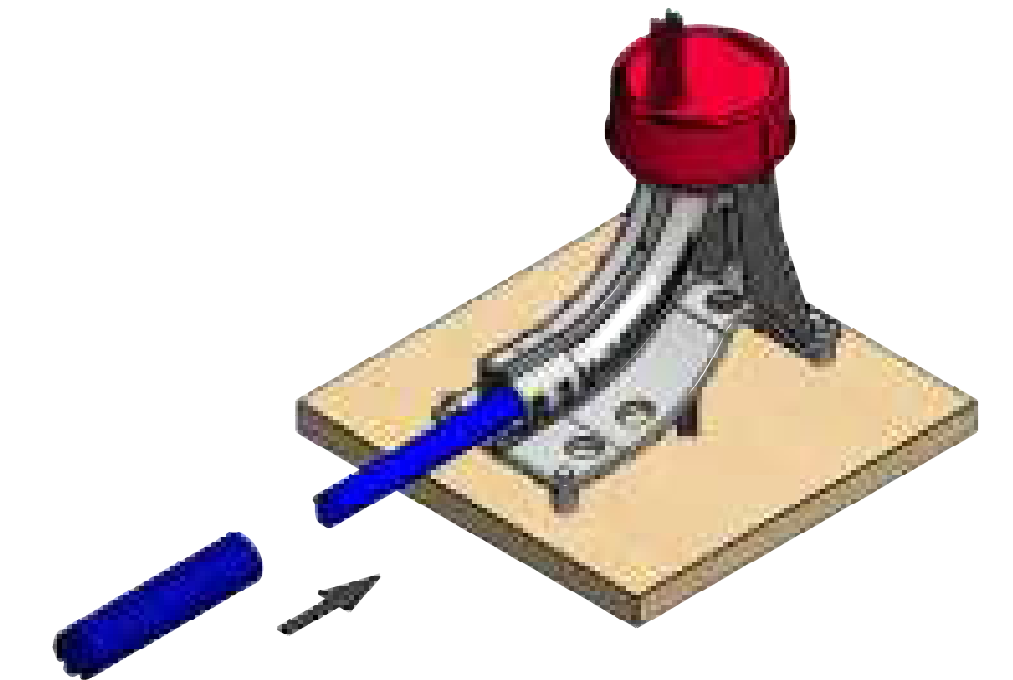


INSERT 1/2" PEX TUBE THROUGH 703 BODY. (FIG. 3A)

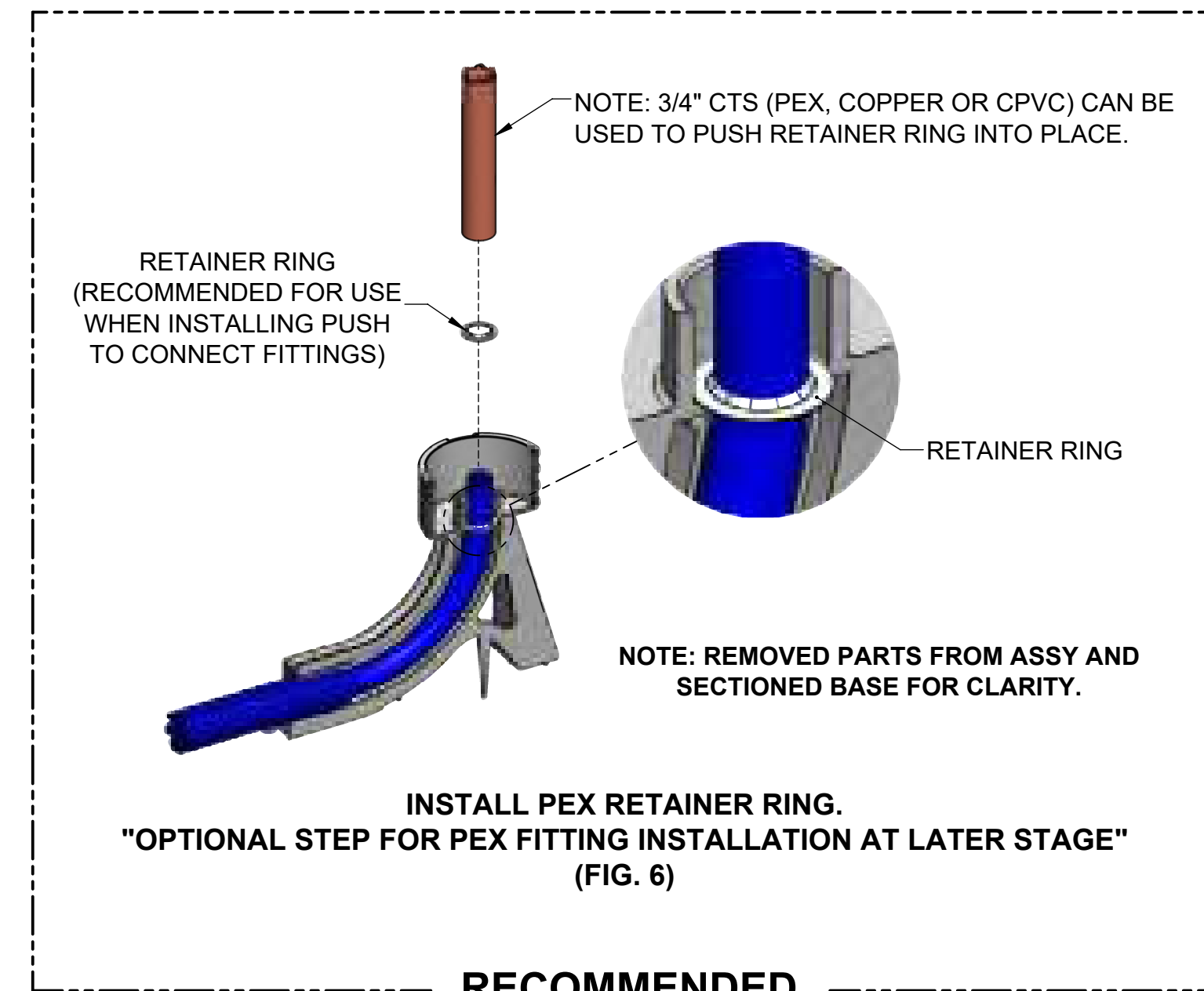
Note: For 8" slab height PEX tubing should extend 8-5/8" beyond corrugated sleeving, prior to PEX insertion into bracket.



PUSH TUBE THROUGH UNTIL IT HITS BOTTOM SIDE OF CAP. (FIG. 3B)



SLIDE PLASTIC CORRUGATED SLEEVING OVER PEX TUBE UNTIL LOCKED IN PLACE. (FIG. 4)



RETAINER RING (RECOMMENDED FOR USE WHEN INSTALLING PUSH TO CONNECT FITTINGS)

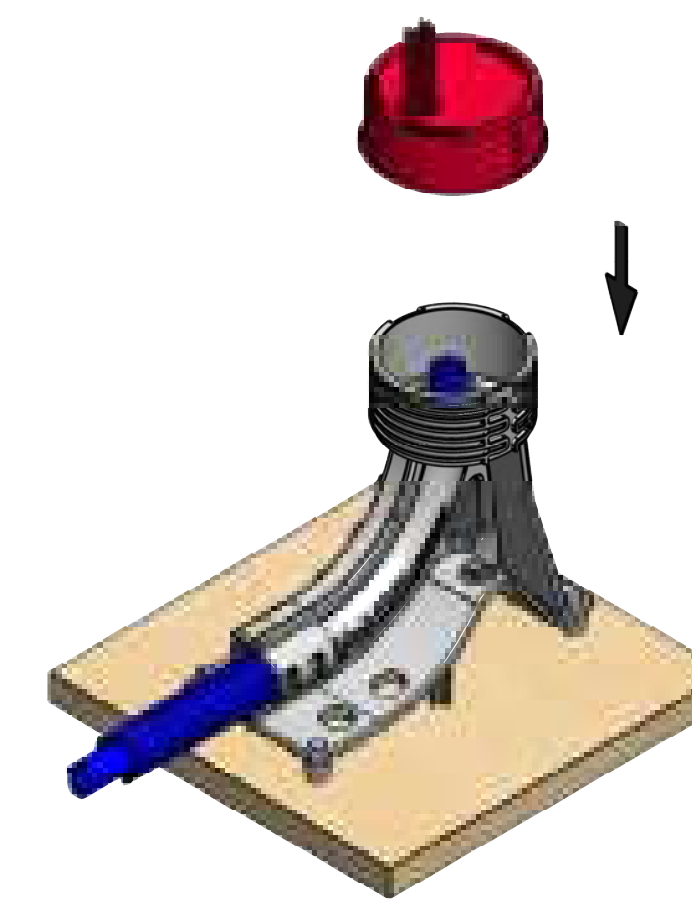
NOTE: 3/4" CTS (PEX, COPPER OR CPVC) CAN BE USED TO PUSH RETAINER RING INTO PLACE.

RETAINER RING

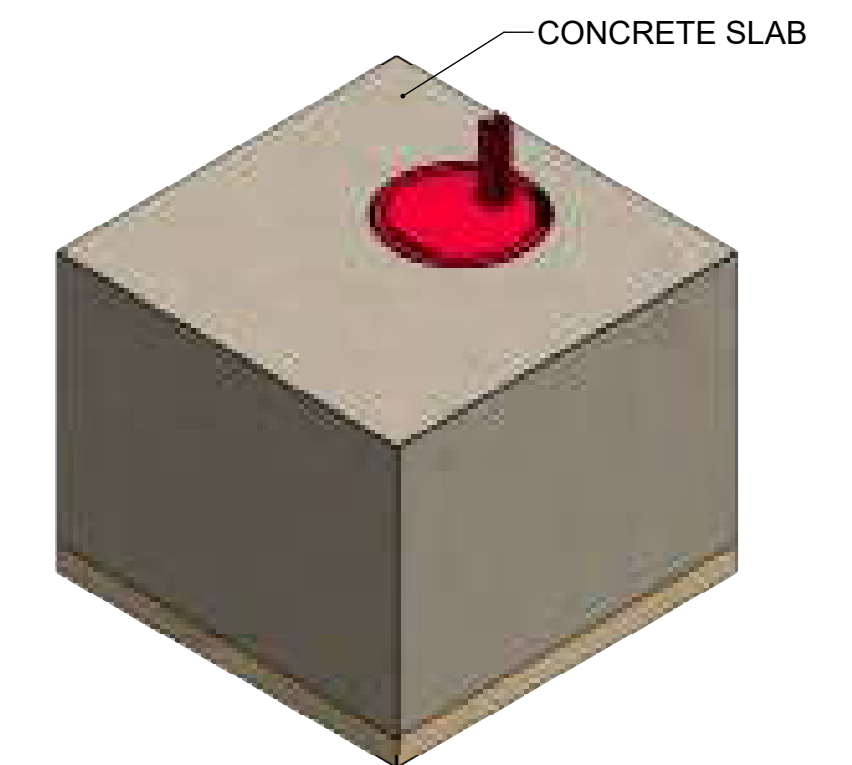
NOTE: REMOVED PARTS FROM ASSY AND SECTIONED BASE FOR CLARITY.

INSTALL PEX RETAINER RING. "OPTIONAL STEP FOR PEX FITTING INSTALLATION AT LATER STAGE" (FIG. 6)

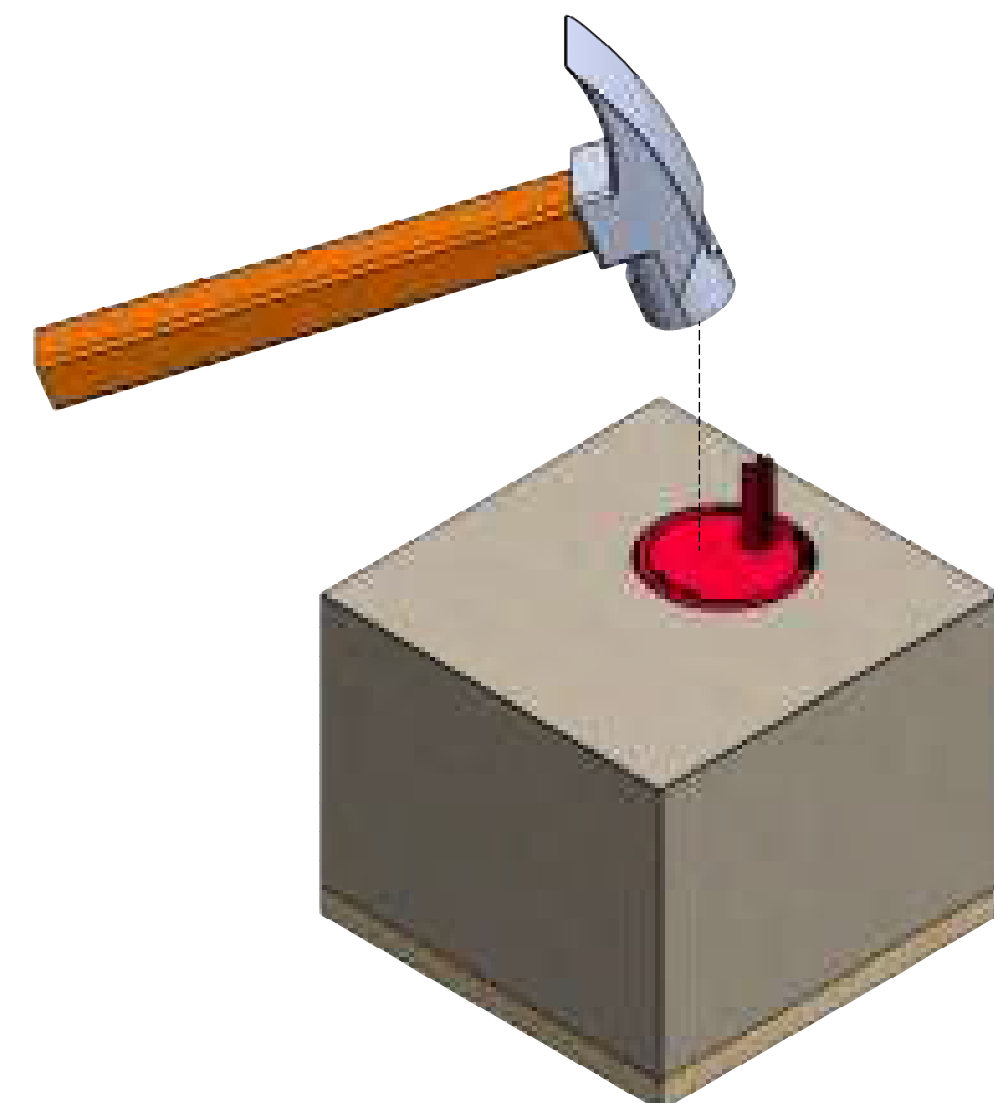
RECOMMENDED



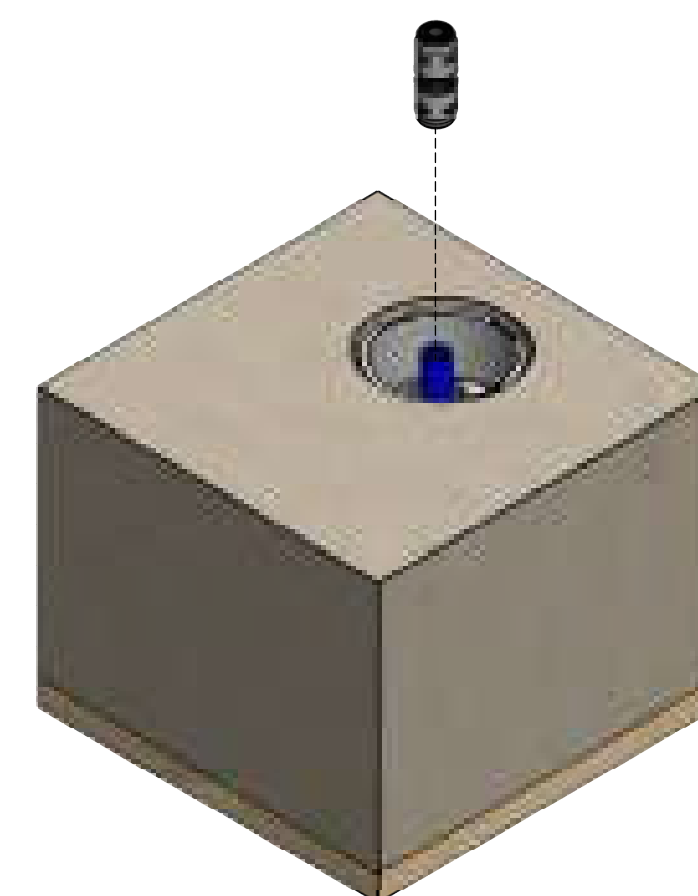
REATTACH ADJUSTABLE CAP AND LOCATOR WHISKERS AND SET TO REQUIRED SLAB HEIGHT. (FIG. 7)



POUR CONCRETE. (FIG. 8)



WHEN IT IS TIME TO CONNECT TO PEX TUBING, REMOVE ADJUSTABLE CAP AND LOCATOR WHISKERS USING HAMMER. (FIG. 9)



INSTALL 1/2" PEX FITTING. [PUSH-TO-CONNECT OR F1960 COLD EXPANSION FITTING] (FIG. 10)

#703-SC Shown



#703-SC / -DC In-Slab PEX Protector Assy, Installation Instructions, RevB, 09-14-20 (For 7-1/2" thru 8" Slab Heights)