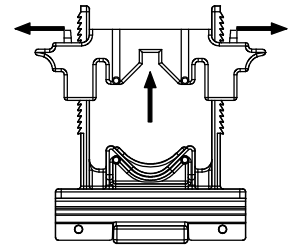
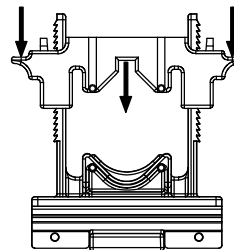
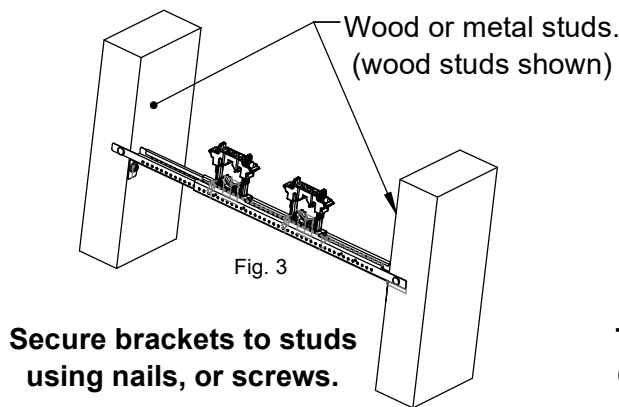
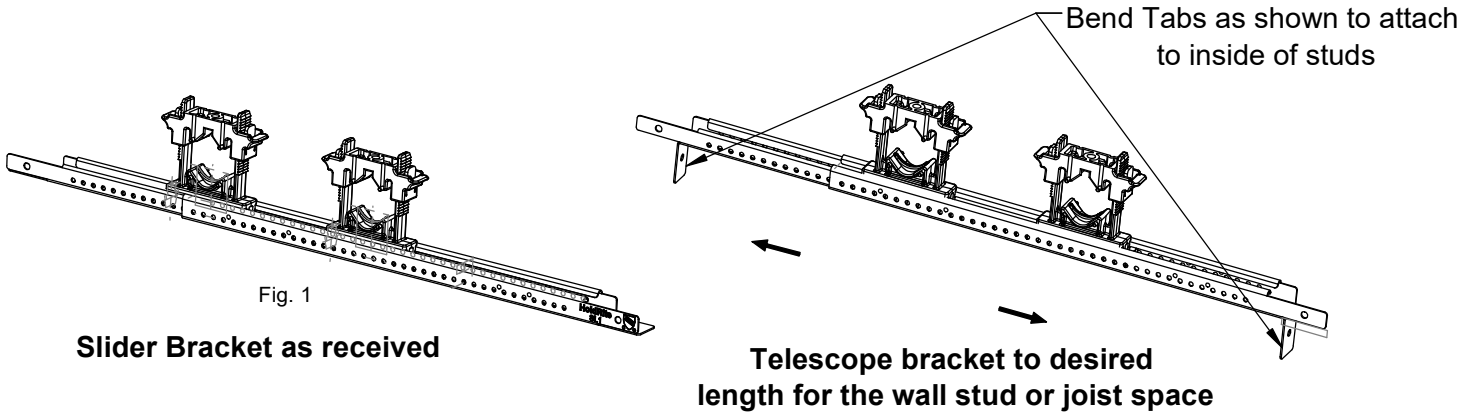


INSTALLATION INSTRUCTIONS, SL Series

Slider Bracket Between Studs Installation



Model #	Description	Stud Bay Spacing	Number of Clamps
SL1-1	253 Clamp & Galvanized Steel Telescoping Bracket	10" to 16"	1
SL1-2	253 Clamps & Galvanized Steel Telescoping Bracket	10" to 16"	2
SL2-1	253 Clamp & Galvanized Steel Telescoping Bracket	13" to 24"	1
SL2-2	253 Clamps & Galvanized Steel Telescoping Bracket	13" to 24"	2

WARNING:

- The buyer and/or installer is responsible for:
 - Application in conformance to local codes.
 - The integrity of structures to which the fasteners is attached, including their capability of safely accepting the load imposed, as evaluated by a qualified engineer. (Product load ratings are shown on the Product's Specification Sheet at WWW.HOLDRITE.COM)
- Failure to observe these Instructions may lead to unsatisfactory product performance, which can result in property damage or bodily injury.

SAFETY INSTRUCTIONS: All safety regulations required by the job site must be observed. Special attention should be given to the following instructions. While working on a job site:

- Wear safety glasses with side shields
- Wear gloves to avoid splinters and cuts.
- Be sure power tools are properly grounded.

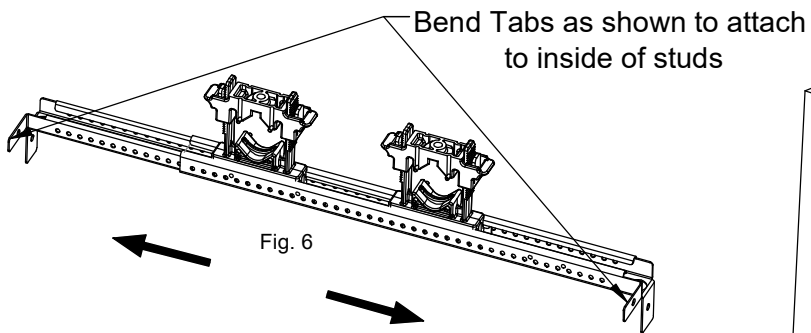


HoldRite™

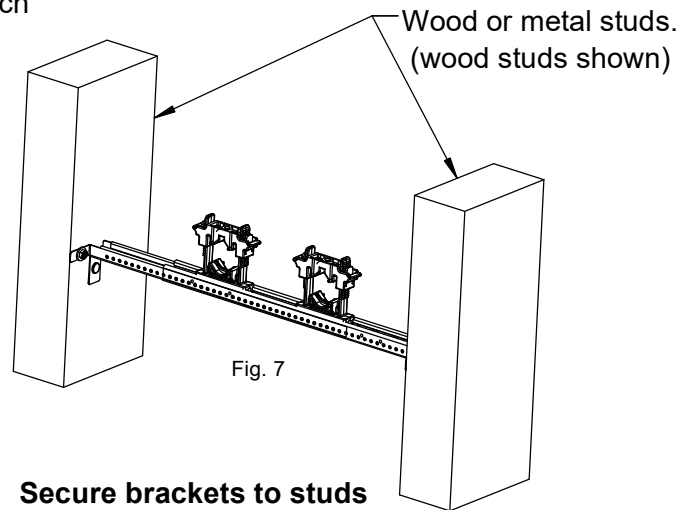
877-700-4242 / FAX: 877-700-4280
WWW.HOLDRITE.COM
 Rev .1 (SL1-1, SL1-2, SL2-1, SL2-2 & 253)

INSTALLATION INSTRUCTIONS, SL Series

Slider Bracket Between Studs Installation



Telescope bracket to desired length for wall stud or joist space



Secure brackets to studs using nails, or screws.

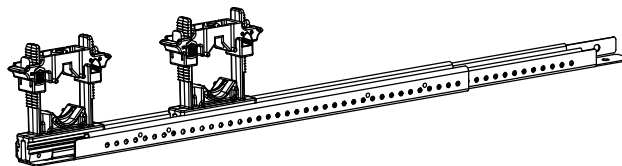


Fig. 8

To add or remove Slider Clamps,
slide the Clamp on or off either end of the Slider Bracket



HoldRite™

877-700-4242 / FAX: 877-700-4280
WWW.HOLDRITE.COM
Rev .1 (SL1-1, SL1-2, SL2-1, SL2-2 & 253)