

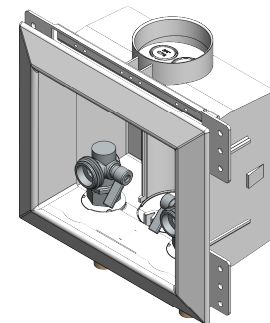
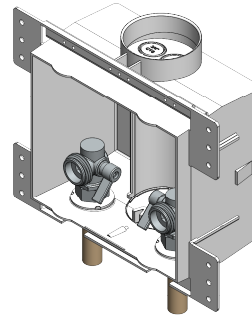
Product Submittal	
Name	
Date	
Architect/Owner	
Contractor	
Tag	
Notes	

## HoldRite™ HR-W Series Washing Machine Outlet Box Product Specification

HoldRite Washing Machine Outlet Boxes are designed for use in residential laundry spaces and allow for installation of water supply valves during the rough-in phase. Can be mounted for top or bottom supplied water lines and installed directly to a stud via flange holes or between studs using a HYCO bar or HoldRite 170. Outlet Box Assemblies include Hot and Cold supply valves with quarter-turn handles and 3/4" male threaded hose connections. Can be used with Copper, PEX, or CPVC. 2" drain socket and 3/4" IPS and CTS knockouts on top/bottom of box for connection of condensate/T&P drain lines. Face plate included. Optional integral water hammer arrestors for water shock wave prevention available. Drain funnel and other accessories sold separately. Fire-rated version available.

### Materials

- Box: ABS
- Valve Body: DZR LF Brass
- Valve Ball: DZR LF Brass
- Handle: Aluminum
- Arrestor: Stainless Steel, DZR LF Brass
- Face Plate: ABS (paintable)
- Drain Funnel: ABS



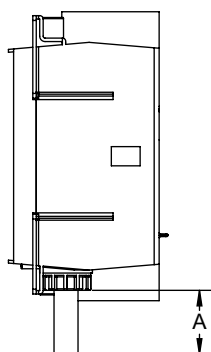
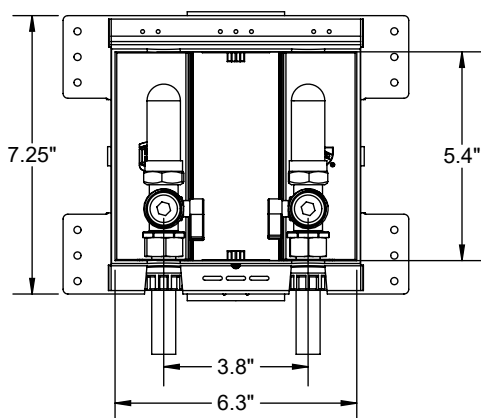
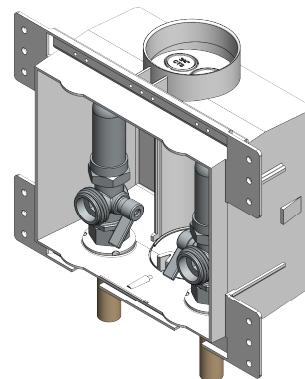
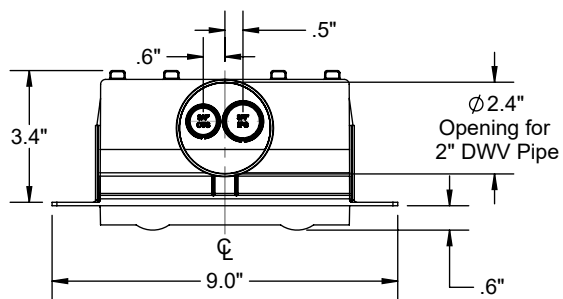
### Valve Performance

- Maximum working temperature: 160 °F
- Maximum working pressure: 125 PSI

### Codes and Listings

- Box: IAPMO PS54
- Valves: ASME A112.18.1/CSA125.1, NSF/ANSI 14, NSF/ANSI/CAN 61, NSF/ANSI/CAN 372
- Arrestors: ASSE1010
- PEX-A Tubing: ASTM F876, ASTM F877, CSA B137.5
- Copper Type L Tubing: ASTM B88
- CPVC Tubing: ASTM D2486

## Dimensions



TUBING	A
PEX-A	1.60" Min.
CPVC	1.80" Min.
Copper Type L	2.60" Min.

