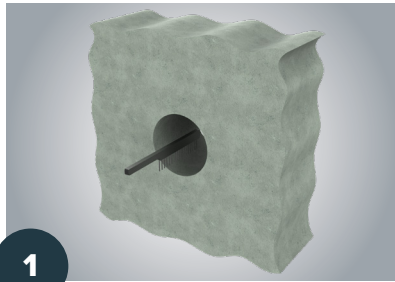


Installation Instructions

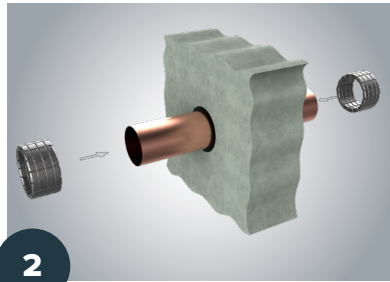
HoldRite® HydroFlame™ 50

WALL INSTALLATION



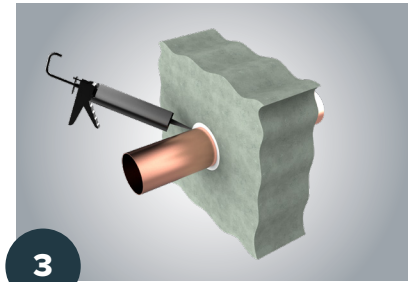
1

Clean opening.



2

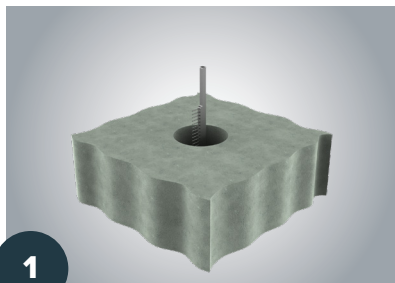
Install pipes or cables. Install backing material as required into annular space as shown to both sides of wall assembly.



3

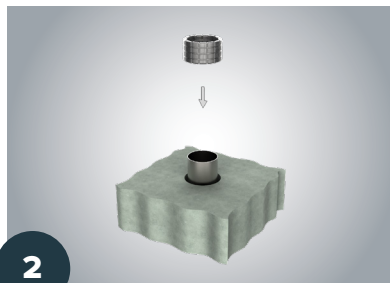
Apply caulking as required to close remaining gap to both sides of wall assembly; providing a smoke and gas resistant seal. Spread caulking smoothly and evenly all around.

FLOOR INSTALLATION



1

Clean opening.



2

Install pipes or cables. Install backing material as required into annular space as shown to both sides of floor assembly.



3

Apply caulking as required to close remaining gap to both sides of floor assembly; providing a smoke and gas resistant seal. Spread caulking smoothly and evenly all around.

