

# THROUGH-PENETRATION FIRESTOP SYSTEM

[Assembly Usage Disclaimer](#)

## Search Parameters

Manufacturer

Holdrite

## XHEZ - Through-penetration Firestop Systems

[See General Information for Through-penetration Firestop Systems](#)

### System No. W-L-2703

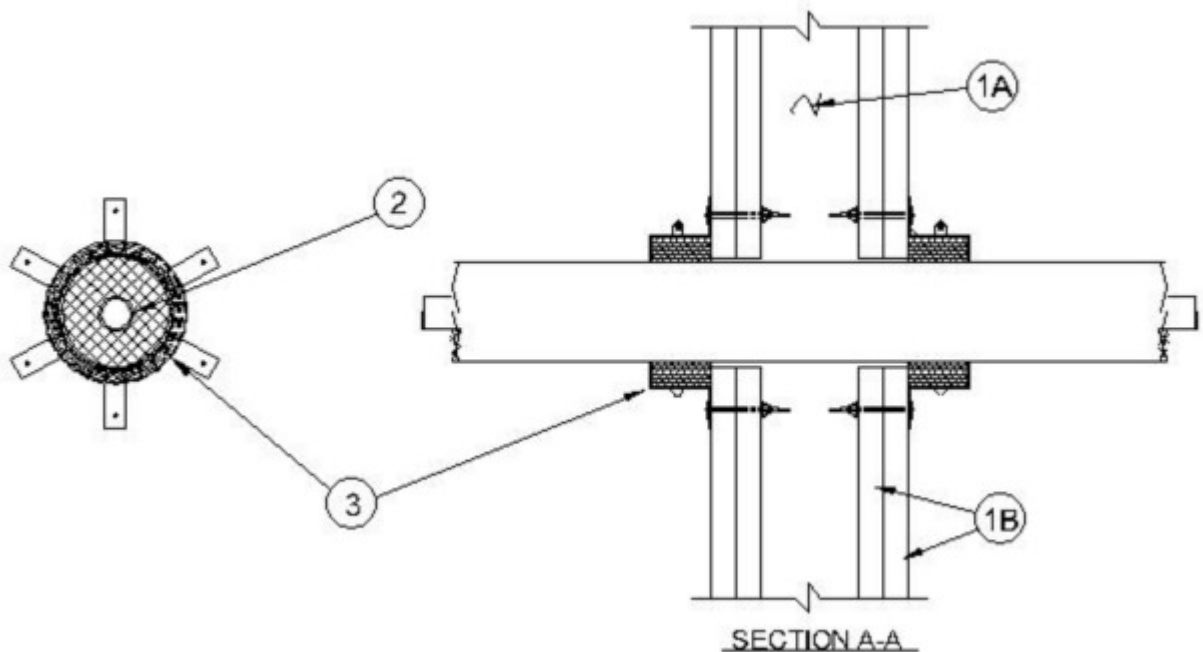
January 09, 2019

**F Rating —1 or 2 Hr (See Item 1)**

**T Rating —0 or 2 Hr (See Item 1)**

**L Rating at Ambient - less than 1 CFM/ft<sup>3</sup> (See Item 3B)**

**L Rating At 400°F - Less than 1 CFM/ft<sup>3</sup> (See Item 3B)**



1. **Wall Assembly** — The 1 or 2 hr fire-rated gypsum board/stud wall assembly shall be constructed of the materials and in the manner specified in the individual U300, U400 or V400 Series Wall and Partition Designs in the UL Fire Resistance Directory and shall include the following construction features:

A. **Studs** — Wall framing shall consist of either wood or steel channel studs. Wood studs to consist of nom 2 by 4 in. (51 by 102 mm) lumber spaced 16 in. (406 mm) OC. Steel studs to be min 2-1/2 in. (64 mm) wide and spaced max 24 in. (610 mm) OC.

B. **Gypsum Board\*** — Min 5/8 in. (16 mm) thick. The gypsum board type, thickness, number of layers and orientation shall be as specified in the individual U300, U400 or V400 Wall and Partition Design. Max diam of opening is 2 in. (51 mm).

**The hourly F Rating of the firestop system is equal to the hourly fire rating of the wall assembly in which it is installed. The hourly T rating is 0 or 2 for 1 or 2 hour rated constructions, respectively.**

2. **Through Penetrant** — One nonmetallic pipe, or tube to be installed eccentrically or concentrically within the firestop system. Annular space to be min 1/4 in. (6 mm) to max 3/8 in. (10 mm). Pipe or tube to be rigidly supported on both sides of the wall assembly. The following types and sizes of nonmetallic pipes and tubes may be used:

A. **Crosslinked polyethylene (PEX) Tubing** — Nom 3/4 in. (19 mm) diam (or smaller) UPONOR - WIRSBO AQUAPEX pre insulated crosslinked polyethylene (PEX) pipe for use in closed (process or supply) or vented (drain, waste or vent) piping systems. Pipe insulation is crosslinked closed cell foam with a nominal thickness of 1/2 in. (13 mm) (or smaller).

**B. Crosslinked polyethylene (PEX) Tubing** — Nom 3/4 in. (19 mm) diam (or smaller) UPONOR - WIRSBO AQUAPEX plus Red or Blue pre insulated crosslinked polyethylene (PEX) pipe for use in closed (process or supply) or vented (drain, waste or vent) piping systems. Pipe insulation is crosslinked closed cell foam with a nominal thickness of 1/2 in. (13 mm) (or smaller).

**C. Crosslinked polyethylene (PEX) Tubing** — Nom 3/4 in. (19 mm) diam (or smaller) UPONOR - WIRSBO hePEX plus pre insulated crosslinked polyethylene (PEX) pipe for use in closed (process or supply) or vented (drain, waste or vent) piping systems. Pipe insulation is crosslinked closed cell foam with a nominal thickness of 1/2 in. (13 mm) (or smaller).

**D. Crosslinked polyethylene (PEX) Tubing** — Nom 3/4 in. (19 mm) diam (or smaller) UPONOR - Pre sleeved WIRSBO AQUAPEX, AQUAPEX plus, or hePEX plus pre insulated crosslinked polyethylene (PEX) pipe for use in closed (process or supply) or vented (drain, waste or vent) piping systems. Pipe sleeve is a corrugated plastic sleeve between the tube and the insulation. Pipe insulation is crosslinked closed cell foam with a nominal thickness of 1/2 in. (13 mm) (or smaller).

**3. Firestop System** — The firestop system shall consist of the following:

**A. Firestop Device\*** — Galv steel collar lined with an intumescent material sized to fit specific diam of the through penetrant. Device to be installed around through penetrant in accordance with accompanying installation instructions. Device incorporates anchor tabs for securement to both surfaces of the wall by means of 1/8 in. diam by 2-1/2 in. (3.2 by 64 mm) long steel hollow wall anchors.

**RELIANCE WORLDWIDE CORPORATION DBA HOLDRITE HYDROFLAME** — HydroFlame Pipe Collar

**B. Fill void Cavity material\* -Sealant** — (Optional — Not Shown) Min 1/2 in. (13 mm) thickness of fill material applied within the annulus, flush with both surfaces of wall.

**RELIANCE WORLDWIDE CORPORATION DBA HOLDRITE HYDROFLAME** — HydroFlame 200, HydroFlame 100

**The L Rating only applies when Item 3B is used.**

**\* Indicates such products shall bear the UL or cUL Certification Mark for jurisdictions employing the UL or cUL Certification (such as Canada), respectively.**

## Design/System/Construction/Assembly Usage Disclaimer

- Authorities Having Jurisdiction should be consulted in all cases as to the particular requirements covering the installation and use of UL Certified products, equipment, system, devices, and materials.
- Authorities Having Jurisdiction should be consulted before construction.
- Fire resistance assemblies and products are developed by the design submitter and have been investigated by UL for compliance with applicable requirements. The published information cannot always address every construction nuance encountered in the field.
- When field issues arise, it is recommended the first contact for assistance be the technical service staff provided by the product manufacturer noted for the design. Users of fire resistance assemblies are advised to consult the general Guide Information for each product category and each group of assemblies. The Guide Information includes specifics concerning alternate materials and alternate methods of construction.
- Only products which bear UL's Mark are considered Certified.

---

The appearance of a company's name or product in this database does not in itself assure that products so identified have been manufactured under UL's Follow-Up Service. Only those products bearing the UL Mark should be considered to be Certified and covered under UL's Follow-Up Service. Always look for the Mark on the product.

UL permits the reproduction of the material contained in the Online Certification Directory subject to the following conditions: 1. The Guide Information, Assemblies, Constructions, Designs, Systems, and/or Certifications (files) must be presented in their entirety and in a non-misleading manner, without any manipulation of the data (or drawings). 2. The statement "Reprinted from the Online Certifications Directory with permission from UL" must appear adjacent to the extracted material. In addition, the reprinted material must include a copyright notice in the following format: "© 2019 UL LLC".