

THROUGH-PENETRATION FIRESTOP SYSTEM

Assembly Usage Disclaimer

Search Parameters

Manufacturer

Holdrite

XHEZ - Through-penetration Firestop Systems

XHEZ7 - Through-penetration Firestop Systems Certified for Canada

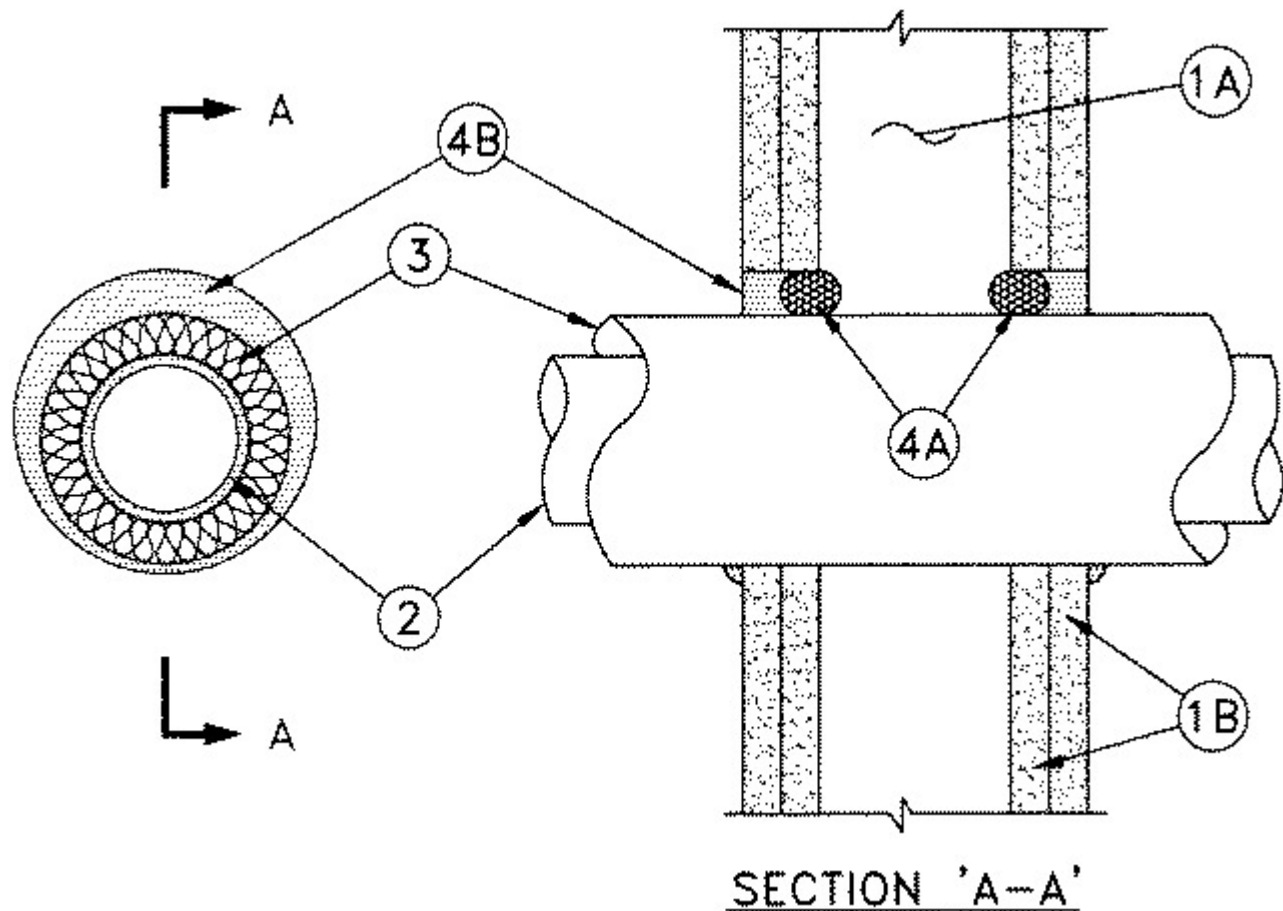
See General Information for Through-penetration Firestop Systems

See General Information for Through-penetration Firestop Systems Certified for Canada

System No. W-L-5357

February 12, 2019

ANSI/UL1479 (ASTM E814)	CAN/ULC S115
F Ratings— 1 and 2 Hr (See Item 4B)	F Ratings — 1 and 2 Hr (See Item 4B)
T Ratings — 0, 3/4, 1 and 1-1/2 Hr (See Item 4B)	FT Ratings — 0, 3/4, 1 and 1-1/2 Hr (See Item 4B)
L Rating At Ambient — Less Than 1 CFM/sq ft	FH Ratings — 1 and 2 Hr (See Item 4B)
L Rating At 400°F — Less Than 1 CFM/sq ft	FTH Ratings — 0, 3/4, 1 and 1-1/2 Hr (See Item 4B)
	L Rating At Ambient — Less Than 1 CFM/sq ft
	L Rating At 400°F — Less Than 1 CFM/sq ft



1. **Wall Assembly** — The 1 or 2 hr fire-rated gypsum board/stud wall assembly shall be constructed of the materials and in the manner described in the individual U300, U400 or V400 Series Wall and Partition Designs in the UL Fire Resistance Directory and shall include the following construction features:

A. **Studs** — Wall framing shall consist of either wood studs or steel channel studs. Wood studs to consist of nom 2 by 4 in. (51 by 102 mm) lumber spaced 16 in. (406 mm) OC. Steel studs to be min 3-5/8 in. (92 mm) wide and spaced 24 in. (610 mm) OC.

B. **Gypsum Board*** — 5/8 in. (16 mm) thick, 4 ft (1.22 m) wide with square or tapered edges. The gypsum board type, thickness, number of layers, fastener type and sheet orientation shall be as specified in the individual U300, U400 or V400 Series Designs in the UL Fire Resistance Directory. Max diam of opening in wood stud walls is 14-1/2 in. (368 mm) Max diam of opening in steel stud walls is 18-5/16 in. (465 mm). The inside diam of the opening shall be min 1 in. (25 mm) to max 3 in. (76 mm) larger than the outside diam of pipe covering (see Item 3).

2. **Through Penetrants** — One metallic pipe or tube installed concentrically or eccentrically within the firestop system. Pipe or tube to be rigidly supported on both sides of the wall. The following types and sizes of through penetrants may be used:

A. **Steel Pipe** — Nom 12 in. (305 mm) diam (or smaller) Schedule 30 (or heavier) steel pipe.

B. **Iron Pipe** — Nom 12 in. (305 mm) diam (or smaller) cast or ductile iron pipe.

C. **Copper Tubing** — Nom 6 in. (152 mm) diam (or smaller) Type L (or heavier) copper tubing.

D. **Copper Pipe** — Nom 6 in. diam (152 mm) (or smaller) Regular (or heavier) copper pipe.

The type and max nom diam of the through penetrant is dependent upon the rating of the wall assembly, and the type of fill material as shown in Item 4B.

3. **Pipe Covering*** — One of the following types of pipe coverings shall be used:

A. **Pipe and Equipment Covering Materials*** — Nom 2 in. (51 mm) thick hollow cylindrical heavy density (min 3.5 pcf or 56 kg/m³) glass fiber units jacketed on the outside with an all service jacket. Longitudinal joints sealed with metal fasteners or factory-applied self-sealing lap tape. Transverse joints secured with metal fasteners or butt tape supplied with the product. The annular space between the insulated through penetrant and the periphery of the opening shall be min 0 in. (0 mm, point contact) to max 1-9/16 in. (40 mm)

See **Pipe and Equipment Covering Materials*** (BRGU) category in the Building Materials Directory for names of manufacturers. Any pipe covering material meeting the above specifications and bearing the UL Classification Marking with a Flame Spread Index of 25 or less and a Smoke Developed Index of 50 or less may be used.

B. **Pipe and Equipment Covering Materials*** — Nom 2 in. (51 mm) thick unfaced mineral fiber pipe insulation having a nom density of 3.5 pcf (56 kg/m³ or heavier) and sized to the outside diam of the pipe or tube. Pipe insulation secured with min 18 AWG steel wire spaced 12 in. (305 mm) OC. The annular space between insulated penetrating item and the periphery of the through opening shall be min 0 in. (0 mm, point contact) to max 1-9/16 in. (40 mm).

C. **Sheathing Material*** — Used in conjunction with Item 3B. Foil-scrim-kraft or all service jacket material shall be wrapped around the outer circumference of the pipe insulation (Item 3B) with the kraft side exposed. Longitudinal and transverse joints sealed with metal fasteners or butt tape.

See **Sheathing Materials*** (BVDV) category in the Building Materials Directory for names of manufacturers. Any sheathing material meeting the above specifications and bearing the UL Classification Marking with a Flame Spread Index of 25 or less and a Smoke Developed Index of 50 or less may be used.

4. **Firestop System** — The firestop system shall consist of the following:

A. **Packing Material** — Nom 1 in. (25 mm) foam backer rod firmly packed into the opening as a permanent form in 2 hr fire-rated assemblies to prevent leakage of fill material during installation. Packing material to be recessed from both surfaces of wall as required to accommodate the required thickness of fill material.

B. **Fill, Void or Cavity Material*** — Sealant Min 5/8 in. (16 mm) thickness of fill material applied within annulus, flush with each surface of wall. At point contact location, a min 3/8 in. (10 mm) bead of fill material shall be applied to the wall/pipe covering interface on both surfaces of the wall.

The F and T Ratings of the firestop system are dependent upon the hourly rating of the wall assembly, max nom diam and type of the through penetrant and type of fill material as shown in the table below:

Rating of Wall, Hr	Type of Through Penetrant	Max Nom Diam of Through Penetrant, In. (mm)	Type of Fill Material	F and FH Ratings, Hr	T, FT and FTH Rating, Hr
2	Copper Tube, Copper Pipe, Steel Pipe, or Iron Pipe	4 (102)	HydroFlame 200	2	1-1/2
1	Copper Tube, Copper Pipe, Steel Pipe, or Iron Pipe	4 (102)	HydroFlame 200	1	1
2	Copper Tube, Copper Pipe, Steel Pipe, or Iron Pipe	6 (152)	HydroFlame 100	2	1
1	Copper Tube, Copper	6 (152)	HydroFlame 100	1	0

	Pipe, Steel Pipe, or Iron Pipe				
2	Steel Pipe, or Iron Pipe	12 (152)	HydroFlame 100	2	1-1/2
1	Steel Pipe, or Iron Pipe	12 (152)	HydroFlame 100	1	3/4

**RELIANCE WORLDWIDE CORPORATION DBA HOLDRITE
HYDROFLAME — HydroFlame 100, HydroFlame 200**

*** Indicates such products shall bear the UL or cUL Certification Mark for jurisdictions employing the UL or cUL Certification (such as Canada), respectively.**

Last Updated on 2019-02-12

Design/System/Construction/Assembly Usage Disclaimer

- Authorities Having Jurisdiction should be consulted in all cases as to the particular requirements covering the installation and use of UL Certified products, equipment, system, devices, and materials.
- Authorities Having Jurisdiction should be consulted before construction.
- Fire resistance assemblies and products are developed by the design submitter and have been investigated by UL for compliance with applicable requirements. The published information cannot always address every construction nuance encountered in the field.
- When field issues arise, it is recommended the first contact for assistance be the technical service staff provided by the product manufacturer noted for the design. Users of fire resistance assemblies are advised to consult the general Guide Information for each product category and each group of assemblies. The Guide Information includes specifics concerning alternate materials and alternate methods of construction.
- Only products which bear UL's Mark are considered Certified.

The appearance of a company's name or product in this database does not in itself assure that products so identified have been manufactured under UL's Follow-Up Service. Only those products bearing the UL Mark should be considered to be Certified and covered under UL's Follow-Up Service. Always look for the Mark on the product.

UL permits the reproduction of the material contained in the Online Certification Directory subject to the following conditions: 1. The Guide Information, Assemblies, Constructions, Designs, Systems, and/or Certifications (files) must be presented in their entirety and in a non-misleading manner, without any manipulation of the data (or drawings). 2. The statement "Reprinted from the Online

Certifications Directory with permission from UL" must appear adjacent to the extracted material. In addition, the reprinted material must include a copyright notice in the following format: "© 2019 UL LLC".

UL and the UL logo are trademarks of UL LLC © 2019 All Rights Reserved.