

System No. F-A-0026 XHEZ.F-A-0026 Through-penetration Firestop Systems

[Page Bottom](#)

Design/System/Construction/Assembly Usage Disclaimer

- Authorities Having Jurisdiction should be consulted in all cases as to the particular requirements covering the installation and use of UL Certified products, equipment, system, devices, and materials.
- Authorities Having Jurisdiction should be consulted before construction.
- Fire resistance assemblies and products are developed by the design submitter and have been investigated by UL for compliance with applicable requirements. The published information cannot always address every construction nuance encountered in the field.
- When field issues arise, it is recommended the first contact for assistance be the technical service staff provided by the product manufacturer noted for the design. Users of fire resistance assemblies are advised to consult the general Guide Information for each product category and each group of assemblies. The Guide Information includes specifics concerning alternate materials and alternate methods of construction.
- Only products which bear UL's Mark are considered Certified.

XHEZ - Through-penetration Firestop Systems

XHEZ7 - Through-penetration Firestop Systems Certified for Canada

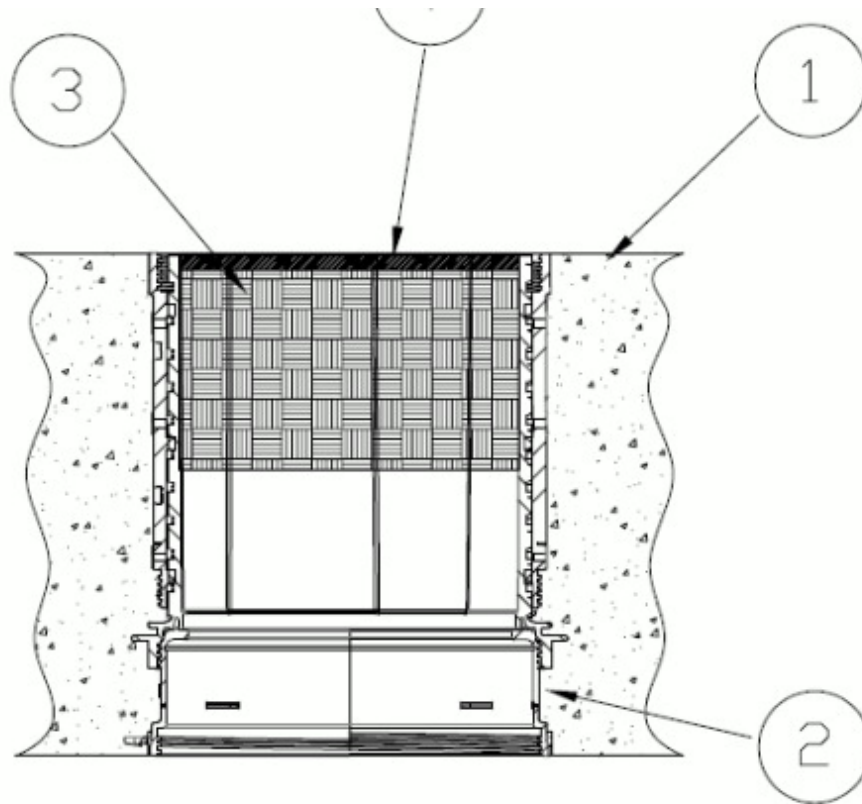
[See General Information for Through-penetration Firestop Systems](#)

[See General Information for Through-penetration Firestop Systems Certified for Canada](#)

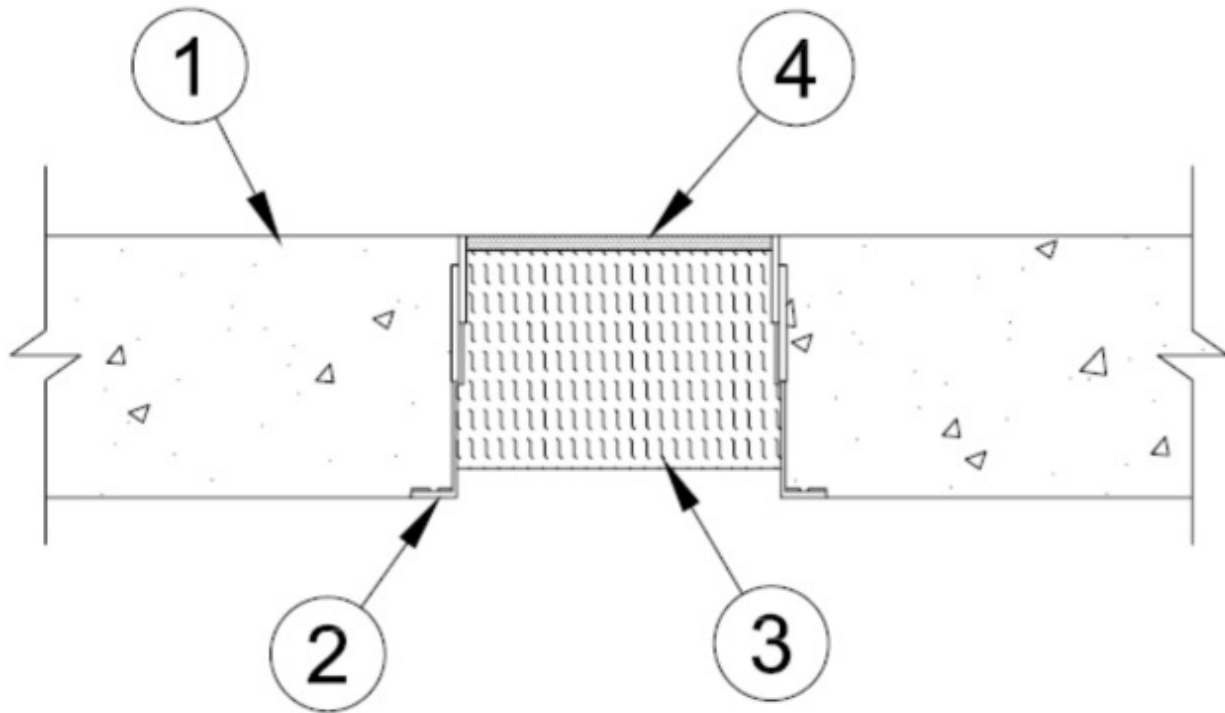
System No. F-A-0026

September 12, 2016

ANSI/UL1479 (ASTM E814)	CAN/ULC S115
F Rating — 2 Hr	F Rating — 2 Hr
T Rating — 2 Hr	FT Rating — 2 Hr
L Rating At Ambient — Less Than 1 CFM/sq ft	FH Rating — 2 Hr
L Rating At 400 F — 2 CFM/sq ft	FTH Rating — 2 Hr
W Rating — Class 1	L Rating At Ambient — Less Than 5.1 L/s/m ³
	L Rating At 400 F — 10.2 L/s/m ³



Configuration A



Configuration B

System tested with a pressure differential of 2.5 Pa between the exposed and the unexposed surfaces with the higher pressure on the exposed side.

- 1. **Floor Assembly** — Min 4-1/2 in. (114 mm) thick reinforced lightweight or normal weight (100-150 pcf or 1600-2400 kg/m³) concrete.

A. **Concrete** — Min 4-1/2 in. (114 mm) thick reinforced lightweight or normal weight (100-150 pcf or 1600-2400 kg/m³) concrete, as measured from the top plane of the steel floor units.

B. **Steel Floor and Form Units*** — Composite or non-composite max 3 in. (76 mm) deep galv steel fluted units as specified in the individual Floor-Ceiling Design.

2. **Firestop Device*** — Max 6 in. (152 mm) cast in place firestop device permanently embedded during concrete placement in accordance with accompanying installation instructions. The device shall be installed flush with top and bottom surfaces of floor. For HFP devices the optional accessory (not shown) includes a sleeve extension and / or deck adapter installed in accordance with installation instructions. The devices are sized to accommodate the following nom pipe sizes:

Nom Pipe Diam in. (mm)	Conf A Firestop Devices for Concrete Slab	Conf A Firestop Devices for Fluted Deck (Not Shown)	Conf B Firestop Devices for Concrete Slab	Conf B Firestop Devices for Fluted Deck (Not Shown)
1/2 to 1 (13 to 25) HFP-H Size Below 1/4 to 1-1/4 (6 to 32)	HFP-M1, HFP-P1, HFP-H2, HFP-P1B, HFP-M1B, HFP-H2B	add HFPCD1	WD sleeve	CD sleeve
1-1/4 to 2 (32 to 51) HFP-H Size Below 1 to 2 (25 to 51)	HFP-P2, HFP-M2, HFP-H3, HFP-P2B, HFP-M2B, HFP-H3B	add HFPCD2	WD sleeve	CD sleeve
2 to 3 (51 to 76) HFP-H Size Below 1-1/4 to 3 (32 to 76)	HFP-P3, HFP-M3, HFP-H4, HFP-P3B, HFP-M3B, HFP-H4B	add HFPCD3	WD sleeve	CD sleeve
3 to 4 (76 to 102) HFP-H Size Below 2-1/2 to 4 (64 to 102)	HFP-P4, HFP-M4, HFP-H5, HFP-P4B, HFP-M4B, HFP-H5B	add HFPCD4	WD sleeve	CD sleeve
5 to 6 (127 to 152) HFP-H Size Below 4 to 6 (102 to 152)	HFP-P6, HFP-M6, HFP-H7, HFP-P6B, HFP-M6B, HFP-H7B	add HFPCD6	WD sleeve	CD sleeve

SECURUS INC, DBA HOLDRITE — (Configuration A) HFP-Mx, HFP-Px, HFP-Hx, HFP-PxB, HFP-MxB, HFP-HxB, (Configuration B) HydroFlame WD Sleeve, CD Sleeve

When HydroFlame WD 0600 Sleeve is used, the nominal 1 by 0.3 in. (25 by 7.6 mm) void created by the stepped base within the sleeve shall be tightly-packed with mineral wool batt insulation (Item 4) during firestop installation if concrete floor assembly is less than 7 in. (178 mm) thick.

3. **Packing Material** — Min 3-3/4 in. (95 mm) thickness of min 4 pcf (64 kg/m³) mineral wool batt insulation firmly packed into firestop device as a permanent form so that the width of the wool is compressed at least 50 percent. Packing material to be recessed from top surface of floor as required to accommodate the required thickness of fill material.

4. **Fill, Void or Cavity Material* — Sealant** — Min 1/4 in. (6 mm) thickness of sealant applied within the annulus, flush with the top surface of floor. Conf B, Sealant must lap onto top surface of concrete floor around entire perimeter of firestop device to attain W Rating.

3M COMPANY 3M FIRE PROTECTION PRODUCTS — FB-1000 NS or FB-1003SL

RECTORSEAL — Metacaulk 835+, Biotherm 100 or 200

Last Updated on 2016-09-12

[Questions?](#)

[Print this page](#)

[Terms of Use](#)

[Page Top](#)

© 2016 UL LLC

The appearance of a company's name or product in this database does not in itself assure that products so identified have been manufactured under UL's Follow-Up Service. Only those products bearing the UL Mark should be considered to be Certified and covered under UL's Follow-Up Service. Always look for the Mark on the product.

UL permits the reproduction of the material contained in the Online Certification Directory subject to the following conditions: 1. The Guide Information, Assemblies, Constructions, Designs, Systems, and/or Certifications (files) must be presented in their entirety and in a non-misleading manner, without any manipulation of the data (or drawings). 2. The statement "Reprinted from the Online Certifications Directory with permission from UL" must appear adjacent to the extracted material. In addition, the reprinted material must include a copyright notice in the following format: "© 2016 UL LLC".